

SURVEY & REMONUMENTATION

MAR 03 1998

SECTION

LAND CORNER RECORDATION CERTIFICATE
Filing Requirement of Act 74, Mich. P.A. 1970
KENT COUNTY REMONUMENTATION

\$7.00
\$2.00

For corners in

Kent
(County)

Located in: Cannon Township

Corner Code #

| | | | |
|------------------------------------|-------------|--------------|-------------|
| 1. Public Land Survey | T <u>8N</u> | R <u>10W</u> | <u>D-12</u> |
| | T | R | |
| | T | R | |
| | T | R | |
| 2. Property Controlling in Section | S | T | R |
| | S | T | R |
| 3. Miscellaneous Property in Sec. | S | T | R |
| | S | T | R |

4. Lot No. _____, Recorded Plat _____
 5. Private Claims _____

97 DEC 15 AM 10:43
 REGISTERED FOR RECORD
 STATE OF MICHIGAN
 COUNTY OF KENT
 REGISTER OF DEEDS
 10394

Register of Deeds Stamp & File Number

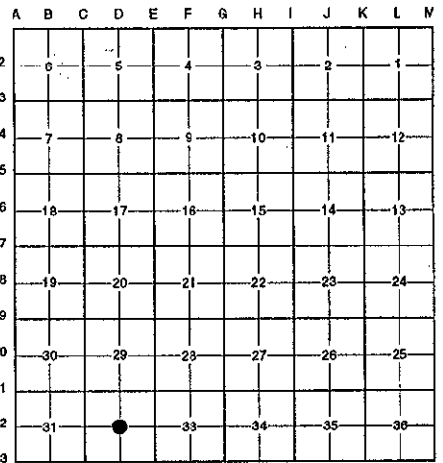
I, Randy Kolehouse, in a field survey on October 10 19 97, do hereby certify that under requirements of P.A. 74 Michigan P.A. of 1970, the corner points mentioned in lines 1 and 2 above were in conformance with regulations and rules therefore as required in the current manual of survey instructions of the United States Department of the interior, Bureau of Land Management or by a decree of a Court of Law and/or that the corner points mentioned in lines 3, 4 and 5 above were in conformance with the rules of the Michigan Board of Land Surveyors or by a Decree of a Court of Law; established, re-established, monumented, re-monumented, recovered, found as expressed below:

NOTE: Not more than 4 corners, all in the same town and range, may be recorded on this certificate.

A. Description of original monument and accessories and/or subsequent restoration:

D-12 This corner was not originally set by the G.L.O.

N/A Witness Map K.C. Surveyor Iron
 1972 L.C.R.C. #450 Medema, Van Kooten & Assoc. "T" Iron



B. Description of corner evidence found and/or method applied in restoring or reestablishing corner:

D-12 Found an unrecorded Standard Kent County Monument 2.5' West of a fence line running North and South, .50' ± South of a fence line running West, and 3' North of a fence line running East. Monument is 0.5' North and 6.4' West of the intersection of 1/4 lines which checked L.C.R.C. #450 and the K.C. Surveyor's records. Accepted monument as Center of Section.

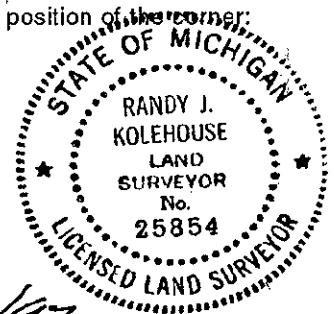
K.C. Witness Map L.C.R.C. 450
 12" Hick N 8.25' 20" Oak SW 17.73' (m. 17.70')
 48" Oak E 19.20' 40" Oak E 19.16' (m. 19.21')
 18" Oak (Hickory) N 8.24'

The selected location is accepted by me and is generally accepted by professional surveyors as the best available evidence of the position of the original corner.

C. Description of monument for corner and accessories established to perpetuate locating the position of the corner:

D-12 Standard Kent County Monument

- Nail & K.C. remon. tag on N side 48" Oak East 19.21'
- Nail & K.C. remon. tag on W side 20" Hickory North 8.97'
- Nail & K.C. remon. tag on N side 10" Maple S 40° W 17.70'
- Nail & K.C. remon. tag on E side 8" Maple S 15° W 17.70'
- Nail & K.C. remon. tag on S side 18" Oak North 8.24'
- Sq. spike in SE side 20" Oak (dead) S 20° W 17.73'



Signed by Randy J. Kolehouse Date 11/24/97
 EARTH TECH

Surveyor's Michigan License No. 25854