

**SURVEY & REMONUMENTATION**

MAR 03 1998

**SECTION**

**LAND CORNER RECORDATION CERTIFICATE**  
**Filing Requirement of Act 74, Mich. P.A. 1970**  
**KENT COUNTY REMONUMENTATION**

For corners in

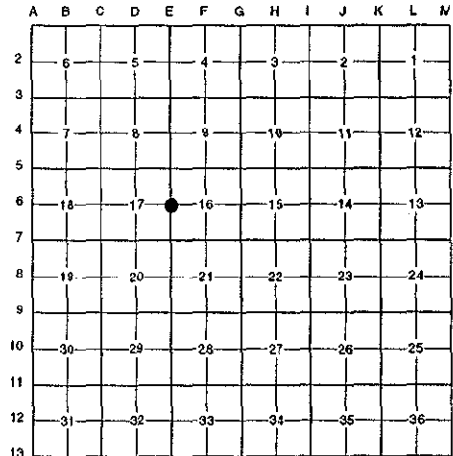
Kent (County)	Located in: Cannon Township	Corner Code #
1. Public Land Survey	T <u>8N</u> R <u>10W</u>	<u>E-6</u>
	T _____ R _____	_____
	T _____ R _____	_____
	T _____ R _____	_____
2. Property Controlling in Section	S _____ T _____ R _____	_____
	S _____ T _____ R _____	_____
3. Miscellaneous Property in Sec.	S _____ T _____ R _____	_____
	S _____ T _____ R _____	_____
4. Lot No. _____, Recorded Plat _____		
5. Private Claims _____		

STATE OF MICHIGAN  
 COUNTY OF KENT  
 RECEIVED FOR RECORD  
 97 OCT 15 AM 8:45  
 REG. OF DEEDS  
*Lucy St. Paul*

**10100**

Register of Deeds Stamp & File Number

I, Randy Kolehouse, in a field survey on June 11 19 97, do hereby certify that under requirements of P.A. 74 Michigan P.A. of 1970, the corner points mentioned in lines 1 and 2 above were in conformance with regulations and rules therefore as required in the current manual of survey instructions of the United States Department of the Interior, Bureau of Land Management or by a decree of a Court of Law and/or that the corner points mentioned in lines 3, 4 and 5 above were in conformance with the rules of the Michigan Board of Land Surveyors or by a Decree of a Court of Law; established, re-established, monumented, re-monumented, recovered, found as expressed below:



**NOTE: Not more than 4 corners, all in the same town and range, may be recorded on this certificate.**

A. Description of original monument and accessories and/or subsequent restoration:

E-6	1831	G.L.O. Notes	Mullett	Set Post
	N/A	Witness Map	K.C. Surveyor	Iron
	1972	L.C.R.C. #395	Williams & Works	"T" Iron
	1981	L.C.R.C. #2370	Jonker Land Surveys	Fnd. "T" Iron / Set K.C. Monument
	1991	L.C.R.C. #6295	Chris Marschall	K.C. Monument

P.A. 345 1990 KENT COUNTY  
 PEER APPROVED 6/26/97  
 CHAIRMAN Randy Kolehouse  
 K.C. Monument

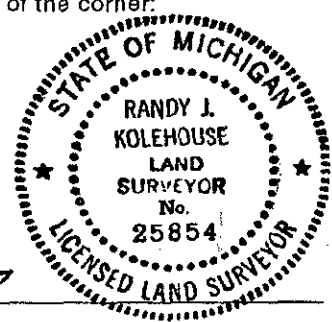
This corner was originally approved by the Kent County Remonumentation Peer Group and monumented by Rob Jonker on 11/11/81 and was recorded per L.C.R.C. #2370.

B. Description of corner evidence found and/or method applied in restoring or reestablishing corner:  
 E-6 Found a Standard Kent County Monument 3' East of the C/L of Egypt Valley Avenue (bit.) running North and South per L.C.R.C.'s #2370 and #6295 as set by Rob Jonker in place of a "T" iron he found which checked L.C.R.C. #395 and the K.C. Surveyor's records.

L.C.R.C. #2370	L.C.R.C. #6295
Remon. tag on N side 16" Oak N88°W 62.50'	Nail & Tag SW sd. 48" Oak (4' above grd.) N 60° W 46.61'
Remon. tag on SW side 42" Oak N60°W 46.62'	Nail & Tag N sd. 22" Oak (5' above grd.) N 88° W 62.48'
Remon. tag on W side 10" Oak S11°E 108.90'	Nail & Tag NW sd. 14" Oak N 38° E 63.07'
Remon. tag on NW side 12" Oak N43°E 63.38'	Nail & Tag SW sd. U.P. S 22° E 82.67'
C/L pavement West 3' m/l	Nail & Tag SE sd. 28" Oak S 36° W 73.45'
	Centerline of N-S Bit. West 3'

The selected location is accepted by me and is generally accepted by professional surveyors as the best available evidence of the position of the original corner.

C. Description of monument for corner and accessories established to perpetuate locating the position of the corner:  
 E-6 Standard Kent County Monument  
 Nail & K.C. remon. tag on SW side 48" Oak 4' above gnd. N 60° W 46.61'  
 Nail & K.C. remon. tag on N side 22" Oak 5' above gnd. N 88° W 62.48'  
 Nail & K.C. remon. tag on NW side 14" Oak N 38° E 63.07'  
 Nail & K.C. remon. tag on SW side Util. pole S 22° E 82.67'



Signed by Randy J. Kolehouse Date 8/12/97  
 EARTH TECH

Surveyor's Michigan License No. 25854