

SURVEY & REMONUMENTATION

MAR 03 1998

LAND CORNER RECORDATION CERTIFICATE
Filing Requirement of Act 74, Mich. P.A. 1970
KENT COUNTY REMONUMENTATION

For corners in

SECTION

Kent (County)	Located in: Cannon Township	Corner Code #
1. Public Land Survey	T <u>8N</u> R <u>10W</u>	<u>F-9</u>
	T _____ R _____	_____
	T _____ R _____	_____
	T _____ R _____	_____
2. Property Controlling in Section	S _____ T _____ R _____	_____
	S _____ T _____ R _____	_____
3. Miscellaneous Property in Sec.	S _____ T _____ R _____	_____
	S _____ T _____ R _____	_____

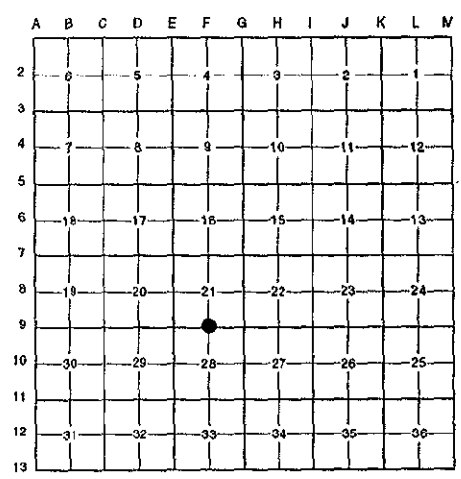
STATE OF MICHIGAN
 COUNTY OF KENT
 RECEIVED FOR RECORD
 97 OCT 15 AM 8:45
 REG. OF DEEDS
Lucy Bond

10112

Register of Deeds Stamp & File Number

4. Lot No. _____, Recorded Plat _____
 5. Private Claims _____

I, Randy Kolehouse, in a field survey on June 12 19 97, do hereby certify that under requirements of P.A. 74 Michigan P.A. of 1970, the corner points mentioned in lines 1 and 2 above were in conformance with regulations and rules therefore as required in the current manual of survey instructions of the United States Department of the interior, Bureau of Land Management or by a decree of a Court of Law and/or that the corner points mentioned in lines 3, 4 and 5 above were in conformance with the rules of the Michigan Board of Land Surveyors or by a Decree of a Court of Law; established, re-established, monumented, re-monumented, recovered, found as expressed below:



NOTE: Not more than 4 corners, all in the same town and range, may be recorded on this certificate.

A. Description of original monument and accessories and/or subsequent restoration:

F-9	1831	G.L.O. Notes	Mullett	Set Post
	N/A	Witness Map	K.C. Surveyor	Iron
	1974	Witness Map	K.C. Surveyor	Monument Box
	1979	L.C.R.C. #2315	Nederveld & Jonker	RR Spike in Monument Box
	1981	L.C.R.C. #2484	Glaza & Associates	Iron in Monument Box
	1983	L.C.R.C. #3719	All-Points Surveyors	RR Spike in Monument Box
	1984	L.C.R.C. #3874	M. Rosema	Fnd. RR Spike in Mon. Box / Set K.C. Monument in Mon. Box
	1992	L.C.R.C. #6306	Chris Marschall	K.C. Monument

This corner was originally approved by the Kent County Remonumentation Peer Group and monumented by M. Rosema on 6/11/84 and was recorded per L.C.R.C. #3874.

B. Description of corner evidence found and/or method applied in restoring or reestablishing corner:

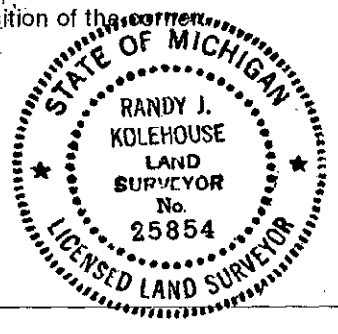
F-9 Found a Standard Kent County Monument in a monument box 5' West of the C/L intersection of Cannonsburg Road (bit.) running East and West and Myers Lake Avenue (bit.) running North per L.C.R.C.'s #3874 and #6306 as set by M. Rosema in place of a railroad spike he found in a monument box which checked L.C.R.C.'s #3719, #2484, #2315 and the K.C. Surveyor's records.

L.C.R.C. #3874	L.C.R.C. #6306
PK nail and remon. tag in top of curb at joint - N42°E 51.20'	Nail & tag NW sd. U.P. N 44 E 58.73'
PK nail and remon. tag in top of curb at joint - S72°W 87.55'	NE corner of wood frame sign (2' above grd) S 10 W 51.64'
	Nail & tag NW sd. U.P. S 39 W 99.16'
	"X" chiseled top 21" conc. culvert and section N 38 W 61.87'

The selected location is accepted by me and is generally accepted by professional surveyors as the best available evidence of the position of the original corner.

C. Description of monument for corner and accessories established to perpetuate locating the position of the corner:

F-9 Standard Kent County Monument in a Monument Box
 Nail & K.C. remon. tag on NW side Util. pole N 44° E 58.73'
 NE cor. wood frame sign 2' above gnd. S 10° W 51.64'
 Nail & K.C. remon. tag on NW side Util. pole S 39° W 99.16'
 "X" chiseled top 21" conc. culvert end section N 38° W 61.87'



Signed by Randy J. Kolehouse Date 6/12/97
 EARTH TECH

Surveyor's Michigan License No. 25854

P.A. 345 1990 KENT COUNTY
 PEER APPROVED 6/26/97
 CHAIRMAN Hans Huber