

SURVEY & REMONUMENTATION
\$7.00
\$2.00

MAR 03 1998

LAND CORNER RECORDATION CERTIFICATE
Filing Requirement of Act 74, Mich. P.A. 1970
KENT COUNTY REMONUMENTATION

For corners in **SECTION**
Kent
 (County)

Located in:	Cannon Township	Corner Code #
1. Public Land Survey	T <u>8N</u> R <u>10W</u>	<u>F-12</u>
	T _____ R _____	_____
	T _____ R _____	_____
	T _____ R _____	_____
2. Property Controlling in Section	S _____ T _____ R _____	_____
	S _____ T _____ R _____	_____
3. Miscellaneous Property in Sec.	S _____ T _____ R _____	_____
	S _____ T _____ R _____	_____

REG. OF DEEDS

Lucy St. Paul

97 DEC 15 AM 10:44

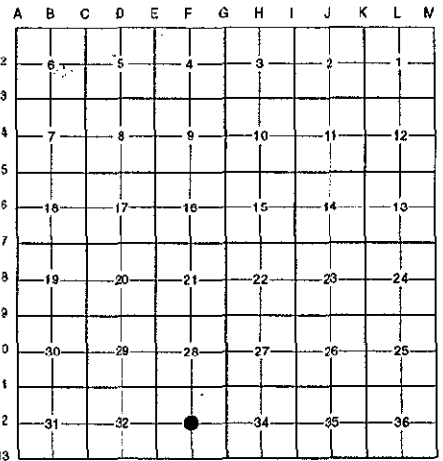
STATE OF MICHIGAN
 COUNTY OF KENT
 RECEIVED FOR RECORD

10402

Register of Deeds Stamp & File Number

4. Lot No. _____, Recorded Plat _____
 5. Private Claims _____

I, Randy Kolehouse, in a field survey on October 18 19 97, do hereby certify that under requirements of P.A. 74 Michigan P.A. of 1970, the corner points mentioned in lines 1 and 2 above were in conformance with regulations and rules therefore as required in the current manual of survey instructions of the United States Department of the interior, Bureau of Land Management or by a decree of a Court of Law and/or that the corner points mentioned in lines 3, 4 and 5 above were in conformance with the rules of the Michigan Board of Land Surveyors or by a Decree of a Court of Law; established, re-established, monumented, re-monumented, recovered, found as expressed below:



NOTE: Not more than 4 corners, all in the same town and range, may be recorded on this certificate.

A. Description of original monument and accessories and/or subsequent restoration:

F-12 This corner was not originally set by the G.L.O.
 1893 Survey Records Williams & Works Stone

P.A. 345 1990 KENT COUNTY,
 PEER APPROVED 10/30/97
 CHAIRMAN *Harry Huber*

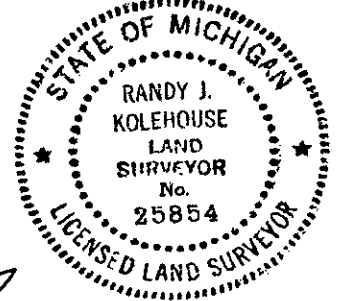
B. Description of corner evidence found and/or method applied in restoring or reestablishing corner:

F-12 Found remnants of a fence corner with fence running East, West and South. Did not find stone shown in the 1893 Williams & Works survey. Fence corner is 1.1' South and 1.7' West of intersection of 1/4 lines. Decided to set corner at the intersection of 1/4 lines.

The selected location is accepted by me and is generally accepted by professional surveyors as the best available evidence of the position of the original corner.

C. Description of monument for corner and accessories established to perpetuate locating the position of the corner:

F-12 Set a Standard Kent County Monument
 Nail & K.C. remon. tag on N side 36" Oak N 50° E 23.09'
 Nail & K.C. remon. tag on N side 10" Maple N 80° W 21.05'
 Nail & K.C. remon. tag on NW side 24" Oak South 23.83'
 Nail & K.C. remon. tag on NE side 6" Oak S 40° E 2.63'



Signed by *Randy J. Kolehouse* Date 12/5/97
 EARTH TECH

Surveyor's Michigan License No. 25854