

**SURVEY & REMONUMENTATION**

~~\$7.00~~  
\$2.00

MAR 03 1998

**LAND CORNER RECORDATION CERTIFICATE**  
Filing Requirement of Act 74, Mich. P.A. 1970  
KENT COUNTY REMONUMENTATION

STATE OF MICHIGAN  
COUNTY OF KENT  
RECEIVED FOR RECORD  
97 NOV 14 AM 9:02  
REG. OF DEEDS  
*Lucy Storch*

For corners in **SECTION**

Kent (County)	Located in: Cannon Township	Corner Code #
1. Public Land Survey	T <u>8N</u> R <u>10W</u>	<u>G-2</u>
	T _____ R _____	_____
	T _____ R _____	_____
	T _____ R _____	_____
2. Property Controlling in Section	S _____ T _____ R _____	_____
	S _____ T _____ R _____	_____
3. Miscellaneous Property in Sec.	S _____ T _____ R _____	_____
	S _____ T _____ R _____	_____
4. Lot No. _____, Recorded Plat _____		
5. Private Claims _____		

**10333**  
Register of Deeds Stamp & File Number

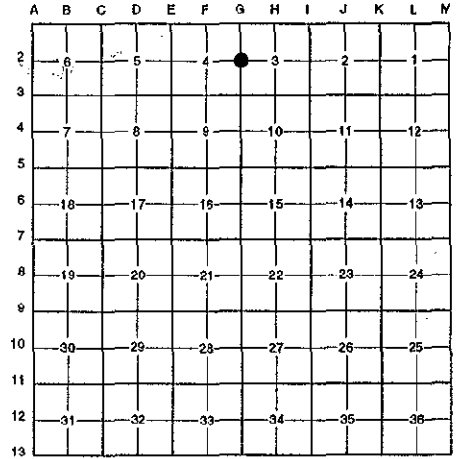
I, Randy Kolehouse, in a field survey on August 18 19 97, do hereby certify that under requirements of P.A. 74 Michigan P.A. of 1970, the corner points mentioned in lines 1 and 2 above were in conformance with regulations and rules therefore as required in the current manual of survey instructions of the United States Department of the interior, Bureau of Land Management or by a decree of a Court of Law and/or that the corner points mentioned in lines 3, 4 and 5 above were in conformance with the rules of the Michigan Board of Land Surveyors or by a Decree of a Court of Law; established, re-established, monumented, re-monumented, recovered, found as expressed below:

**NOTE: Not more than 4 corners, all in the same town and range, may be recorded on this certificate.**

**A. Description of original monument and accessories and/or subsequent restoration:**

G-2	1831	G.L.O. Notes	Mullett	Set Post
	N/A	Witness Map	K.C. Surveyor	Iron
	1972	L.C.R.C. #331	Williams & Works	1" Iron
	1981	L.C.R.C. #2429	Jonker Land Surveys	Fnd. 1" Iron / Set K.C. Monument
	1991	L.C.R.C. #6309	Chris Marschall	K.C. Monument

P.A. 345 1990 KENT COUNTY  
PEER APPROVED 8/28/97  
CHAIRMAN Randy Kolehouse



This corner was originally approved by the Kent County Remonumentation Peer Group and monumented by Rob Jonker on 11/24/81 and was recorded per L.C.R.C. #2429.

**B. Description of corner evidence found and/or method applied in restoring or reestablishing corner:**

G-2 Found a Standard Kent County Monument 13' West and 3' South of the C/L intersection of Bush Road (gravel) running North and East on line of a fence line running Northwesterly per L.C.R.C.'s #2429 and #6309 as set by Rob Jonker in place of a 1" iron he found which checked L.C.R.C. #331 and the K.C. Surveyor's records.

L.C.R.C. #2429

Remon. tag on S side 22" Oak N73°W 7.70'  
Remon. tag on S side 18" Oak S80°E 88.70'

L.C.R.C. #6309

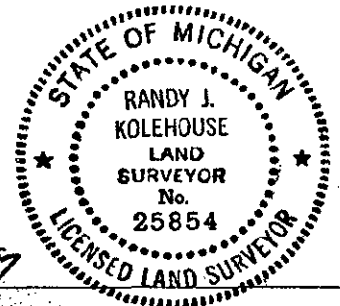
Nail & Tag N sd. 22" Oak S 85 E 88.26'  
Nail & Tag N sd. 12" Hickory N 70 E 82.30'  
Nail & Tag E sd. U.P. S 29 W 112.25'  
Nail & Tag S sd. Twin 18" Oak N 90 W 34.62'  
Nail & Tag S sd. 28" Oak N 86 W 7.66' (m. 7.72')

The selected location is accepted by me and is generally accepted by professional surveyors as the best available evidence of the position of the original corner.

**C. Description of monument for corner and accessories established to perpetuate locating the position of the corner:**

G-2 Standard Kent County Monument

Nail & K.C. remon. tag on N side 22" Oak S 85° E 88.26'  
Nail & K.C. remon. tag on N side 12" Hickory N 70° E 82.30'  
Nail & K.C. remon. tag on E side U. pole S 29° W 112.25'  
Nail & K.C. remon. tag on S side 28" Oak N 86° W 7.72'  
Nail & K.C. remon. tag on S side Twin 18" Oak N 90° W 34.62'



Signed by Randy J. Kolehouse Date 9/23/97  
EARTH TECH

Surveyor's Michigan License No. 25854