

**SURVEY & REMONUMENTATION**

**MAR 03 1998**

**SECTION**

**LAND CORNER RECORDATION CERTIFICATE**

**Filing Requirement of Act 74, Mich. P.A. 1970**

**KENT COUNTY REMONUMENTATION**

For corners in

Kent  
(County)

Located in: Cannon  
Township

Corner Code #

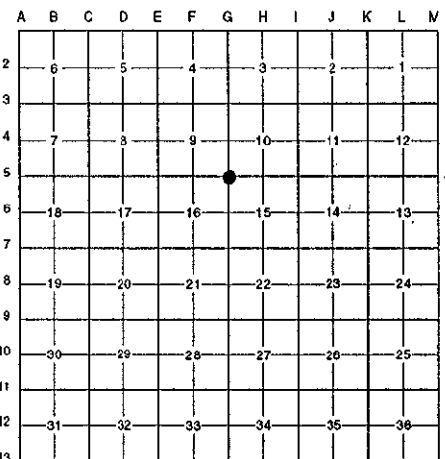
- |                                    |             |              |            |
|------------------------------------|-------------|--------------|------------|
| 1. Public Land Survey              | T <u>8N</u> | R <u>10W</u> | <u>G-5</u> |
|                                    | T _____     | R _____      | _____      |
|                                    | T _____     | R _____      | _____      |
|                                    | T _____     | R _____      | _____      |
| 2. Property Controlling in Section | S _____     | T _____      | R _____    |
|                                    | S _____     | T _____      | R _____    |
| 3. Miscellaneous Property in Sec.  | S _____     | T _____      | R _____    |
|                                    | S _____     | T _____      | R _____    |

4. Lot No. \_\_\_\_\_, Recorded Plat \_\_\_\_\_  
5. Private Claims \_\_\_\_\_

REG. OF DEEDS  
 10117  
 Register of Deeds Stamp & File Number

STATE OF MICHIGAN  
 COUNTY OF KENT  
 RECEIVED FOR RECORD  
 97 OCT 15 AM 8:45

I, Randy Kolehouse, in a field survey on June 13 19 97, do hereby certify that under requirements of P.A. 74 Michigan P.A. of 1970, the corner points mentioned in lines 1 and 2 above were in conformance with regulations and rules therefore as required in the current manual of survey instructions of the United States Department of the Interior, Bureau of Land Management or by a decree of a Court of Law and/or that the corner points mentioned in lines 3, 4 and 5 above were in conformance with the rules of the Michigan Board of Land Surveyors or by a Decree of a Court of Law; established, re-established, monumented, re-monumented, recovered, found as expressed below:



**NOTE: Not more than 4 corners, all in the same town and range, may be recorded on this certificate.**

**A. Description of original monument and accessories and/or subsequent restoration:**

G-5	1831	G.L.O. Notes	Mullett	Set Post	P.A. 345 1990 KENT COUNTY PEER APPROVED <u>6/26/97</u> CHAIRMAN <u>Harry Kubeck</u>
	1940-54	Notes	Williams & Works	Iron	
	1963	Witness Map	K.C. Surveyor	Iron	
	1963	Notes	MDOT	N/A	
	1979	L.C.R.C. #1268	Exxel Engineering	2" Pipe	
	1984	L.C.R.C. #3873	M. Rosema	Fnd. Iron / Set K.C. Monument	
	1991	L.C.R.C. #6311	Chris Marschall	K.C. Monument	

This corner was originally approved by the Kent County Remonumentation Peer Group and monumented by M. Rosema on 6/21/84 and was recorded per L.C.R.C. #3873.

**B. Description of corner evidence found and/or method applied in restoring or reestablishing corner:**

G-5 Found a Standard Kent County Monument in a split rail fence running North and South, 30' ± North of South end of fence, 100' ± North of the C/L of Belding Road (bit.) running East and West, and 55' South of edge of Silver Lake per L.C.R.C.'s #3873 and #6311 as set by M. Rosema in place of an iron he found which checked L.C.R.C. #1268, the 1963 MDOT notes, the K.C. Surveyor's records, and the 1940-54 notes of Williams & Works.

L.C.R.C. #3873 NE corner concrete block fndn to cottage - N35°W 13.43' SE corner brick chimney - S70°W 5.41' SW corner of siding on cottage (0.8' above ground) S41°E 42.17' Nail and remon. tag in W side 24" Poplar - N17°E 46.15' SE corner concrete block fndn to cottage - S19°W 20.02' S edge of water - N 55'	L.C.R.C. #6311 Nail & Tag W sd. 20" Poplar N 17° E 46.15' NE corner (Hse. #7197) conc. block Fndn to cottage N 35° W 13.45' SE corner brick chimney S 79° W 5.41' SE corner conc. block Fndn. to cottage S 19° W 20.01' S. edge of water N 55.00'
--	--

The selected location is accepted by me and is generally accepted by professional surveyors as the best available evidence of the position of the original corner.

**C. Description of monument for corner and accessories established to perpetuate locating the position of the corner:**

G-5 Standard Kent County Monument  
 Nail & K.C. remon. tag on W side 20" Poplar N 17° E 46.15'  
 NE cor. (hse. #7197) conc. block fndn. to cottage N 35° W 13.45'  
 SE cor. brick chimney to hse. #7197 S 79° W 5.41'  
 SE cor. conc. block fndn. to hse. #7197 S 19° W 20.01'  
 South edge of Silver Lake North 55' ±



Signed by Randy J. Kolehouse Date 8/12/97  
 Surveyor's Michigan License No. 25854