

SURVEY & REMONUMENTATION

\$7.00
\$2.00
MAR 03 1998

LAND CORNER RECORDATION CERTIFICATE
Filing Requirement of Act 74, Mich. P.A. 1970
KENT COUNTY REMONUMENTATION

For corners in **SECTION**

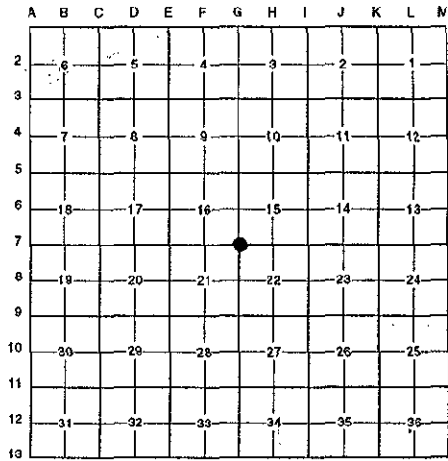
Kent (County)	Located in: Cannon Township	Corner Code #
1. Public Land Survey	T <u>8N</u> R <u>10W</u>	<u>G-7</u>
	T _____ R _____	_____
	T _____ R _____	_____
	T _____ R _____	_____
2. Property Controlling in Section	S _____ T _____	_____
	S _____ T _____	_____
3. Miscellaneous Property in Sec.	S _____ T _____	_____
	S _____ T _____	_____

STATE OF MICHIGAN
COUNTY OF KENT
RECEIVED FOR RECORD
97 NOV 14 AM 9:02
REG. OF DEEDS
Lucy Bond

10335
Register of Deeds Stamp & File Number

4. Lot No. _____, Recorded Plat _____
5. Private Claims _____

I, Randy Kolehouse, in a field survey on August 19 19 97, do hereby certify that under requirements of P.A. 74 Michigan P.A. of 1970, the corner points mentioned in lines 1 and 2 above were in conformance with regulations and rules therefore as required in the current manual of survey instructions of the United States Department of the interior, Bureau of Land Management or by a decree of a Court of Law and/or that the corner points mentioned in lines 3, 4 and 5 above were in conformance with the rules of the Michigan Board of Land Surveyors or by a Decree of a Court of Law; established, re-established, monumented, re-monumented, recovered, found as expressed below:



NOTE: Not more than 4 corners, all in the same town and range, may be recorded on this certificate.

A. Description of original monument and accessories and/or subsequent restoration:

G-7	1831	G.L.O. Notes	Mullett	Set Post
	N/A	Witness Map	K.C. Surveyor	Stones
	1975	L.C.R.C. #876	Medema, Van Kooten & Assoc.	"T" Iron
	1981	L.C.R.C. #2426	Jonker Land Surveys	Fnd. "T" Iron / Set K.C. Monument
	1991	L.C.R.C. #6313	Chris Marschall	K.C. Monument

This corner was originally approved by the Kent County Remonumentation Peer Group and monumented by Rob Jonker on 12/5/81 and was recorded per L.C.R.C. #2426.

B. Description of corner evidence found and/or method applied in restoring or reestablishing corner:

G-7 Found a Standard Kent County Monument at the corner of fence lines running North, South and West on top of hill per L.C.R.C.'s #2426 and #6313 as set by Rob Jonker in place of a "T" iron he found which checked L.C.R.C. #876 and the K.C. Surveyor's records.

L.C.R.C. #2426

L.C.R.C. #6313

Remon. tag on E side 12" tr. Oak N14°W 21.6'	Nail & Tag E sd. 14" Tri. Oak N 14 W 21.53'
Remon. tag on SW side 14" Oak N57°W 14.52'	Nail & Tag SW sd. 18" Oak N 57 W 14.47'
Remon. tag on SE side 16" Oak N55°E 42.60'	Nail & Tag N sd. 14" Oak S 50 W 36.81'
Remon. tag on NE side 12" Oak S50°E 40.36'	Nail & Tag NE sd. 18" Oak S 50 E 40.30'
Remon. tag on N side 12" Oak S50°W 36.8'	Nail & Tag SE sd. 18" Oak N 55 E 42.54'

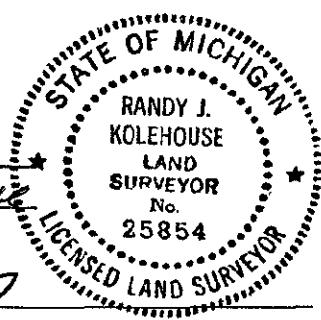
The selected location is accepted by me and is generally accepted by professional surveyors as the best available evidence of the position of the original corner.

C. Description of monument for corner and accessories established to perpetuate locating the position of the corner:

G-7 Standard Kent County Monument

- Nail & K.C. remon. tag on E side 14" Triple Oak N 14° W 21.53'
- Nail & K.C. remon. tag on SW side 18" Oak N 57° W 14.47'
- Nail & K.C. remon. tag on N side 14" Oak S 50° W 36.81'
- Nail & K.C. remon. tag on NE side 18" Oak S 50° E 40.30'

P.A. 345 1990 KENT COUNTY
PEER APPROVED 8/26/97
CHAIRMAN Randy Kolehouse



Signed by Randy J. Kolehouse
EARTH TECH

Date 9/23/97

Surveyor's Michigan License No. 25854