

MAR 03 1998

**SECTION**

**LAND CORNER RECORDATION CERTIFICATE**  
**Filing Requirement of Act 74, Mich. P.A. 1970**  
**KENT COUNTY REMONUMENTATION**

STATE OF MICHIGAN  
 COUNTY OF KENT  
 RECEIVED FOR RECORD  
 97 OCT 15 AM 8:45  
 REG. OF DEEDS  
*Luci Bond*

For corners in

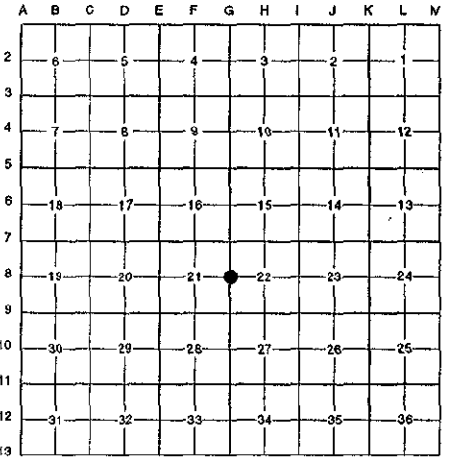
Kent (County)	Located in: Cannon Township	Corner Code #
1. Public Land Survey	T <u>8N</u> R <u>10W</u>	<u>G-8</u>
	T _____ R _____	_____
	T _____ R _____	_____
	T _____ R _____	_____
2. Property Controlling in Section	S _____ T _____ R _____	_____
	S _____ T _____ R _____	_____
3. Miscellaneous Property in Sec.	S _____ T _____ R _____	_____
	S _____ T _____ R _____	_____

**10118**

Register of Deeds Stamp & File Number

4. Lot No. \_\_\_\_\_, Recorded Plat \_\_\_\_\_  
 5. Private Claims \_\_\_\_\_

I, Randy Kolehouse, in a field survey on June 13 19 97, do hereby certify that under requirements of P.A. 74 Michigan P.A. of 1970, the corner points mentioned in lines 1 and 2 above were in conformance with regulations and rules therefore as required in the current manual of survey instructions of the United States Department of the interior, Bureau of Land Management or by a decree of a Court of Law and/or that the corner points mentioned in lines 3, 4 and 5 above were in conformance with the rules of the Michigan Board of Land Surveyors or by a Decree of a Court of Law; established, re-established, monumented, re-monumented, recovered, found as expressed below:



**NOTE: Not more than 4 corners, all in the same town and range, may be recorded on this certificate.**

A. Description of original monument and accessories and/or subsequent restoration:

G-8	1831	G.L.O. Notes	Mullett	Set Post
	1963	Witness Map	K.C. Surveyor	Iron
	1972	L.C.R.C. #318	Mc Pherson	1" Solid Rod
	1972	L.C.R.C. #748	Ratekin	1" Solid Iron
	1975	L.C.R.C. #876	Medema, Van Kooten & Assoc.	1" Solid Iron
	1981	L.C.R.C. #2425	Jonker Land Surveys	Fnd. 1" Iron / Set K.C. Monument
	1992	L.C.R.C. #6314	Chris Marschall	K.C. Monument

P.A. 345 1990 KENT COUNTY  
 PEER APPROVED 6/26/97  
 CHAIRMAN *[Signature]*

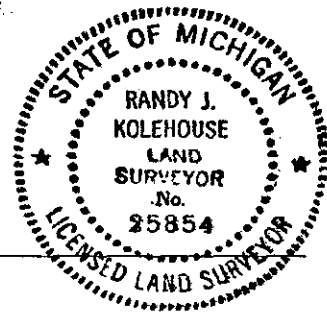
This corner was originally approved by the Kent County Remonumentation Peer Group and monumented by Rob Jonker on 12/1/81 and was recorded per L.C.R.C. #2425.

B. Description of corner evidence found and/or method applied in restoring or reestablishing corner:  
 G-8 Found a Standard Kent County Monument on the C/L of Kreuter Road (bit.) running East and West on line of a fence line running North and a tree row running South per L.C.R.C.'s #2425 and #6314 as set by Rob Jonker in place of a 1" solid iron he found which checked L.C.R.C.'s #876, #748, #318 and the K.C. Surveyor's records.

L.C.R.C. #2425	L.C.R.C. #6314
Remon. tag on N side 24" Walnut S47°W 32.17'	Nail & tag W sd. 28" Walnut N 01 E 32.24'
Remon. tag on W side 24" Walnut N06°E 32.29'	Nail & tag S sd. P.P. N 74 W 133.50'
C/L 2 1/2" pipe at base S04°W 22.2'	Nail & tag S sd. 44" Walnut S 76 W 107.80'
Remon. tag on N side p. pole S73°E 128.66'	Nail & tag N sd. 24 Walnut S 45 W 32.12'
In line tree & fence lines N & S	

The selected location is accepted by me and is generally accepted by professional surveyors as the best available evidence of the position of the original corner.

C. Description of monument for corner and accessories established to perpetuate locating the position of the corner:  
 G-8 Standard Kent County Monument  
 Nail & K.C. remon. tag on W side 28" Walnut N 01° E 32.24'  
 Nail & K.C. remon. tag on S side P. pole N 74° W 133.50'  
 Nail & K.C. remon. tag on S side 44" Walnut S 76° W 107.80'  
 Nail & K.C. remon. tag on N side 24" Walnut S 45° W 32.12'



Signed by *Randy J. Kolehouse* Date 8/12/97  
 EARTH TECH  
 Surveyor's Michigan License No. 25854