

SURVEY & REMONUMENTATION

MAR 03 1998

\$7.00
\$2.00

SECTION

LAND CORNER RECORDATION CERTIFICATE
Filing Requirement of Act 74, Mich. P.A. 1970
KENT COUNTY REMONUMENTATION

For corners in

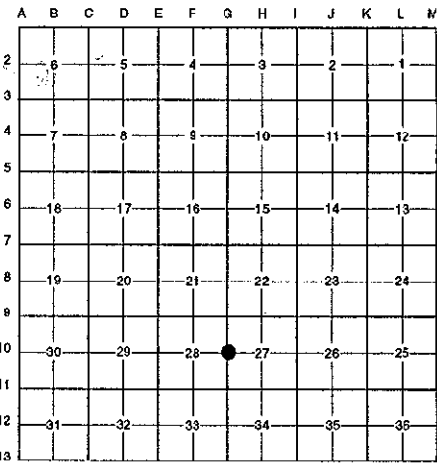
Kent (County)	Located in: Cannon Township	Corner Code #
1. Public Land Survey	T <u>8N</u> R <u>10W</u>	<u>G-10</u>
	T _____ R _____	_____
	T _____ R _____	_____
	T _____ R _____	_____
2. Property Controlling in Section	S _____ T _____ R _____	_____
	S _____ T _____ R _____	_____
3. Miscellaneous Property in Sec.	S _____ T _____ R _____	_____
	S _____ T _____ R _____	_____

STATE OF MICHIGAN
COUNTY OF KENT
RECEIVED FOR RECORD
97 NOV 14 AM 9:02
REG. OF DEEDS
Lucy Bond

10337
Register of Deeds Stamp & File Number

4. Lot No. _____, Recorded Plat _____
5. Private Claims _____

I, Randy Kolehouse, in a field survey on August 18 19 97, do hereby certify that under requirements of P.A. 74 Michigan P.A. of 1970, the corner points mentioned in lines 1 and 2 above were in conformance with regulations and rules therefore as required in the current manual of survey instructions of the United States Department of the interior, Bureau of Land Management or by a decree of a Court of Law and/or that the corner points mentioned in lines 3, 4 and 5 above were in conformance with the rules of the Michigan Board of Land Surveyors or by a Decree of a Court of Law; established, re-established, monumented, re-monumented, recovered, found as expressed below:



NOTE: Not more than 4 corners, all in the same town and range, may be recorded on this certificate.

A. Description of original monument and accessories and/or subsequent restoration:

G-10	1831	G.L.O. Notes	Mullett	Set Post
	N/A	Witness Map	K.C. Surveyor	N/A
	1981	L.C.R.C. #2319	Nederveld & Jonker	3/4" Round Iron
	1982	L.C.R.C. #3117	Williams & Works	Fnd. 3/4" Iron / Set K.C. Monument
	1991	L.C.R.C. #6316	Chris Marschall	K.C. Monument

P.A. 345 1990 KENT COUNTY
PEER APPROVED 8/28/97
CHAIRMAN Randy Kolehouse

This corner was originally approved by the Kent County Remonumentation Peer Group and monumented by Williams & Works on 10/5/82 and was recorded per L.C.R.C. #3117.

B. Description of corner evidence found and/or method applied in restoring or reestablishing corner:

G-10 Found a Standard Kent County Monument 2.6' East of a fence line running North and South and 500' ± ESE of Rosses Street (bit.) cul-de-sac per L.C.R.C.'s #3117 and #6316 as set by Williams & Works in place of a 3/4" iron they found which checked L.C.R.C. #2319 and the K.C. Surveyor's records.

L.C.R.C. #3117

- Nail & KC Remon tag in NW side 12" Oak N 40°E 12.50'
- Nail & KC Remon tag in NE side 15" Oak N 40°W 10.60'
- Nail & KC Remon tag in SW side 10" Oak S 45°E 22.50'

L.C.R.C. #6316

- Nail & Tag NW sd. 12" Oak (Dead) N 40 E 12.52'
- Nail & Tag SW sd. 14" Oak S 45 E 22.53'
- Nail & Tag NE sd. 18" Oak N 45 W 10.20'
- Nail & Tag NW sd. 6" Walnut S 50 W 19.11'
- Nail & Tag NE sd. 4" Elm N 35 W 11.45'

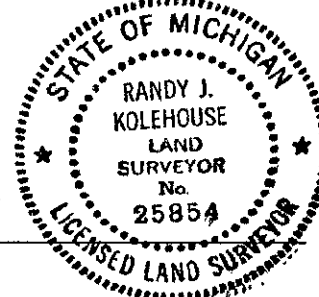
The selected location is accepted by me and is generally accepted by professional surveyors as the best available evidence of the position of the original corner.

C. Description of monument for corner and accessories established to perpetuate locating the position of the corner:

G-10 Standard Kent County Monument

- Nail & K.C. remon. tag on SW side 14" Oak S 45° E 22.53'
- Nail & K.C. remon. tag on NE side 24" Oak N 45° W 10.20'
- Nail & K.C. remon. tag on NW side 6" Walnut S 50° W 19.11'
- Nail & K.C. remon. tag on NE side 6" Elm N 35° W 11.45'

Signed by Randy J. Kolehouse Date 9/23/97
EARTH TECH



Surveyor's Michigan License No. 25854