

**SURVEY & REMONUMENTATION**

\$7.00 MAR 03 1998  
\$2.00

**SECTION**

**LAND CORNER RECORDATION CERTIFICATE**  
Filing Requirement of Act 74, Mich. P.A. 1970  
KENT COUNTY REMONUMENTATION

For corners in

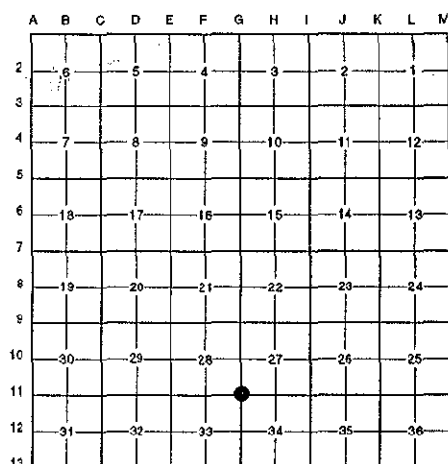
Kent (County)	Located in: Cannon Township	Corner Code #
1. Public Land Survey	T <u>8N</u> R <u>10W</u>	<u>G-11</u>
	T _____ R _____	_____
	T _____ R _____	_____
	T _____ R _____	_____
2. Property Controlling in Section	S _____ T _____ R _____	_____
	S _____ T _____ R _____	_____
3. Miscellaneous Property in Sec.	S _____ T _____ R _____	_____
	S _____ T _____ R _____	_____

STATE OF MICHIGAN  
COUNTY OF KENT  
RECEIVED FOR RECORD  
97 NOV 14 AM 9:02  
REG. OF DEEDS  
*Lucy Bond*

**10338**  
Register of Deeds Stamp & File Number

- 4. Lot No. \_\_\_\_\_, Recorded Plat \_\_\_\_\_
- 5. Private Claims \_\_\_\_\_

I, Randy Kolehouse, in a field survey on August 15 19 97, do hereby certify that under requirements of P.A. 74 Michigan P.A. of 1970, the corner points mentioned in lines 1 and 2 above were in conformance with regulations and rules therefore as required in the current manual of survey instructions of the United States Department of the interior, Bureau of Land Management or by a decree of a Court of Law and/or that the corner points mentioned in lines 3, 4 and 5 above were in conformance with the rules of the Michigan Board of Land Surveyors or by a Decree of a Court of Law; established, re-established, monumented, re-monumented, recovered, found as expressed below:



**NOTE: Not more than 4 corners, all in the same town and range, may be recorded on this certificate.**

**A. Description of original monument and accessories and/or subsequent restoration:**

G-11	1831	G.L.O. Notes	Mullett	Set Post
	N/A	Witness Map	K.C. Surveyor	Leaded Stones
	1981	L.C.R.C. #2319	Nederveld & Jonker	Round Iron
	1982	L.C.R.C. #2967	Williams & Works	Fnd 1" Iron / Set K.C. Monument
	1992	L.C.R.C. #6317	Chris Marschall	K.C. Monument

P.A. 345 1990 KENT COUNTY  
PEER APPROVED 8/28/97  
CHAIRMAN Harry Hubert

This corner was originally approved by the Kent County Remonumentation Peer Group and monumented by Williams & Works on 7/1/82 and was recorded per L.C.R.C. #2967.

**B. Description of corner evidence found and/or method applied in restoring or reestablishing corner:**

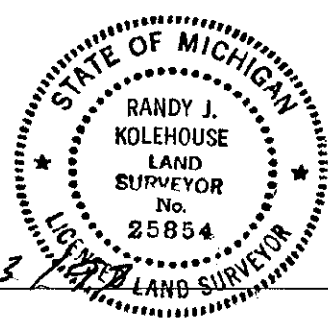
G-11 K.C. Monument has been destroyed. Reset point using previous witnesses from L.C.R.C.'s #2319, #2967 and #6317 and the K.C. Surveyor's records. This point is 6' South and 150' ± West of the C/L intersection of 5 Mile Road (bit.) and Dursam Avenue (gravel).

L.C.R.C. #2967	L.C.R.C. #6317
Nail & KC Remon tag in E side 6" Poplar N 40°W 44.70'	Nail & tag SE sd. 20" Oak N 10 E 30.09'
Nail & KC Remon tag in E side 16" Oak N 10°E 30.20'	Nail & Tag NE sd. 10" Poplar N 47 W 44.67'
	Nail & tag NW sd. 18" Oak (6' above grd.) S 42 W 54.02'

The selected location is accepted by me and is generally accepted by professional surveyors as the best available evidence of the position of the original corner.

**C. Description of monument for corner and accessories established to perpetuate locating the position of the corner:**

- G-11 Replaced P.K. Nail with a Standard Kent County Monument
- Nail & K.C. remon. tag on SE side 20" Oak N 10° E 30.09'
- Nail & K.C. remon. tag on NE side 10" Poplar N 47° W 44.67'
- Double-headed nail in 6" Poplar N 55° W 61.74'
- C/L Dursam Avenue East 150' ±
- C/L 5 Mile Road North 6'



Signed by Randy J. Kolehouse Date 9/23/97  
EARTH TECH  
Surveyor's Michigan License No. 25854