

SURVEY & REMONUMENTATION

MAR 03 1998

SECTION

LAND CORNER RECORDATION CERTIFICATE
Filing Requirement of Act 74, Mich. P.A. 1970
KENT COUNTY REMONUMENTATION

For corners in

Kent (County)	Located in: Cannon Township	Corner Code #
1. Public Land Survey	T <u>8N</u> R <u>10W</u>	<u>G-12</u>
	T _____ R _____	_____
	T _____ R _____	_____
	T _____ R _____	_____
2. Property Controlling in Section	S _____ T _____ R _____	_____
	S _____ T _____ R _____	_____
3. Miscellaneous Property in Sec.	S _____ T _____ R _____	_____
	S _____ T _____ R _____	_____

REG. OF DEEDS
Eric Bond
 97 OCT 15 AM 8:45
 STATE OF MICHIGAN
 COUNTY CLERK
 RECEIVED FOR RECORD

10119

Register of Deeds Stamp & File Number

4. Lot No. _____, Recorded Plat _____
 5. Private Claims _____

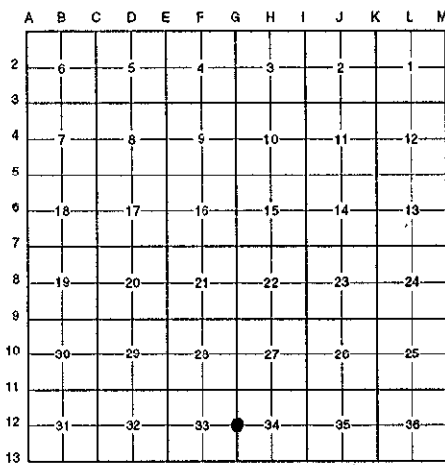
I, Randy Kolehouse, in a field survey on June 13 19 97, do hereby certify that under requirements of P.A. 74 Michigan P.A. of 1970, the corner points mentioned in lines 1 and 2 above were in conformance with regulations and rules therefore as required in the current manual of survey instructions of the United States Department of the interior, Bureau of Land Management or by a decree of a Court of Law and/or that the corner points mentioned in lines 3, 4 and 5 above were in conformance with the rules of the Michigan Board of Land Surveyors or by a Decree of a Court of Law; established, re-established, monumented, re-monumented, recovered, found as expressed below:

NOTE: Not more than 4 corners, all in the same town and range, may be recorded on this certificate.

A. Description of original monument and accessories and/or subsequent restoration:

G-12	1831	G.L.O. Notes	Mullett	Set Post
	N/A	Witness Map	K.C. Surveyor	Leaded Stone
	1978	L.C.R.C. #1222	William Byl	Stone
	1981	L.C.R.C. #2424	Jonker Land Surveys	Fnd. 3/4" Round Iron / Set K.C. Monument
	1991	L.C.R.C. #6318	Chris Marschall	K.C. Monument

P.A. 345 1990 KENT COUNTY
 PEER APPROVED 6/26/97
 CHAIRMAN *Randy Kolehouse*
 Set K.C. Monument



This corner was originally approved by the Kent County Remonumentation Peer Group and monumented by Rob Jonker on 12/1/81 and was recorded per L.C.R.C. #2424.

B. Description of corner evidence found and/or method applied in restoring or reestablishing corner:

G-12 Found a Standard Kent County Monument (5" below ground) 6' West of the C/L of Dursum Avenue (gravel) running North and South on line of a tree row running East per L.C.R.C.'s #2424 and #6318 as set by Rob Jonker in place of a 3/4" round iron he found at grade 0.2' West of leaded stone 2' below grade which checked L.C.R.C. #1222 and the K.C. Surveyor's records.

L.C.R.C. #2424

- Remon. tag on S side 16" Oak N 86° W 39.72'
- Remon. tag on SW side 20" Oak N 46° W 69.70'
- Remon. tag on E side 18" Ironwood S 25° W 51.84'

L.C.R.C. #6318

- Nail & Tag S sd. 24" Oak N 86 W 39.63'
- Nail & Tag SW sd. 32" Oak N 46 W 69.65'
- Nail & Tag N sd. 36" Oak S 86 E 32.08'
- Nail & Tag E sd. 26" Ironwood S 25 W 51.76'

The selected location is accepted by me and is generally accepted by professional surveyors as the best available evidence of the position of the original corner.

C. Description of monument for corner and accessories established to perpetuate locating the position of the corner:

G-12 Standard Kent County Monument

- Nail & K.C. remon. tag on S side 24" Oak N 86° W 39.63'
- Nail & K.C. remon. tag on SW side 32" Oak N 46° W 69.65'
- Nail & K.C. remon. tag on N side 36" Oak S 86° E 32.08'
- Nail & K.C. remon. tag on E side Ironwood S 25° W 51.76'

Signed by *Randy J. Kolehouse*
 EARTH TECH

Date 8/12/97

Surveyor's Michigan License No. 25854

