

SURVEY & REMONUMENTATION

OCT 28 1994

LAND CORNER RECORDATION CERTIFICATE
Filing Requirement of Act 74, Mich. P.A. 1970

STATE OF MICHIGAN
COUNTY OF KENT
RECEIVED FOR RECORD

94 AUG 24 AM 11:52

For corners in COMMISSION
Kent
(County)

Located In: Cannon Twp.
Corner Code #

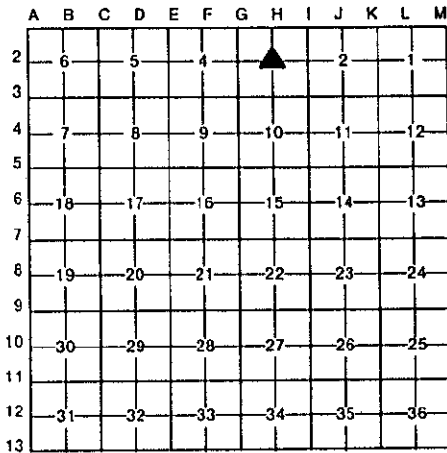
- | | | |
|------------------------------------|-----------|---------------|
| 1. Public Land Survey | T8N R 10W | H-2 |
| | T R | Center Sec. 3 |
| | T R | |
| | T R | |
| 2. Property Controlling in Section | S T R | |
| | S T R | |
| 3. Miscellaneous Property in Sec. | S T R | |
| | S T R | |

Wallace E. Glaza
REG. OF DEEDS

6974

Register of Deeds Stamp & File Number

4. Lot No. _____, Recorded Plat _____
5. Private Claims _____



I, Wallace E. Glaza on a field survey on August 2, 19 94, do hereby certify that under requirements of P.A. 74, Michigan P.A. of 1970, the corner points mentioned in lines 1 and 2 above were in conformance with regulations and rules therefore as required in the current manual of survey instructions of the United States Department of the Interior, Bureau of Land Management or by a decree of a Court of Law and/or that the corner points mentioned in lines 3, 4 and 5 above were in conformance with the rules of the Michigan Board of Land Surveyors or by a Decree of a Court of Law; established, re-established, monumented, re-monumented, recovered, found as expressed below:

NOTE: Not more than 4 corners, all in the same town and range, may be recorded on this certificate.

A. Description of original monument and accessories and/or subsequent restoration:

L.C.R.C. No. 874	L.C.R.C. No. 1239
Set "T" at intersection of 1/4 lines	"T" iron as set and wit. by former surveys
Spike in NE side 10" Oak NW 43.20'	PK face P. Pole S10°E 98.95'
Spike in NW side 30" Maple E-NE 50.52'	Nail 26" Maple N60°E 50.70'
Spike in N. side 36" Oak E-SE 62.55'	Nail 36" Oak S80°E 62.70'

B. Description of corner evidence found and/or method applied in restoring or reestablishing corner:

H-2 (Center of Section 3, T8N, R10W, Cannon Township, Kent County, Michigan)
Found "T" iron and verified it to be at the intersection of the 1/4 lines.
Replaced "T" iron with standard 4" x 30" Kent County monument (Harrison)

West 1/4 corner to Center - 2665.15'
North 1/4 corner to Center - 3480.51'
East 1/4 corner to Center - 2667.51'
South 1/4 corner to Center - 2650.45'

P.A. 345 1990 KENT COUNTY
PEER APPROVED 7/28/99
CHAIRMAN *Harry Huber*

C. Description of monument for corner and accessories established to perpetuate locating the position of the corner:

H-2 (4" x 30" Kent County monument)

1) Remon tag & nail in SW'ly side 14" Oak	N60°W	43.23'
2) Remon tag & nail in S'ly side 40" Maple	N65°E	50.06'
3) Remon tag & nail in S'ly side 48" Oak	S70°E	63.39'
4) Remon tag & nail in W'ly side P. Pole	S05°E	99.14' (6' above grade)
5) Centerline E-W gravel road	North	4'±



Signed by Wallace E. Glaza
Glaza and Associates, Inc.
Surveyor's Michigan License No. 31592

Date August 4, 1999