

SURVEY & REMONUMENTATION

MAR 03 1998

SECTION

LAND CORNER RECORDATION CERTIFICATE
Filing Requirement of Act 74, Mich. P.A. 1970
KENT COUNTY REMONUMENTATION

For corners in

Kent (County)	Located in: Cannon Township	Corner Code #
1. Public Land Survey	T <u>8N</u> R <u>10W</u>	<u>H-9</u>
	T _____ R _____	_____
	T _____ R _____	_____
	T _____ R _____	_____
2. Property Controlling in Section	S _____ T _____ R _____	_____
	S _____ T _____ R _____	_____
3. Miscellaneous Property in Sec.	S _____ T _____ R _____	_____
	S _____ T _____ R _____	_____

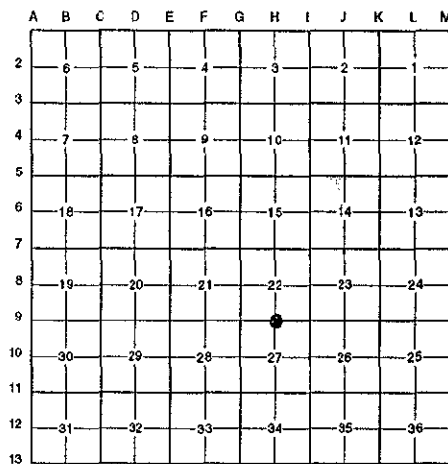
STATE OF MICHIGAN
 COUNTY OF KENT
 RECEIVED FOR RECORD
 97 OCT 15 AM 8:47
 REG. OF DEEDS
Lucy Bond

10125

Register of Deeds Stamp & File Number

4. Lot No. _____, Recorded Plat _____
 5. Private Claims _____

I, Randy Kolehouse, in a field survey on June 19 19 97, do hereby certify that under requirements of P.A. 74 Michigan P.A. of 1970, the corner points mentioned in lines 1 and 2 above were in conformance with regulations and rules therefore as required in the current manual of survey instructions of the United States Department of the Interior, Bureau of Land Management or by a decree of a Court of Law and/or that the corner points mentioned in lines 3, 4 and 5 above were in conformance with the rules of the Michigan Board of Land Surveyors or by a Decree of a Court of Law; established, re-established, monumented, re-monumented, recovered, found as expressed below:



NOTE: Not more than 4 corners, all in the same town and range, may be recorded on this certificate.

A. Description of original monument and accessories and/or subsequent restoration:

H-9	1831	G.L.O. Notes	Mullett	Set Post
	1935	Witness Map	K.C. Surveyor	Monument
	1980	L.C.R.C. #1356	Williams & Works	5/8" Iron in Monument Box
	1981	L.C.R.C. #2420	Jonker Land Surveys	Fnd. 5/8" Iron in Mon. Box / Set K.C. Monument in Mon. Box
	1989	L.C.R.C. #5248	J. Bueche	K.C. Monument in Mon. Box

This corner was originally approved by the Kent County Remonumentation Peer Group and monumented by Rob Jonker on 11/30/81 and was recorded per L.C.R.C. #2420.

B. Description of corner evidence found and/or method applied in restoring or reestablishing corner:

H-9 Found a Standard Kent County Monument in a monument box 7' South of the C/L of Cannonsburg Road (bit.) running East and West and 200' ± East of the C/L of Sunfish Lake Avenue (bit.) running North and South on line of a tree row and fence line running South per L.C.R.C.'s #2420 and #5248 as set by Rob Jonker in place of a 5/8" iron he found in a monument box which checked L.C.R.C. #1356 and the K.C. Surveyor's records.

L.C.R.C. #2420

Remon. tag on E side 18" Oak S07°W 63.90'
 Remon. tag on NE side 18" tw. Oak S35°E 85.65'
 Remon. tag on W side 14" Oak N43°E 63.31'
 C/L fence & tree row to South, 5'W
 On fence line to North

L.C.R.C. #5248

Remon. tag & nail on E side 24" Oak S 07° W 63.80'
 Remon. tag & nail on NE side 24" Tw. Oak S 35° E 85.42'
 Remon. tag & nail on W side 18" Oak N 43° E 63.15'
 Remon. tag & nail on S side 12" dbl. 12" Pine N 65° W 123.03'
 C/L traveled way, N 7.2' m/l
 C/L fence & tree row to South, 5'W

The selected location is accepted by me and is generally accepted by professional surveyors as the best available evidence of the position of the original corner.

C. Description of monument for corner and accessories established to perpetuate locating the position of the corner:

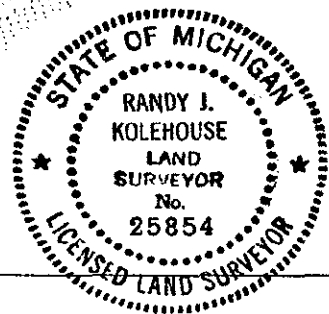
H-9 Standard Kent County Monument in a Monument Box

Nail & K.C. remon. tag on E side 24" Oak S 07° W 63.80'
 Nail & K.C. remon. tag on NE side 24" Twin Oak S 35° E 85.42'
 Nail & K.C. remon. tag on W side 18" Oak N 47° E 63.15'
 Nail & K.C. remon. tag on N side 12" Dbl. Pine N 65° W 127.03'

Signed by Randy J. Kolehouse
 EARTH TECH

Date 8/12/97

Surveyor's Michigan License No. 25854



P.A. 345 1990 KENT COUNTY
 PEER APPROVED 6/26/97
 CHAIRMAN Hamp Huber
FORM APPROVED BY MICHIGAN STATE BOARD OF LAND SURVEYORS, JAN. 26, 1971
 REVISED MAY 14, 1975
 REVISED JAN., 1983