

SURVEY & REMONUMENTATION
 \$7.00
 \$2.00
 MAR 03 1998

LAND CORNER RECORDATION CERTIFICATE
 Filing Requirement of Act 74, Mich. P.A. 1970
 KENT COUNTY REMONUMENTATION

For corners in SECTION

Kent (County)	Located in: Cannon Township	Corner Code #
1. Public Land Survey	T <u>8N</u> R <u>10W</u>	<u>H-12</u>
	T _____ R _____	_____
	T _____ R _____	_____
	T _____ R _____	_____
2. Property Controlling in Section	S _____ T _____ R _____	_____
	S _____ T _____ R _____	_____
3. Miscellaneous Property in Sec.	S _____ T _____ R _____	_____
	S _____ T _____ R _____	_____

STATE OF MICHIGAN
 COUNTY OF KENT
 RECEIVED FOR RECORDS
 97 DEC 15 AM 10:44
 REG. OF DEEDS
Lucy Stand
 10406
 Register of Deeds Stamp & File Number

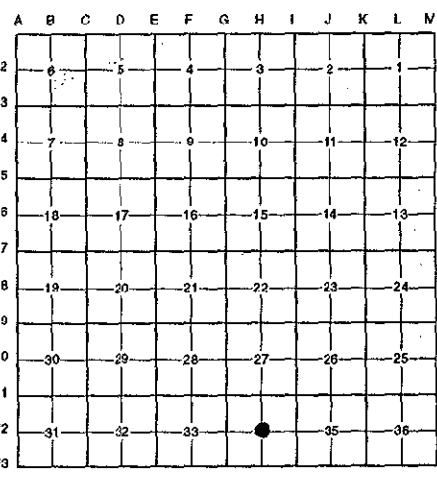
4. Lot No. _____, Recorded Plat _____
 5. Private Claims _____

I, Randy Kolehouse, in a field survey on October 29 19 97, do hereby certify that under requirements of P.A. 74 Michigan P.A. of 1970, the corner points mentioned in lines 1 and 2 above were in conformance with regulations and rules therefore as required in the current manual of survey instructions of the United States Department of the Interior, Bureau of Land Management or by a decree of a Court of Law and/or that the corner points mentioned in lines 3, 4 and 5 above were in conformance with the rules of the Michigan Board of Land Surveyors or by a Decree of a Court of Law; established, re-established, monumented, re-monumented, recovered, found as expressed below:

NOTE: Not more than 4 corners, all in the same town and range, may be recorded on this certificate.

A. Description of original monument and accessories and/or subsequent restoration:

H-12 This corner was not originally set by the G.L.O.
 1961 Witness Map K.C. Surveyor Leaded Stone
 1978 L.C.R.C. #1198 R. Jonker Leaded Stone



P.A. 345 1990 KENT COUNTY
 PEER APPROVED 11/20/97
 CHAIRMAN *Randy Kolehouse*

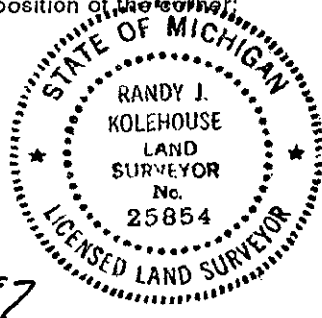
Description of corner evidence found and/or method applied in restoring or reestablishing corner:

H-12 Found a leaded stone 3' West of a fence line running South and the remnants of a fence running West, North and East per L.C.R.C. #1198 and the K.C. Surveyor's records. Stone is 2.2' South and 3.2' West of the intersection of 1/4 lines. Accepted leaded stone as Center of Section.

The selected location is accepted by me and is generally accepted by professional surveyors as the best available evidence of the position of the original corner.

Description of monument for corner and accessories established to perpetuate locating the position of the corner:

H-12 Replaced Leaded Stone with a Standard Kent County Monument
 Nail & K.C. remon. tag on NW side 10" W. Oak N 77° E 15.32'
 Nail & K.C. remon. tag on SW side 14" W. Oak S 60° E 65.60'
 Nail & K.C. remon. tag on SE side 16" B. Oak S 56° W 42.65'
 Nail & K.C. remon. tag on NE side 26" B. Oak N 45° W 8.18'
 Nail & K.C. remon. tag on SW side 16" Aspen N 14° W 60.08'



signed by *Randy J. Kolehouse* Date 11/29/97
 EARTH TECH
 Surveyor's Michigan License No. 25854