

SURVEY & REMONUMENTATION

MAR 03 1998

SECTION

LAND CORNER RECORDATION CERTIFICATE
Filing Requirement of Act 74, Mich. P.A. 1970
KENT COUNTY REMONUMENTATION

For corners in

<u>Kent</u> (County)	Located in: Cannon Township	Corner Code #
1. Public Land Survey	T <u>8N</u> R <u>10W</u>	<u>1-2</u>
	T _____ R _____	_____
	T _____ R _____	_____
	T _____ R _____	_____
2. Property Controlling in Section	S _____ T _____ R _____	_____
	S _____ T _____ R _____	_____
3. Miscellaneous Property in Sec.	S _____ T _____ R _____	_____
	S _____ T _____ R _____	_____

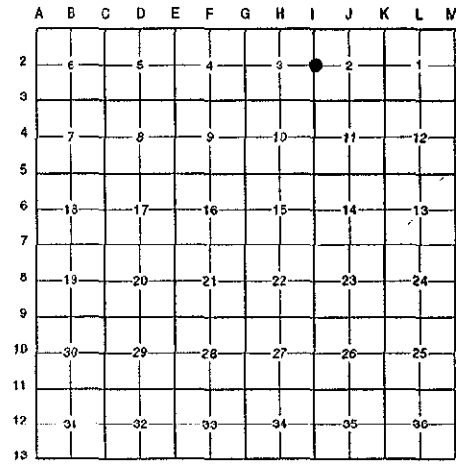
STATE OF MICHIGAN
 COUNTY OF KENT
 RECEIVED FOR RECORD
 97 OCT 15 AM 8:47
 REG. OF DEEDS
Eric J. Sand

10127

Register of Deeds Stamp & File Number

4. Lot No. _____, Recorded Plat _____
 5. Private Claims _____

I, Randy Kolehouse, in a field survey on June 24 19 97, do hereby certify that under requirements of P.A. 74 Michigan P.A. of 1970, the corner points mentioned in lines 1 and 2 above were in conformance with regulations and rules therefore as required in the current manual of survey instructions of the United States Department of the interior, Bureau of Land Management or by a decree of a Court of Law and/or that the corner points mentioned in lines 3, 4 and 5 above were in conformance with the rules of the Michigan Board of Land Surveyors or by a Decree of a Court of Law; established, re-established, monumented, re-monumented, recovered, found as expressed below:



NOTE: Not more than 4 corners, all in the same town and range, may be recorded on this certificate.

A. Description of original monument and accessories and/or subsequent restoration:

I-2	1831	G.L.O. Notes	Mullett	Set Post	
	N/A	Witness Map	K.C. Surveyor	Fence Post	P.A. 345 1990 KENT COUNTY
	1971	L.C.R.C. #93	Williams & Works	1" Iron in Mon. Box	PEER APPROVED 6/26/97
	1972	L.C.R.C. #331	Williams & Works	3/4" Iron in Mon. Box	CHAIRMAN <i>Randy Kolehouse</i>
	1978	L.C.R.C. #1239	G. Hackbardt	3/4" Iron in Mon. Box	
	1981	L.C.R.C. #2418	Jonker Land Surveys	Fnd. 3/4" x 36" Iron in Mon. Box / Set K.C. Monument in Mon. Box	
	1989	L.C.R.C. #5251	J. Bueche	K.C. Monument in Mon. Box	

This corner was originally approved by the Kent County Remonumentation Peer Group and monumented by Rob Jonker on 11/24/81 and was recorded per L.C.R.C. #2418.

B. Description of corner evidence found and/or method applied in restoring or reestablishing corner:

I-2 Found a Standard Kent County Monument at the C/L intersection of Young Avenue (bit.) running North and South and Bush Road (gravel) running West per L.C.R.C.'s #2418 and #5251 as set by Rob Jonker in place of a 3/4" x 36" iron he found in a monument box which checked L.C.R.C.'s #1239, #331, #93 and the K.C. Surveyor's records.

L.C.R.C. #2418

Remon. tag on SW side p. pole N49°W 128.3'
 NE corner conc. H/W S16°E 60.75'
 Vertical cut on W end conc. road culv. S24°W 61.10'
 C/L stop sign S72°W 47.0'
 Remon. tag on W side p. pole N25°E 132.8'

L.C.R.C. #5251

Remon. tag & nail on SW side p. pole N 40° W 128.3' (m. 128.35')
 NE corner conc. H/W S 16° E 60.75'
 Vertical cut on W end conc. road culvert S 24° W 61.82'
 C/L stop sign S 72° W 47.0'
 Remon. tag & nail on W side p. pole N 25° E 132.8'

The selected location is accepted by me and is generally accepted by professional surveyors as the best available evidence of the position of the original corner.

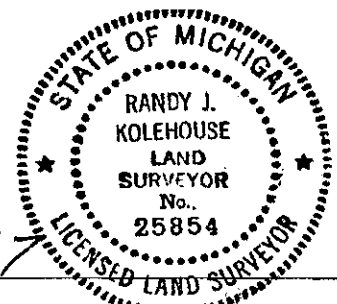
C. Description of monument for corner and accessories established to perpetuate locating the position of the corner:

I-2 Standard Kent County Monument

Nail & K.C. remon. tag on SW side P. pole N 49° W 128.35'
 NE cor. conc. headwall S 16° E 60.75'
 Vertical cut on W end conc. culvert S 24° W 61.82'
 Nail & K.C. remon. tag on W side P. pole N 25° E 132.80'

Signed by *Randy J. Kolehouse*
 EARTH TECH

Date 8/12/97



Surveyor's Michigan License No. 25854