

# SURVEY & REMONUMENTATION

MAR 03 1998

## LAND CORNER RECORDATION CERTIFICATE Filing Requirement of Act 74, Mich. P.A. 1970 KENT COUNTY REMONUMENTATION

For corners in **SECTION**  
Kent  
(County)

	Located in: Cannon Township	Corner Code #	
1. Public Land Survey	T <u>8N</u> R <u>10W</u>	<u>I-4</u>	
	T _____ R _____	_____	_____
	T _____ R _____	_____	_____
	T _____ R _____	_____	_____
2. Property Controlling in Section	S _____ T _____ R _____	_____	_____
	S _____ T _____ R _____	_____	_____
3. Miscellaneous Property in Sec.	S _____ T _____ R _____	_____	_____
	S _____ T _____ R _____	_____	_____

STATE OF MICHIGAN  
 COUNTY OF KENT  
 RECEIVED FOR RECORD  
 97 OCT 15 AM 8:47  
 REG. OF DEEDS  
*Lucy Stand*

10129

Register of Deeds Stamp & File Number

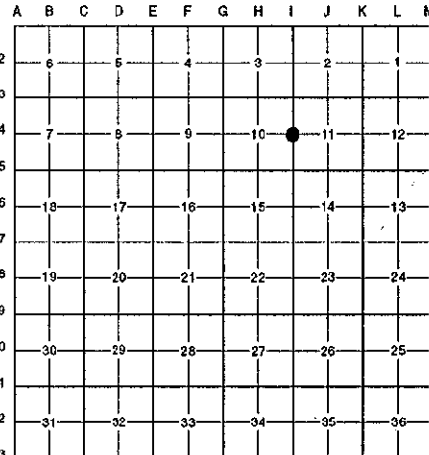
4. Lot No. \_\_\_\_\_, Recorded Plat \_\_\_\_\_  
 5. Private Claims \_\_\_\_\_

I, Randy Kolehouse, in a field survey on June 24 19 97, do hereby certify that under requirements of P.A. 74 Michigan P.A. of 1970, the corner points mentioned in lines 1 and 2 above were in conformance with regulations and rules therefore as required in the current manual of survey instructions of the United States Department of the interior, Bureau of Land Management or by a decree of a Court of Law and/or that the corner points mentioned in lines 3, 4 and 5 above were in conformance with the rules of the Michigan Board of Land Surveyors or by a Decree of a Court of Law; established, re-established, monumented, re-monumented, recovered, found as expressed below:

**NOTE: Not more than 4 corners, all in the same town and range, may be recorded on this certificate.**

**A. Description of original monument and accessories and/or subsequent restoration:**

I-4	1831 G.L.O. Notes	Mullett	Set Post	
	N/A Witness Map	K.C. Surveyor	Iron	
	1973 L.C.R.C. #384	Williams & Works	1-1/2" Iron	
	1981 L.C.R.C. #2416	Jonker Land Surveys	Fnd. 1" Iron / Set K.C. Monument	
	1989 L.C.R.C. #5253	J. Bueche	K.C. Monument	



P.A. 345 1990 KENT COUNTY  
 PEER APPROVED 6/26/97  
 CHAIRMAN Randy Kolehouse

This corner was originally approved by the Kent County Remonumentation Peer Group and monumented by Rob Jonker on 11/30/81 and was recorded per L.C.R.C. #2416.

**B. Description of corner evidence found and/or method applied in restoring or reestablishing corner:**

I-4 Found a Standard Kent County Monument (1' ± below grade) 11' West of the C/L intersection of Young Avenue (bit.) running North and South and Eldred Road (bit.) running East per L.C.R.C.'s #2416 and #5253 as set by Rob Jonker in place of a 1" iron he found which checked L.C.R.C. #384 and the K.C. Surveyor's records.

L.C.R.C. #2416

Remon. tag on W side 10" Walnut N36°E 73.78'  
 Remon. tag on SE side p. pole S26°W 61.70'  
 Remon. tag on NW side 24" Willow S58°W 60.22'  
 Face of steel fence post at base N56°E 55.28'

L.C.R.C. #5253

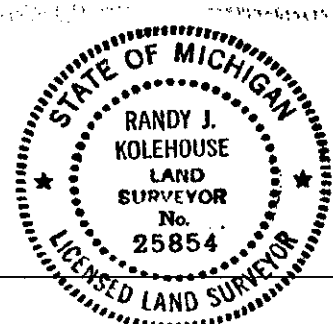
Remon. tag & nail on W side 12" Walnut N 36° E 73.40'  
 Remon. tag & nail on SE side p. pole S 28° W 61.70'  
 Remon. tag & nail on NW side 28" Willow S 58° W 59.62'  
 Face of steel fence post at base N 56° E 55.28'

The selected location is accepted by me and is generally accepted by professional surveyors as the best available evidence of the position of the original corner.

**C. Description of monument for corner and accessories established to perpetuate locating the position of the corner:**

I-4 Standard Kent County Monument

Nail & K.C. remon. tag on W side 12" Walnut N 36° E 73.40'  
 Nail & K.C. remon. tag on SE side P. pole S 26° W 61.70'  
 Nail & K.C. remon. tag on NW side 28" Willow S 58° W 59.62'  
 Face of steel fence post N 56° E 55.28'



Signed by *Randy J. Kolehouse*

Date 8/12/97

Surveyor's Michigan License No. 25854