

**MAR 03 1998**

**SECTION**

**LAND CORNER RECORDATION CERTIFICATE**  
**Filing Requirement of Act 74, Mich. P.A. 1970**  
**KENT COUNTY REMONUMENTATION**

For corners in

Kent (County)	Located in: Cannon Township	Corner Code #
1. Public Land Survey	T <u>8N</u> R <u>10W</u>	<u>I-5</u>
	T _____ R _____	_____
	T _____ R _____	_____
	T _____ R _____	_____
2. Property Controlling in Section	S _____ T _____ R _____	_____
	S _____ T _____ R _____	_____
3. Miscellaneous Property in Sec.	S _____ T _____ R _____	_____
	S _____ T _____ R _____	_____

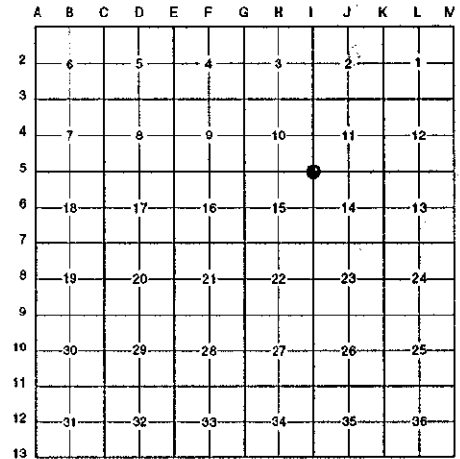
STATE OF MICHIGAN  
 COUNTY OF KENT  
 RECEIVED FOR RECORD  
 97 OCT 15 AM 8:47  
 REG. OF DEEDS  
*Barry Stuber*

**10130**

Register of Deeds Stamp & File Number

4. Lot No. \_\_\_\_\_, Recorded Plat \_\_\_\_\_  
 5. Private Claims \_\_\_\_\_

I, Randy Kolehouse, in a field survey on June 19 19 97, do hereby certify that under requirements of P.A. 74 Michigan P.A. of 1970, the corner points mentioned in lines 1 and 2 above were in conformance with regulations and rules therefore as required in the current manual of survey instructions of the United States Department of the Interior, Bureau of Land Management or by a decree of a Court of Law and/or that the corner points mentioned in lines 3, 4 and 5 above were in conformance with the rules of the Michigan Board of Land Surveyors or by a Decree of a Court of Law; established, re-established, monumented, re-monumented, recovered, found as expressed below:



**NOTE: Not more than 4 corners, all in the same town and range, may be recorded on this certificate.**

**A. Description of original monument and accessories and/or subsequent restoration:**

I-5	1831	G.L.O. Notes	Mullett	Set Post
	1930	Witness Map	K.C. Surveyor	1" Iron
	1972	L.C.R.C. #3305	Glaza & Associates	N/A
	1983j	L.C.R.C. #3490	J. Bueche	Fnd. Iron in Mon. Box / Set K.C. Monument in Mon. Box
	1989	L.C.R.C. #5254	J. Bueche	K.C. Monument

This corner was originally approved by the Kent County Remonumentation Peer Group and monumented by J. Bueche on 6/27/83 and was recorded per L.C.R.C. #3490.

**B. Description of corner evidence found and/or method applied in restoring or reestablishing corner:**

I-5 Found a Standard Kent County Monument in a monument box 3' South of the C/L intersection of Young Avenue (bit.) running North and Belding Road (bit.) running East and West per L.C.R.C.'s #3490 and #5254 as set by J. Bueche in place of an iron he found in a monument which checked L.C.R.C. #3305 and the K.C. Surveyor's records.

L.C.R.C. #3490

L.C.R.C. #5254

K.C. Remon. tag & nail S side (3' above ground)  
 24" Oak N 70° E 101.93'  
 S.W. cor. brick of school N 30° E 168.62'  
 X cut in S. end conc. culvert S 65° W 76.15'

Remon. tag & nail S side (3' above ground) 26" Oak N 70° E 101.74  
 SW cor brick of school N 30° E 168.62'  
 X cut in S end conc culvert S 65° W 76.15'

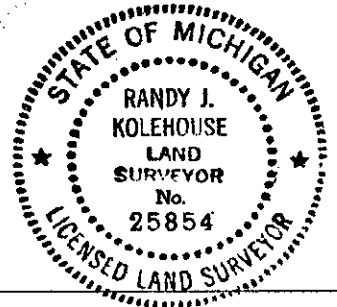
P.A. 345 1990 KENT COUNTY  
 PEER APPROVED 6/26/97  
 CHAIRMAN Barry Stuber

The selected location is accepted by me and is generally accepted by professional surveyors as the best available evidence of the position of the original corner.

**C. Description of monument for corner and accessories established to perpetuate locating the position of the corner:**

I-5 Standard Kent County Monument in a Monument Box

Nail & K.C. remon. tag on S side 26" Oak N 70° E 101.74'  
 Nail & K.C. remon. tag on E side P. pole S 00° W 48.86'  
 SW cor. brick to school N 30° E 168.62'  
 "X" cut on South end conc. culvert S 65° W 76.15'



Signed by Randy J. Kolehouse  
 EARTH TECH

Date 8/12/97

Surveyor's Michigan License No. 25854