

**SURVEY & REMONUMENTATION**

MAR 03 1998

\$7.00  
\$2.00

**SECTION**

**LAND CORNER RECORDATION CERTIFICATE**  
Filing Requirement of Act 74, Mich. P.A. 1970  
KENT COUNTY REMONUMENTATION

For corners in

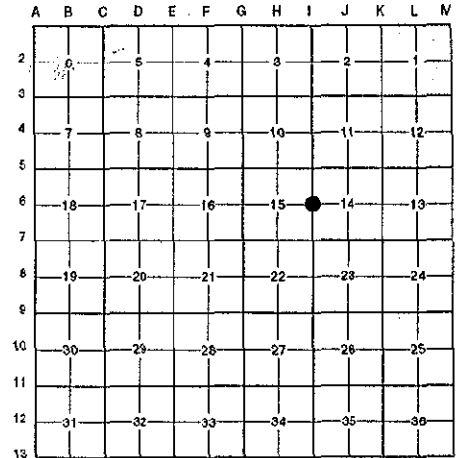
Kent (County)	Located in: Cannon Township	Corner Code #
1. Public Land Survey	T <u>8N</u> R <u>10W</u>	<u>I-6</u>
	T _____ R _____	_____
	T _____ R _____	_____
	T _____ R _____	_____
2. Property Controlling in Section	S _____ T _____ R _____	_____
	S _____ T _____ R _____	_____
3. Miscellaneous Property in Sec.	S _____ T _____ R _____	_____
	S _____ T _____ R _____	_____

REG. OF DEEDS  
*Luis Bond*  
97 NOV 14 AM 9:02  
STATE OF MICHIGAN  
COUNTY OF KENT  
RECEIVED FOR RECORD

**10340**  
Register of Deeds Stamp & File Number

4. Lot No. \_\_\_\_\_, Recorded Plat \_\_\_\_\_  
5. Private Claims \_\_\_\_\_

I, Randy Kolehouse, in a field survey on August 18 19 97, do hereby certify that under requirements of P.A. 74 Michigan P.A. of 1970, the corner points mentioned in lines 1 and 2 above were in conformance with regulations and rules therefore as required in the current manual of survey instructions of the United States Department of the interior, Bureau of Land Management or by a decree of a Court of Law and/or that the corner points mentioned in lines 3, 4 and 5 above were in conformance with the rules of the Michigan Board of Land Surveyors or by a Decree of a Court of Law; established, re-established, monumented, re-monumented, recovered, found as expressed below:



**NOTE: Not more than 4 corners, all in the same town and range, may be recorded on this certificate.**

**A. Description of original monument and accessories and/or subsequent restoration:**

I-6	1831	G.L.O. Notes	Mullett	Set Post
	N/A	Witness Map	K.C. Surveyor	Iron
	1983	L.C.R.C. #3488	J. Bueche	Fnd. Iron / Set K.C. Monument
	1989	L.C.R.C. #5255	J. Bueche	K.C. Monument

P.A. 345 1990 KENT COUNTY  
PEER APPROVED 8/28/97  
*Harry Huber*  
CHAIRMAN

This corner was originally approved by the Kent County Remonumentation Peer Group and monumented by J. Bueche on 7/25/83 and was recorded per L.C.R.C. #3488.

**B. Description of corner evidence found and/or method applied in restoring or reestablishing corner:**

I-6 Found a Standard Kent County Monument at the intersection of fence lines running North-South and East-West per L.C.R.C.'s #3488 and #5255 as set by J. Bueche in place of an iron he found with stones around it which checked the K.C. Surveyor's records.

L.C.R.C. #3488

L.C.R.C. #5255

- Cut nail in S. side dbl. 36" - 24" Oak S 80° E 6.76'
- Cut nail in S. side 12" Sassa N 80° W 25.65'
- K.C. Remon. tag & nail E. side 14" Oak N 00° E 39.55'
- K.C. Remon. tag & nail N.W. side 5 - 6" to 8" Maples N 50° E 57.05'
- K.C. Remon. tag & nail N.E. side 4" Oak S 30° E 40.28'
- K.C. Remon. tag & nail N.W. side 5" Oak S 30° W 28.50'

- Remon. tag & nail in S side dbl. 40" - 28" Oak S 80° E 6.80'
- Remon. tag & nail in S side 14" Sassa N 80° W 25.45'
- Remon. tag & nail E side 16" Oak 00° E 39.55'
- Remon. tag & nail NW side 5 - 6" to 10" Maples N 50° E 57.05'
- Remon. tag & nail NE side 6" Oak S 30° E 40.28'
- Remon. tag & nail NW side 8" Oak S 30° W 28.50'

The selected location is accepted by me and is generally accepted by professional surveyors as the best available evidence of the position of the original corner.

**C. Description of monument for corner and accessories established to perpetuate locating the position of the corner:**

I-6 Standard Kent County Monument

- Nail & K.C. remon. tag on S side dbl. 40"-28" Oak S 80° E 6.80'
- Nail & K.C. remon. tag on S side 14" Sassafras N 80° W 25.45'
- Nail & K.C. remon. tag on E side 16" Oak 00° E 39.55'
- Nail & K.C. remon. tag on NW side 5 - 6"-10" Maples N 50° E 57.05'
- Nail & K.C. remon. tag on NE side 6" Oak S 30° E 40.28'
- Nail & K.C. remon. tag on NW side 8" Oak S 30° W 28.50'

Signed by *Randy J Kolehouse* Date 9/23/97

EARTH TECH

Surveyor's Michigan License No. 25854

