

**SURVEY & REMONUMENTATION**

MAR 03 1998

\$7.00  
\$2.00

**LAND CORNER RECORDATION CERTIFICATE**  
Filing Requirement of Act 74, Mich. P.A. 1970  
KENT COUNTY REMONUMENTATION

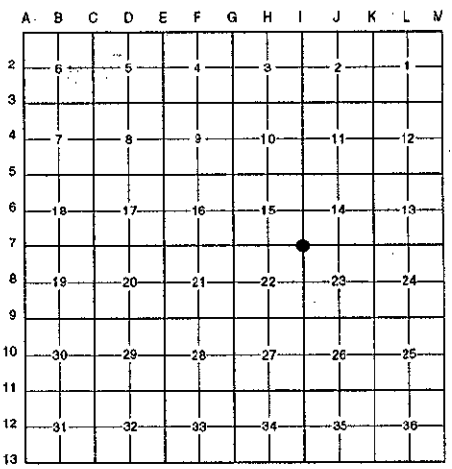
For corners in **SECTION**

Kent (County)	Located in: Cannon Township	Corner Code #
1. Public Land Survey	T <u>8N</u> R <u>10W</u>	<u>I-7</u>
	T _____ R _____	_____
	T _____ R _____	_____
	T _____ R _____	_____
2. Property Controlling in Section	S _____ T _____ R _____	_____
	S _____ T _____ R _____	_____
3. Miscellaneous Property in Sec.	S _____ T _____ R _____	_____
	S _____ T _____ R _____	_____

STATE OF MICHIGAN  
COUNTY OF KENT  
RECEIVED FOR RECORDING  
97 DEC 15 AM 10:44  
REG. OF DEEDS  
*David Standa*  
**10407**  
Register of Deeds Stamp & File Number

4. Lot No. \_\_\_\_\_, Recorded Plat \_\_\_\_\_  
5. Private Claims \_\_\_\_\_

I, Randy Kolehouse, in a field survey on November 4 19 97, do hereby certify that under requirements of P.A. 74 Michigan P.A. of 1970, the corner points mentioned in lines 1 and 2 above were in conformance with regulations and rules therefore as required in the current manual of survey instructions of the United States Department of the interior, Bureau of Land Management or by a decree of a Court of Law and/or that the corner points mentioned in lines 3, 4 and 5 above were in conformance with the rules of the Michigan Board of Land Surveyors or by a Decree of a Court of law; established, re-established, monumented, re-monumented, recovered, found as expressed below:



**NOTE: Not more than 4 corners, all in the same town and range, may be recorded on this certificate.**

**A. Description of original monument and accessories and/or subsequent restoration:**

I-7	1831	G.L.O. Notes	Mullett	Set Post
	N/A	Witness Map	K.C. Surveyor	Iron
	1978	L.C.R.C. #1172	Williams & Works	"T" Iron
	1981	L.C.R.C. #2415	Jonker Land Surveys	Find "T" Iron / Set K.C. Monument
	1989	L.C.R.C. #5256	J. Bueche	K.C. Monument

This corner was originally approved by the Kent County Remonumentation Peer Group and monumented by Rob Jonker on 12/5/81 and was recorded per L.C.R.C. #2415.

**B. Description of corner evidence found and/or method applied in restoring or reestablishing corner:**

I-7 Reset a Standard Kent County Monument 5' ± South of the South edge of pond, 30' ± West of the East edge of pond, and 12' ± North of the C/L of berm. Reset monument per witnesses found in L.C.R.C.'s #2415 and #5256 which checked L.C.R.C. #1172 and the K.C. Surveyor's records.

**L.C.R.C. #2415**

- Remon. tag on top of 12" stump N 80° W 31.0'
- Remon. tag on SE side of 8" Willow S 30° W 26.28'
- Remon. tag on S side 8" Oak N 90° E 75.70'
- Remon. tag on SW side 10" Poplar S 64° E 45.22'

**L.C.R.C. #5256**

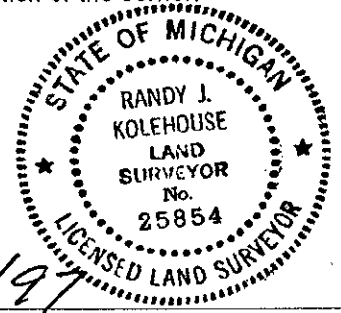
- Remon. tag & nail on top of 12" stump N 80° W 31.08'
- Remon. tag & nail on S side 12" Oak N 90° E 75.70'
- Remon. tag & nail on SW side 14" Poplar S 64° E 45.29'
- S. edge pond N 6' ±
- E. edge pond E 30' ±

P.A. 345 1990 KENT COUNTY  
PEER APPROVED 11/20/97  
CHAIRMAN Harry Fisher

The selected location is accepted by me and is generally accepted by professional surveyors as the best available evidence of the position of the original corner.

**C. Description of monument for corner and accessories established to perpetuate locating the position of the corner:**

- I-7 Reset a Standard Kent County Monument
- Nail & K.C. remon. tag on S side 9" W. Oak S 86° E 75.68'
  - Nail & K.C. remon. tag on SW side 24" Aspen S 60° E 45.31'
  - Nail & K.C. remon. tag on ground next to 16" stump N 77° W 31.4' ±
  - Nail & K.C. remon. tag on S side 14" Aspen S 84° W 76.08'
  - Nail & K.C. remon. tag on E side 18" Aspen N 14° E 101.50'



Signed by Randy J. Kolehouse Date 12/5/97  
EARTH TECH  
Surveyor's Michigan License No. 25854