

SURVEY & REMONUMENTATION

\$7.00
\$2.00 MAR 03 1998

SECTION

LAND CORNER RECORDATION CERTIFICATE
Filing Requirement of Act 74, Mich. P.A. 1970
KENT COUNTY REMONUMENTATION

For corners in

Kent (County)	Located in: Cannon Township	Corner Code #
1. Public Land Survey	T <u>8N</u> R <u>10W</u>	<u>I-8</u>
	T _____ R _____	_____
	T _____ R _____	_____
	T _____ R _____	_____
2. Property Controlling in Section	S _____ T _____ R _____	_____
	S _____ T _____ R _____	_____
3. Miscellaneous Property in Sec.	S _____ T _____ R _____	_____
	S _____ T _____ R _____	_____

4. Lot No. _____, Recorded Plat _____
5. Private Claims _____

STATE OF MICHIGAN
COUNTY OF KENT
RECEIVED FOR RECORD
97 NOV 14 AM 9:02
REG. OF DEEDS
Lucy Spaul

10341

Register of Deeds Stamp & File Number

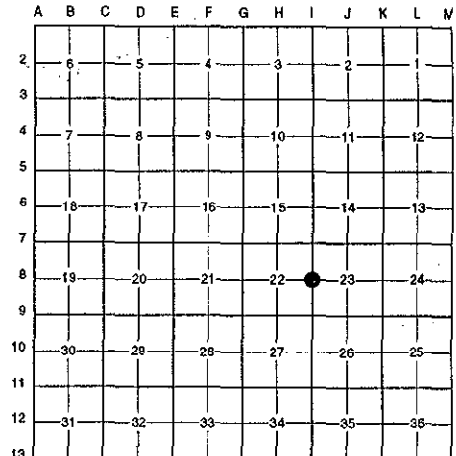
I, Randy Kolehouse, in a field survey on August 18 19 97, do hereby certify that under requirements of P.A. 74 Michigan P.A. of 1970, the corner points mentioned in lines 1 and 2 above were in conformance with regulations and rules therefore as required in the current manual of survey instructions of the United States Department of the interior, Bureau of Land Management or by a decree of a Court of Law and/or that the corner points mentioned in lines 3, 4 and 5 above were in conformance with the rules of the Michigan Board of Land Surveyors or by a Decree of a Court of Law; established, re-established, monumented, re-monumented, recovered, found as expressed below:

NOTE: Not more than 4 corners, all in the same town and range, may be recorded on this certificate.

A. Description of original monument and accessories and/or subsequent restoration:

I-8	Description	Location	Monument
1831	G.L.O. Notes	Mullett	Set Post
1935	Witness Map	K.C. Surveyor	1" Iron
1978	L.C.R.C. #1130	Williams & Works	1" Iron
1981	L.C.R.C. #2414	Jonker Land Surveys	Fnd 1" Iron / Set K.C. Monument
1989	L.C.R.C. #5257	J. Bueche	K.C. Monument

P.A. 345 1990 KENT COUNTY
PEER APPROVED 9/28/97
CHAIRMAN [Signature]



This corner was originally approved by the Kent County Remonumentation Peer Group and monumented by Rob Jonker on 12/5/81 and was recorded per L.C.R.C. #2414.

B. Description of corner evidence found and/or method applied in restoring or reestablishing corner:
I-8 Found a Standard Kent County Monument on the C/L of the dirt trail running East and West, 1,300' ± West of the C/L of Ramsdell Road (bit.) running North and South, on line of a fence row running North, and 25' North of a fence row running East and West per L.C.R.C.'s #2414 and #5257 as set by Rob Jonker in place of a 1" iron he found over a 8" x 12" x 16" pointed stone 24" below grade which checked L.C.R.C. #1130 and the K.C. Surveyor's records.

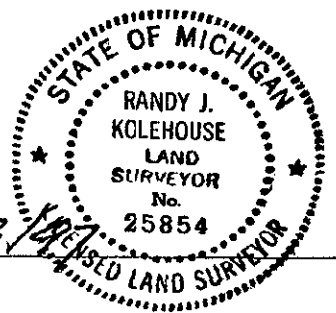
L.C.R.C. #2414
Remon. tg on S side tw. 16" Oak N81°W 41.00'
Remon. tag on E side 10" Oak N13°W 6.71'
Remon. tag on E side 16" Oak S18°E 26.70'
Remon. tag on NW side 12" Oak S45°W 36.78'
Remon. tag on N side 10" Oak N74°E 35.3'

L.C.R.C. #5257
Cut nail on S side Tw. 20" Oak N 81° W 40.98'
Remon. tag & nail on E side 12" Oak N 13° W 6.65'
Remon. tag & nail on E side 18" Oak S 18° E 26.70'
Remon. tag & nail on NW side 16" Oak S 45° W 36.72'
Remon. tag & nail on N side 14" Oak N 74° E 35.28'

The selected location is accepted by me and is generally accepted by professional surveyors as the best available evidence of the position of the original corner.

C. Description of monument for corner and accessories established to perpetuate locating the position of the corner:
I-8 Standard Kent County Monument
Nail & K.C. remon. tag on E side 12" Oak N 13° W 6.65'
Nail & K.C. remon. tag on E side 18" Oak S 18° E 26.70'
Nail & K.C. remon. tag on NW side 16" Oak S 45° W 36.72'
Nail & K.C. remon. tag on N side 14" Oak N 74° E 35.28'

Signed by *Randy J. Kolehouse* Date 9/23/97
EARTH TECH



Surveyor's Michigan License No. 25854