

**SURVEY & REMONUMENTATION**

**MAR 03 1998**

**SECTION**

**LAND CORNER RECORDATION CERTIFICATE**  
**Filing Requirement of Act 74, Mich. P.A. 1970**  
**KENT COUNTY REMONUMENTATION**

For corners in

| Kent<br>(County)                      | Located in: Cannon<br>Township | Corner Code # |
|---------------------------------------|--------------------------------|---------------|
| 1. Public Land Survey                 | T <u>8N</u> R <u>10W</u>       | <u>I-12</u>   |
|                                       | T _____ R _____                | _____         |
|                                       | T _____ R _____                | _____         |
|                                       | T _____ R _____                | _____         |
| 2. Property Controlling<br>in Section | S _____ T _____ R _____        | _____         |
|                                       | S _____ T _____ R _____        | _____         |
| 3. Miscellaneous<br>Property in Sec.  | S _____ T _____ R _____        | _____         |
|                                       | S _____ T _____ R _____        | _____         |

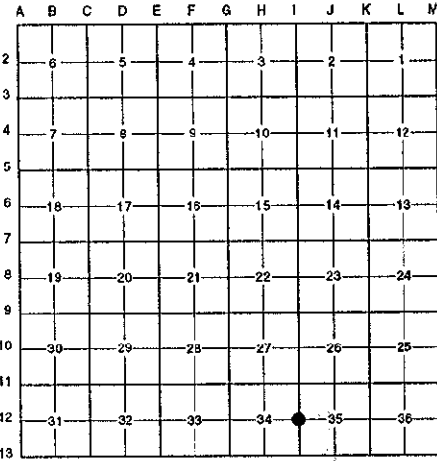
STATE OF MICHIGAN  
 COUNTY OF KENT  
 RECEIVED FOR RECORD  
 97 OCT 15 AM 8:47  
 REG. OF DEEDS  
*Eric J. Bond*

**10133**

Register of Deeds Stamp & File Number

4. Lot No. \_\_\_\_\_, Recorded Plat \_\_\_\_\_  
 5. Private Claims \_\_\_\_\_

I, Randy Kolehouse, in a field survey on June 19 19 97, do hereby certify that under requirements of P.A. 74 Michigan P.A. of 1970, the corner points mentioned in lines 1 and 2 above were in conformance with regulations and rules therefore as required in the current manual of survey instructions of the United States Department of the interior, Bureau of Land Management or by a decree of a Court of Law and/or that the corner points mentioned in lines 3, 4 and 5 above were in conformance with the rules of the Michigan Board of Land Surveyors or by a Decree of a Court of Law; established, re-established, monumented, re-monumented, recovered, found as expressed below:



**NOTE: Not more than 4 corners, all in the same town and range, may be recorded on this certificate.**

**A. Description of original monument and accessories and/or subsequent restoration:**

|      |      |                |                             |                                    |
|------|------|----------------|-----------------------------|------------------------------------|
| I-12 | 1831 | G.L.O. Notes   | Mullett                     | Set Post                           |
|      | 1944 | Witness Map    | K.C. Surveyor               | Iron Pipe                          |
|      | 1972 | L.C.R.C. #156  | Medema, Van Kooten & Assoc. | 3/4" Iron                          |
|      | 1978 | L.C.R.C. #1221 | William Byl                 | Iron Pipe in Monument Box          |
|      | 1981 | L.C.R.C. #2437 | Jonker Land Surveys         | Fnd. 1/2" Iron / Set K.C. Monument |
|      | 1989 | L.C.R.C. #5261 | J. Bueche                   | K.C. Monument                      |

P.A. 345 1990 KENT COUNTY  
 PEER APPROVED 6/16/97  
 CHAIRMAN *Randy Kolehouse*

This corner was originally approved by the Kent County Remonumentation Peer Group and monumented by Rob Jonker on 12/12/81 and was recorded per L.C.R.C. #2437.

**B. Description of corner evidence found and/or method applied in restoring or reestablishing corner:**

I-12 Found a Standard Kent County Monument on the C/L of Honey Creek Avenue (bit.) running North and South on line of North line of bituminous drive to Skyhawk Meadows (bit.) running West per L.C.R.C.'s #2437 and #5261 as set by Rob Jonker in place of a 1/2" iron he found at grade over a 3" x 30" iron pipe 10" below grade which checked L.C.R.C.'s #1221, #156 and the K.C. Surveyor's records.

**L.C.R.C. #2437**

Remon. tag on S side 10" tw. Hickory N79°W 32.45'  
 Remon. tag on SW side 9" Walnut N29°W 58.34'  
 Remon. tag on E side 18" Hickory S37°W 59.69'  
 SW corner house fnd. S46°E 86.85'  
 NW corner house fnd. S69°E 68.97'

**L.C.R.C. #5261**

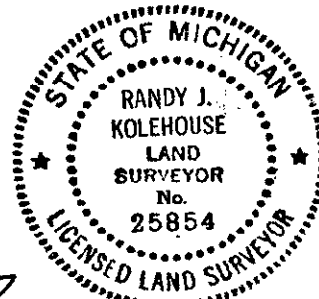
Remon. tag & nail on S side 14" Tw. Hickory N 79° W 32.43'  
 Remon. tag & nail on SW side 12" Walnut N 29° W 58.33'  
 Remon. tag & nail on E side 24" Hickory S 37° W 59.61'  
 SW corner house fnd. S 46° E 86.85'  
 NW corner house fnd. S 69° E 68.97'

The selected location is accepted by me and is generally accepted by professional surveyors as the best available evidence of the position of the original corner.

**C. Description of monument for corner and accessories established to perpetuate locating the position of the corner:**

I-12 Standard Kent County Monument

Nail & K.C. remon. tag on S side 14" Twin Hickory N 79° W 32.43'  
 Nail & K.C. remon. tag on SW side 12" Walnut N 29° W 58.33'  
 Nail & K.C. remon. tag on E side 24" Hickory S 37° W 59.61'  
 SW cor. hse. fndn. (Hse. 3832) S 46° E 86.85'  
 NW cor. hse. fndn. (Hse. 3832) S 69° E 68.97'



Signed by *Randy J. Kolehouse* Date 8/12/97

Surveyor's Michigan License No. 25854