

**SURVEY & REMONUMENTATION**

MAR 03 1998

**SECTION**

**LAND CORNER RECORDATION CERTIFICATE**  
**Filing Requirement of Act 74, Mich. P.A. 1970**  
**KENT COUNTY REMONUMENTATION**

For corners in

Kent (County)	Located in: Cannon Township	Corner Code #
1. Public Land Survey	T <u>8N</u> R <u>10W</u>	<u>J-3</u>
	T _____ R _____	_____
	T _____ R _____	_____
	T _____ R _____	_____
2. Property Controlling in Section	S _____ T _____ R _____	_____
	S _____ T _____ R _____	_____
3. Miscellaneous Property in Sec.	S _____ T _____ R _____	_____
	S _____ T _____ R _____	_____
4. Lot No. _____, Recorded Plat _____		
5. Private Claims _____		

REG. OF DEEDS

*Eric Bond*

97 OCT 15 AM 8:47

STATE OF MICHIGAN  
 COUNTY OF KENT  
 RECEIVED FOR RECORD

**10136**

Register of Deeds Stamp & File Number

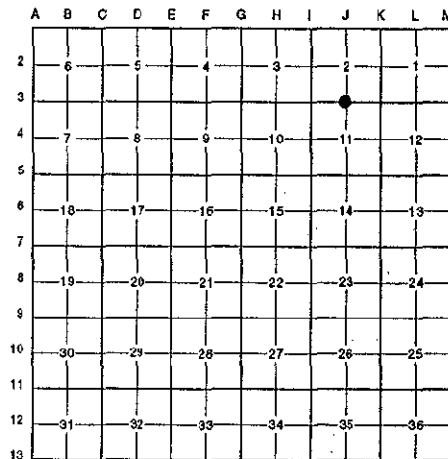
I, Randy Kolehouse, in a field survey on June 25 19 97, do hereby certify that under requirements of P.A. 74 Michigan P.A. of 1970, the corner points mentioned in lines 1 and 2 above were in conformance with regulations and rules therefore as required in the current manual of survey instructions of the United States Department of the interior, Bureau of Land Management or by a decree of a Court of Law and/or that the corner points mentioned in lines 3, 4 and 5 above were in conformance with the rules of the Michigan Board of Land Surveyors or by a Decree of a Court of Law; established, re-established, monumented, re-monumented, recovered, found as expressed below:

**NOTE: Not more than 4 corners, all in the same town and range, may be recorded on this certificate.**

**A. Description of original monument and accessories and/or subsequent restoration:**

J-3	1831	G.L.O. Notes	Mullett	Set Post
	1947	Witness Map	K.C. Surveyor	1-1/2" Iron Pipe
	1971	L.C.R.C. #93	Williams & Works	1" Iron
	1981	L.C.R.C. #2438	Jonker Land Surveys	Fnd. 5/8" CP Spike / Set K.C. Monument
	1989	L.C.R.C. #5263	J. Bueche	K.C. Monument

P.A. 345 1990 KENT COUNTY  
 PEER APPROVED 7/24/97  
 CHAIRMAN Tony Huber



This corner was originally approved by the Kent County Remonumentation Peer Group and monumented by Rob Jonker on 12/7/81 and was recorded per L.C.R.C. #2438.

**B. Description of corner evidence found and/or method applied in restoring or reestablishing corner:**

J-3 Found a Standard Kent County Monument on the C/L of 9 Mile Road (bit.) running East and West and 100' ± East of the C/L of Northport Road (bit.) running South per L.C.R.C.'s #2438 and #5263 as set by Rob Jonker in place of a 5/8" Consumers Power Company spike he found at grade over a 1" iron 12" below grade which checked L.C.R.C. #93 and the K.C. Surveyor's records.

L.C.R.C. #2438

Remon. tag on W side 20" Hickory N05°E 60.92'  
 Remon. tag on S side 36" Maple N 83° E 213.09'  
 Remon. tag on N side p. pole S69°E 290.10'

L.C.R.C. #5263

Remon tag & nail on W side 24" Hickory N 05° E 60.92'  
 Remon tag & nail on S side 40" Maple N 83° E 213.02'  
 Remon tag & nail on N side p pole S 69° E 290.10'

The selected location is accepted by me and is generally accepted by professional surveyors as the best available evidence of the position of the original corner.

**C. Description of monument for corner and accessories established to perpetuate locating the position of the corner:**

J-3 Standard Kent County Monument

- Nail & K.C. remon. tag on SE side P. pole S 55° W 161.20'
- Nail & K.C. remon. tag on W side 24" Hickory N 05° E 60.92'
- Nail & K.C. remon. tag on S side 40" Maple N 83° E 213.02'
- Nail & K.C. remon. tag on N side P. pole S 69° E 290.10'

Signed by *Randy J. Kolehouse*

Date 8/12/97

Surveyor's Michigan License No. 25854

