

\$7.00 SURVEY &  
\$2.00 REMONUMENTATION

MAR 03 1998

LAND CORNER RECORDATION CERTIFICATE  
Filing Requirement of Act 74, Mich. P.A. 1970  
KENT COUNTY REMONUMENTATION

For corners in Kent  
(County) SECTION

Located in: Cannon Township Corner Code #

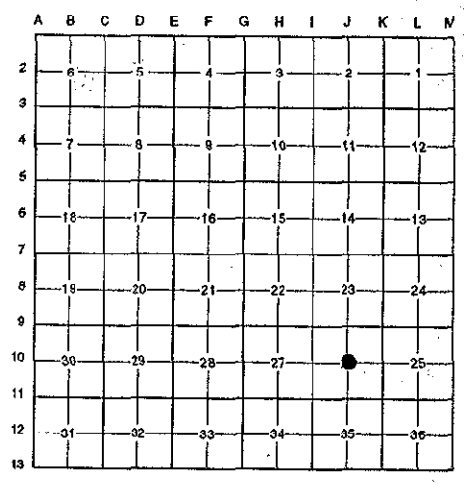
1. Public Land Survey	T <u>8N</u>	R <u>10W</u>	<u>J-10</u>
	T	R	
	T	R	
	T	R	
2. Property Controlling in Section	S	T	R
	S	T	R
3. Miscellaneous Property in Sec.	S	T	R
	S	T	R

STATE OF MICHIGAN  
COUNTY OF KENT  
RECEIVED FOR RECORD  
97 DEC 15 AM 10:44  
REG. OF DEEDS  
*Lucy Bond*

10410

Register of Deeds Stamp & File Number

- 4. Lot No. \_\_\_\_\_, Recorded Plat \_\_\_\_\_
- 5. Private Claims \_\_\_\_\_



I, Randy Kolehouse, in a field survey on June 26 19 97, do hereby certify that under requirements of P.A. 74 Michigan P.A. of 1970, the corner points mentioned in lines 1 and 2 above were in conformance with regulations and rules therefore as required in the current manual of survey instructions of the United States Department of the interior, Bureau of Land Management or by a decree of a Court of Law and/or that the corner points mentioned in lines 3, 4 and 5 above were in conformance with the rules of the Michigan Board of Land Surveyors or by a Decree of a Court of Law; established, re-established, monumented, re-monumented, recovered, found as expressed below:

NOTE: Not more than 4 corners, all in the same town and range, may be recorded on this certificate.

A. Description of original monument and accessories and/or subsequent restoration:

J-10 This corner was not originally set by the G.L.O.  
N/A Witness Map K.C. Surveyor Monument  
1973 L.C.R.C. #595 Exxel Engineering Concrete Monument with 3/4" Solid Bar

P.A. 345 1990 KENT COUNTY  
PEER APPROVED 10/31/97  
CHAIRMAN *Harry Huber*

B. Description of corner evidence found and/or method applied in restoring or reestablishing corner:

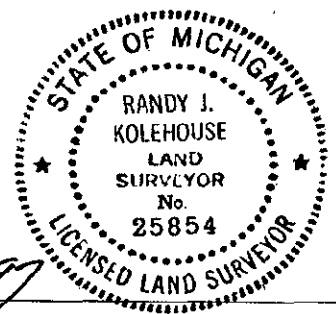
J-10 Found a 3/4" iron pipe in a monument box 2.5' North of the C/L of B.J. Street (bit.) running East, on line of power lines running North, and 10' West of the C/L of a gravel drive to the North per L.C.R.C. #595 and the K.C. Surveyor's records. Pipe is 2.6' North and 5.9' East of the intersection of 1/4 lines. Accepted pipe as Center of Section.

K.C. Witness Map L.C.R.C. #595  
MBT Pole NNW 38.58' PK in side T&P Pole NNW 38.63' (m. 38.85)  
Tri 6" Locust SE 52.9' Nail in side Trip. 10" Locust SE 53.41'

The selected location is accepted by me and is generally accepted by professional surveyors as the best available evidence of the position of the original corner.

C. Description of monument for corner and accessories established to perpetuate locating the position of the corner:

J-10 Replaced 3/4" Iron Pipe with a Standard Kent County Monument in an Existing Monument Box  
Nail & K.C. remon. tag on SE side 6" dia. wood gate post N 15° E 47.10'  
Nail & K.C. remon. tag on NW side T. pole N 03° W 38.85'  
Nail & K.C. remon. tag on E side T. pole S 07° W 31.88'  
Nail & K.C. remon. tag on W side 10" Locust S 10° E 34.00'



Signed by *Randy J. Kolehouse* Date 11/24/97  
EARTH TECH

Surveyor's Michigan License No. 25854