

SURVEY & REMONUMENTATION
 \$7.00
 \$2.00
 MAR 03 1998

LAND CORNER RECORDATION CERTIFICATE
 Filing Requirement of Act 74, Mich. P.A. 1970
 KENT COUNTY REMONUMENTATION

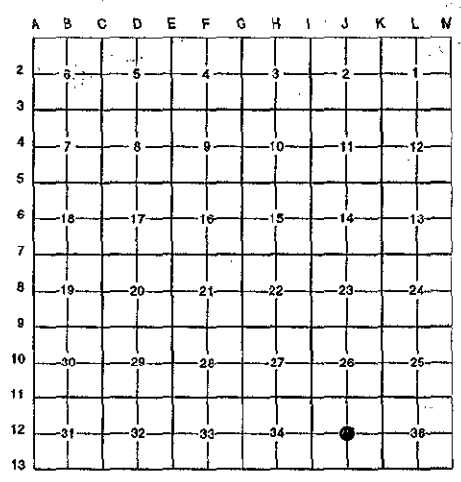
STATE OF MICHIGAN
 COUNTY OF KENT
 RECEIVED FOR RECORD
 97 DEC 15 AM 10:14
 REG. OF DEEDS
Lucy Bond

For corners in

Kent SECTION (County)	Located in: Cannon Township	Corner Code #
1. Public Land Survey	T <u>8N</u> R <u>10W</u>	<u>J-12</u>
	T _____ R _____	_____
	T _____ R _____	_____
	T _____ R _____	_____
2. Property Controlling in Section	S _____ T _____ R _____	_____
	S _____ T _____ R _____	_____
3. Miscellaneous Property in Sec.	S _____ T _____ R _____	_____
	S _____ T _____ R _____	_____
4. Lot No. _____, Recorded Plat _____		
5. Private Claims _____		

10411
 Register of Deeds Stamp & File Number

I, Randy Kolehouse, in a field survey on November 14 19 97, do hereby certify that under requirements of P.A. 74 Michigan P.A. of 1970, the corner points mentioned in lines 1 and 2 above were in conformance with regulations and rules therefore as required in the current manual of survey instructions of the United States Department of the interior, Bureau of Land Management or by a decree of a Court of Law and/or that the corner points mentioned in lines 3, 4 and 5 above were in conformance with the rules of the Michigan Board of Land Surveyors or by a Decree of a Court of Law; established, re-established, monumented, re-monumented, recovered, found as expressed below:



NOTE: Not more than 4 corners, all in the same town and range, may be recorded on this certificate.

A. Description of original monument and accessories and/or subsequent restoration:

J-12 This corner was not originally set by the G.L.O.
 No information on record. Also checked Kent County Surveyor's witness map and found no information pertaining to this corner.

P.A. 345 1990 KENT COUNTY.
 PEER APPROVED 10/30/97
 CHAIRMAN *Randy Huber*

B. Description of corner evidence found and/or method applied in restoring or reestablishing corner:

J-12 Found a Roosien capped iron at the approximate intersection of an old fence remnant running North, South, East and West. No information on record for this iron. Iron is 0.2' North and 0.2' East of the intersection of 1/4 lines. Accepted iron as Center of Section.

The selected location is accepted by me and is generally accepted by professional surveyors as the best available evidence of the position of the original corner.

C. Description of monument for corner and accessories established to perpetuate locating the position of the corner:

- J-12 Replaced Iron with a Standard Kent County Monument
- Nail & K.C. remon. tag on S side 20" Maple N 65° E 24.89'
 - Nail & K.C. remon. tag on N side 24" Maple S 69° E 69.80'
 - Nail & K.C. remon. tag on E side 6" Maple S 10° E 31.00'
 - Nail & K.C. remon. tag on NW side 10" Maple S 80° W 22.69'
 - Nail & K.C. remon. tag on N side 10" Oak N 90° W 93.67'
 - Nail & K.C. remon. tag on NE side 12" Maple N 15° W 12.52'



Signed by *Randy J. Kolehouse* Date 11/28/97
 EARTH TECH

Surveyor's Michigan License No. 25854