

MAR 03 1998

SECTION

LAND CORNER RECORDATION CERTIFICATE  
Filling Requirement of Act 74, Mich. P.A. 1970  
KENT COUNTY REMONUMENTATION

For corners in

Kent (County)	Located in: Cannon Township	Corner Code #
1. Public Land Survey	T <u>8N</u> R <u>10W</u>	<u>K-2</u>
	T _____ R _____	_____
	T _____ R _____	_____
	T _____ R _____	_____
2. Property Controlling in Section	S _____ T _____ R _____	_____
	S _____ T _____ R _____	_____
3. Miscellaneous Property in Sec.	S _____ T _____ R _____	_____
	S _____ T _____ R _____	_____

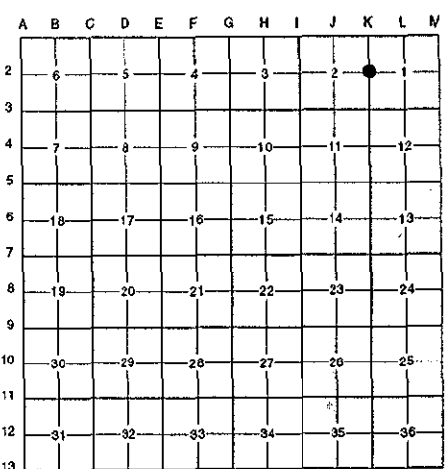
STATE OF MICHIGAN  
COUNTY OF KENT  
RECEIVED FOR RECORD  
97 OCT 15 AM 8:47  
REG. OF DEEDS  
*Eric J. Spand*

10142

Register of Deeds Stamp & File Number

- 4. Lot No. \_\_\_\_\_, Recorded Plat \_\_\_\_\_
- 5. Private Claims \_\_\_\_\_

I, Randy Kolehouse, in a field survey on June 25 19 97, do hereby certify that under requirements of P.A. 74 Michigan P.A. of 1970, the corner points mentioned in lines 1 and 2 above were in conformance with regulations and rules therefore as required in the current manual of survey instructions of the United States Department of the interior, Bureau of Land Management or by a decree of a Court of Law and/or that the corner points mentioned in lines 3, 4 and 5 above were in conformance with the rules of the Michigan Board of Land Surveyors or by a Decree of a Court of Law; established, re-established, monumented, re-monumented, recovered, found as expressed below:



NOTE: Not more than 4 corners, all in the same town and range, may be recorded on this certificate.

A. Description of original monument and accessories and/or subsequent restoration:

K-2	1831	G.L.O. Notes	Mullett	Set Post
	N/A	Witness Map	K.C. Surveyor	Iron
	1971	L.C.R.C. #96	Williams & Works	1" Iron in Mon. Box
	1981	L.C.R.C. #2442	Jonker Land Surveys	Fnd. "T" Iron / Set K.C. Monument
	1989	L.C.R.C. #5269	J. Bueche	K.C. Monument

This corner was originally approved by the Kent County Remonumentation Peer Group and monumented by Rob Jonker on 12/8/81 and was recorded per L.C.R.C. #2442.

B. Description of corner evidence found and/or method applied in restoring or reestablishing corner:  
K-2 Found a Standard Kent County Monument 65' Northerly of the C/L of Ramsdell Road (bit.) running South and East and 25' ± East of a fence line running NNW per L.C.R.C.'s #2442 and #5269 as set by Rob Jonker in place of a "T" iron he found which checked L.C.R.C. #96 and the K.C. Surveyor's records.

L.C.R.C. #2442

L.C.R.C. #5269

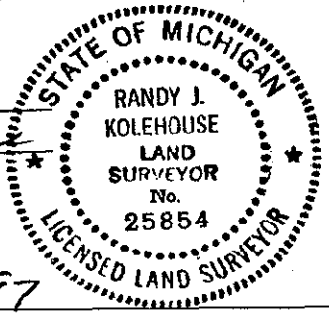
Remon. tag on E side 24" Oak S08°W 51.03'  
Remon. tag on SE side 12" Oak S56°W 16.51'  
Remon. tag on E side 40" Oak N38°W 31.06'  
Remon. tag on N side 9" Oak N74°E 29.15'

Remon tag & nail on E side 28" Oak S 08° W 50.95'  
Remon tag & nail on SE side 14" Oak S 56° W 16.43'  
Remon tag & nail on E side 42" Oak N 38° W 31.03'  
Remon tag & nail on N side 16" Oak N 74° E 29.08'

The selected location is accepted by me and is generally accepted by professional surveyors as the best available evidence of the position of the original corner.

C. Description of monument for corner and accessories established to perpetuate locating the position of the corner:  
K-2 Standard Kent County Monument  
Nail & K.C. remon. tag on E side 28" Oak S 08° W 50.95'  
Nail & K.C. remon. tag on SE side 14" Oak S 56° W 16.43'  
Nail & K.C. remon. tag on E side 42" Oak N 38° W 31.03'  
Nail & K.C. remon. tag on N side 16" Oak N 74° E 29.08'

P.A. 345 1990 KENT COUNTY  
PEER APPROVED 7/29/97  
CHAIRMAN *Randy Kolehouse*



Signed by *Randy J. Kolehouse* Date 8/12/97  
EARTH TECH

Surveyor's Michigan License No. 25854