

**MAR 03 1998**

**LAND CORNER RECORDATION CERTIFICATE**  
**Filing Requirement of Act 74, Mich. P.A. 1970**  
**KENT COUNTY REMONUMENTATION**

**SECTION**

For corners in

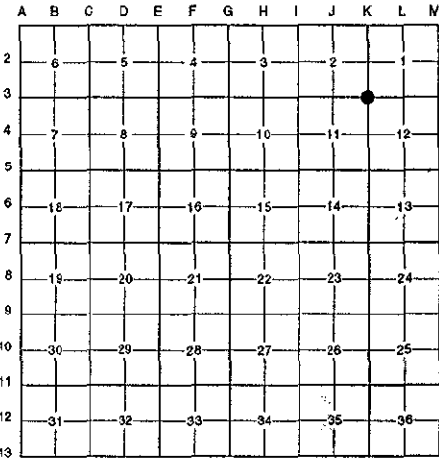
<u>Kent</u> (County)	Located in: Cannon Township	Corner Code # <u>K-3</u>
1. Public Land Survey	T <u>8N</u> R <u>10W</u>	<u>K-3</u>
	T _____ R _____	_____
	T _____ R _____	_____
	T _____ R _____	_____
2. Property Controlling in Section	S _____ T _____ R _____	_____
	S _____ T _____ R _____	_____
3. Miscellaneous Property in Sec.	S _____ T _____ R _____	_____
	S _____ T _____ R _____	_____

STATE OF MICHIGAN  
 COUNTY OF KENT  
 RECEIVED FOR RECORD  
 97 OCT 15 AM 8:47  
 REG. OF DEEDS  
*Lucy Stand*

**10143**

Register of Deeds Stamp & File Number

4. Lot No. \_\_\_\_\_, Recorded Plat \_\_\_\_\_  
 5. Private Claims \_\_\_\_\_



I, Randy Kolehouse, in a field survey on June 25 19 97, do hereby certify that under requirements of P.A. 74 Michigan P.A. of 1970, the corner points mentioned in lines 1 and 2 above were in conformance with regulations and rules therefore as required in the current manual of survey instructions of the United States Department of the Interior, Bureau of Land Management or by a decree of a Court of Law and/or that the corner points mentioned in lines 3, 4 and 5 above were in conformance with the rules of the Michigan Board of Land Surveyors or by a Decree of a Court of Law; established, re-established, monumented, re-monumented, recovered, found as expressed below:

**NOTE: Not more than 4 corners, all in the same town and range, may be recorded on this certificate.**

**A. Description of original monument and accessories and/or subsequent restoration:**

K-3	1831	G.L.O. Notes	Mullett	Set Post
	1944	Witness Map	K.C. Surveyor	Iron
	1971	L.C.R.C. #98	Williams & Works	1" Iron in Mon. Box
	1981	L.C.R.C. #2443	Jonker Land Surveys	Fnd. 1" Iron in Mon. Box / Set K.C. Mon. in Mon. Box
	1989	L.C.R.C. #5270	J. Bueche	K.C. Monument in Mon. Box

This corner was originally approved by the Kent County Remonumentation Peer Group and monumented by Rob Jonker on 12/7/81 and was recorded per L.C.R.C. #2443.

**B. Description of corner evidence found and/or method applied in restoring or reestablishing corner:**

K-3 Found a Standard Kent County Monument at the C/L intersection of Ramsdell Drive (bit.) running North and South and 9 Mile Road (bit.) running West on line of a tree row running East per L.C.R.C.'s #2443 and #5270 as set by Rob Jonker in place of a 1" iron he found in a monument box which checked L.C.R.C. #98 and the K.C. Surveyor's records.

L.C.R.C. #2443

L.C.R.C. #5270

Remon. tag on NW side 30" Hickory N44°E 37.49'  
 Remon. tag on SE side 34" Oak S52°W 39.89'  
 Remon. tag on SW side 30" Maple N50°W 44.60'

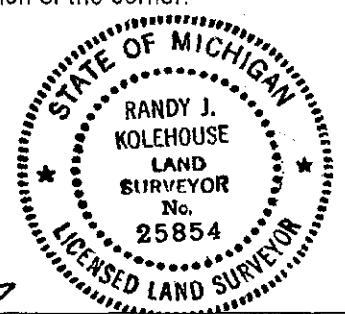
Remon tag & nail on NW side 34" Hickory N 44° E 37.49'  
 Remon tag & nail on SE side 38" Oak S 52° W 39.70'  
 Remon tag & nail on SW side 32" Maple N 50° W 44.60'  
 Capped iron Easterly 33'

The selected location is accepted by me and is generally accepted by professional surveyors as the best available evidence of the position of the original corner.

**C. Description of monument for corner and accessories established to perpetuate locating the position of the corner:**

K-3 Standard Kent County Monument

- Nail & K.C. remon. tag on NW side 34" Hickory N 44° E 37.49'
- Nail & K.C. remon. tag on SE side 38" Oak S 52° W 39.70'
- Nail & K.C. remon. tag on SW side 30" Maple N 50° W 44.60'
- Nail & K.C. remon. tag on W side 30" Maple S 15° E 101.50'



Signed by *Randy J. Kolehouse*  
 EARTH TECH

Date 8/17/97

Surveyor's Michigan License No. 25854

P.A. 345 1990 KENT COUNTY  
 PEER APPROVED 7/29/97  
 CHAIRMAN *Frank Pappas*