

**SURVEY & REMONUMENTATION**

**MAR 03 1998**

**LAND CORNER RECORDATION CERTIFICATE**  
 Filing Requirement of Act 74, Mich. P.A. 1970  
 KENT COUNTY REMONUMENTATION

**SECTION**

For corners in

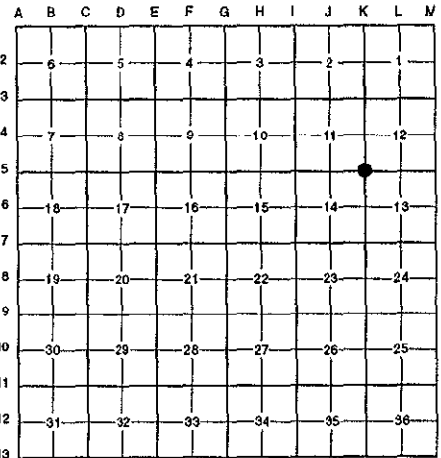
Kent (County)	Located in: Cannon Township	Corner Code #
1. Public Land Survey	T <u>8N</u> R <u>10W</u>	<u>K-5</u>
	T _____ R _____	_____
	T _____ R _____	_____
	T _____ R _____	_____
2. Property Controlling in Section	S _____ T _____ R _____	_____
	S _____ T _____ R _____	_____
3. Miscellaneous Property in Sec.	S _____ T _____ R _____	_____
	S _____ T _____ R _____	_____
4. Lot No. _____, Recorded Plat _____		
5. Private Claims _____		

STATE OF MICHIGAN  
 COUNTY OF KENT  
 RECEIVED FOR RECORD  
 97 OCT 15 AM 8:47  
 REG. OF DEEDS  
*Lucy Bond*

**10145**

Register of Deeds Stamp & File Number

I, Randy Kolehouse, in a field survey on June 25 19 97, do hereby certify that under requirements of P.A. 74 Michigan P.A. of 1970, the corner points mentioned in lines 1 and 2 above were in conformance with regulations and rules therefore as required in the current manual of survey instructions of the United States Department of the interior, Bureau of Land Management or by a decree of a Court of Law and/or that the corner points mentioned in lines 3, 4 and 5 above were in conformance with the rules of the Michigan Board of Land Surveyors or by a Decree of a Court of Law; established, re-established, monumented, re-monumented, recovered, found as expressed below:



**NOTE: Not more than 4 corners, all in the same town and range, may be recorded on this certificate.**

**A. Description of original monument and accessories and/or subsequent restoration:**

K-5	1831	G.L.O. Notes	Mullett	Set Post
	1930-63	Witness Map	K.C. Surveyor	1" Iron in Monument Box
	1972	L.C.R.C. #95	Williams & Works	1-1/4" Iron in Monument Box
	1972	L.C.R.C. #353	Williams & Works	1" Iron in Monument Box
	1981	L.C.R.C. #2444	Jonker Land Surveys	Fnd. 1" Iron in Mon. Box / Set K.C. Monument in Mon. Box
	1989	L.C.R.C. #5272	J. Bueche	K.C. Monument

This corner was originally approved by the Kent County Remonumentation Peer Group and monumented by Rob Jonker on 12/7/81 and was recorded per L.C.R.C. #2444.

**B. Description of corner evidence found and/or method applied in restoring or reestablishing corner:**

K-5 Found a Standard Kent County Monument on the C/L of Ramsdell Drive (bit.) running North and South per L.C.R.C.'s #2444 and #5272 as set by Rob Jonker in place of a 1" iron he found in a monument box which checked L.C.R.C.'s #353, #95, and the K.C. Surveyor's records.

L.C.R.C. #2444

L.C.R.C. #5272

M.S.H.D. tag on SW side p. pole N33°W 51.64'  
 Remon. tag on N side p. pole N87°W 29.09'  
 Remon. tag on SE side 14" Pine S45°W 64.20'  
 NW corner garage fnd. (wood) N67°E 74.47'  
 NW corner house fnd. (conc.) N44°E 102.25'

M.S.H.D. tag on SW side p. pole N 33° W 51.64'  
 Remon. tag & nail on N side p. pole N 87° W 29.09'  
 NW cor. garage fnd. (wood) N 67° E 74.47'  
 NW cor. house fnd. (conc.) N 44° E 102.25'

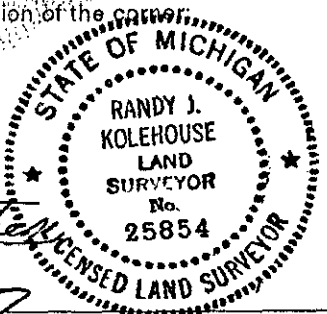
The selected location is accepted by me and is generally accepted by professional surveyors as the best available evidence of the position of the original corner.

**C. Description of monument for corner and accessories established to perpetuate locating the position of the corner:**

K-5 Standard Kent County Monument

Nail & K.C. remon. tag on SW side P. pole N 33° W 51.64'  
 Nail & K.C. remon. tag on N side p. pole N 87° W 29.09'  
 NW cor. garage fnd. N 67° E 74.47'  
 NW cor. house fnd. #6806 N 44° E 102.25'

P.A. 345 1990 KENT COUNTY  
 PEER APPROVED 7/24/97  
 CHAIRMAN [Signature]



Signed by Randy J. Kolehouse Date 8/12/97  
 EARTH TECH  
 Surveyor's Michigan License No. 25854