

SURVEY & REMONUMENTATION

\$7.00
\$2.00 MAR 03 1998

LAND CORNER RECORDATION CERTIFICATE
Filing Requirement of Act 74, Mich. P.A. 1970
KENT COUNTY REMONUMENTATION

For corners in **SECTION**

Kent (County)	Located in: Cannon Township	Corner Code #
1. Public Land Survey	T <u>8N</u> R <u>10W</u>	<u>K-6</u>
	T _____ R _____	_____
	T _____ R _____	_____
	T _____ R _____	_____
2. Property Controlling in Section	S _____ T _____ R _____	_____
	S _____ T _____ R _____	_____
3. Miscellaneous Property in Sec.	S _____ T _____ R _____	_____
	S _____ T _____ R _____	_____

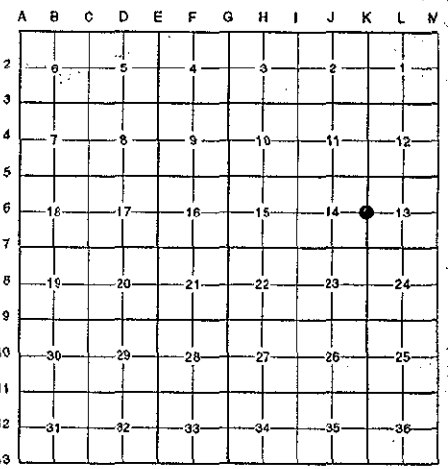
REG. OF DEEDS
Lucy St. Grand

STATE OF MICHIGAN
COUNTY OF KENT
RECEIVED FOR RECORD
97 DEC 15 AM 10:44

10412

Register of Deeds Stamp & File Number

4. Lot No. _____, Recorded Plat _____
5. Private Claims _____



I, Randy Kolehouse, in a field survey on June 25 19 97, do hereby certify that under requirements of P.A. 74 Michigan P.A. of 1970, the corner points mentioned in lines 1 and 2 above were in conformance with regulations and rules therefore as required in the current manual of survey instructions of the United States Department of the interior, Bureau of Land Management or by a decree of a Court of Law and/or that the corner points mentioned in lines 3, 4 and 5 above were in conformance with the rules of the Michigan Board of Land Surveyors or by a Decree of a Court of Law; established, re-established, monumented, re-monumented, recovered, found as expressed below:

NOTE: Not more than 4 corners, all in the same town and range, may be recorded on this certificate.

A. Description of original monument and accessories and/or subsequent restoration:

K-6	1831	G.L.O. Notes	Mullett	Set Post
	1963	Witness Map	K.C. Surveyor	Iron
	1972	L.C.R.C. #353	Williams & Works	1" Iron
	1981	L.C.R.C. #2445	Jonker Land Surveys	Fnd. 1" Iron / Set K.C. Monument
	1989	L.C.R.C. #5273	J. Bueche	K.C. Monument

P.A. 345 1990 KENT COUNTY
PEER APPROVED 7/24/97
CHAIRMAN Randy Kolehouse

This corner was originally approved by the Kent County Remonumentation Peer Group and monumented by Rob Jonker on 12/7/81 and was recorded per L.C.R.C. #2445.

B. Description of corner evidence found and/or method applied in restoring or reestablishing corner:

K-6 Found a P.K. nail 6.6' East of the C/L of Ramsdell Drive (bit.) running North and South and 100' ± South of a bituminous drive running East to house #6410. Reset monument per witnesses from L.C.R.C.'s #2445 and #5273.

L.C.R.C. #2445

L.C.R.C. #5273

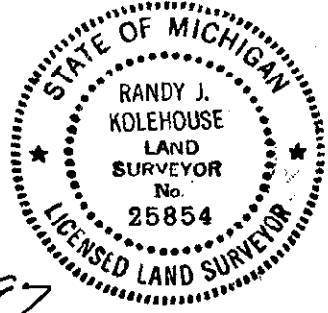
Remon. tag on SE side 8" Willow S24°W 55.30'
Remon. tag on N side 10" Sassafras S58°E 28.58'
SW corner house fnd. N75°E 110.29'

Remon. tag & nail on SE side 12" Willow S 44° W 55.26'
Remon. tag & nail on N side 12" Sassafras S 58° E 28.51' (m. 28.43')
SW cor. house fnd. N 75° E 110.29'
C/L pvt., West, 6.6' m/l
P.C. of curve to SW, South 50' m/l

The selected location is accepted by me and is generally accepted by professional surveyors as the best available evidence of the position of the original corner.

C. Description of monument for corner and accessories established to perpetuate locating the position of the corner:

K-6 Replaced P.K. Nail with a Standard Kent County Monument
Nail & K.C. remon. tag on SE side 12" Willow S 44° W 55.26'
Nail & K.C. remon. tag on N side 12" Sassafras S 58° E 28.43'
SW cor. hse. fnd. N 75° E 110.29'
Nail & K.C. remon. tag on W side 12" Oak N 20° E 42.76'
C/L Ramsdell Road West 6.6'



Signed by Randy J. Kolehouse
EARTH TECH

Date 12/5/97

Surveyor's Michigan License No. 25854