

SURVEY & REMONUMENTATION

MAR 03 1998

LAND CORNER RECORDATION CERTIFICATE
Filing Requirement of Act 74, Mich. P.A. 1970
KENT COUNTY REMONUMENTATION

SECTION

For corners in

Kent (County)	Located in:	Cannon Township	Corner Code #
1. Public Land Survey	T <u>8N</u>	R <u>10W</u>	<u>K-7</u>
	T _____	R _____	_____
	T _____	R _____	_____
	T _____	R _____	_____
2. Property Controlling in Section	S _____	T _____	R _____
	S _____	T _____	R _____
3. Miscellaneous Property in Sec.	S _____	T _____	R _____
	S _____	T _____	R _____

STATE OF MICHIGAN
 COUNTY OF KENT
 RECEIVED FOR RECORD
 97 DEC 15 AM 10:44
 REG. OF DEEDS
[Signature]

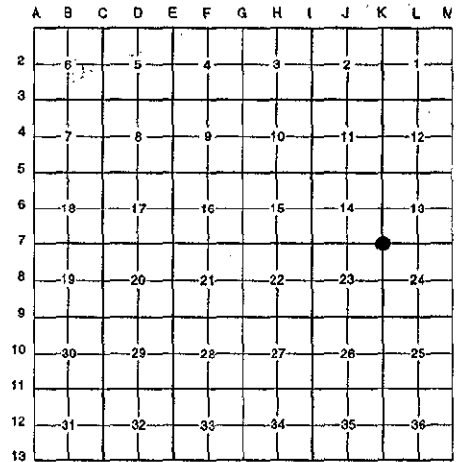
10413

Register of Deeds Stamp & File Number

4. Lot No. _____, Recorded Plat _____
 5. Private Claims _____

I, Randy Kolehouse, in a field survey on November 11 19 97, do hereby certify that under requirements of P.A. 74 Michigan P.A. of 1970, the corner points mentioned in lines 1 and 2 above were in conformance with regulations and rules therefore as required in the current manual of survey instructions of the United States Department of the interior, Bureau of Land Management or by a decree of a Court of Law and/or that the corner points mentioned in lines 3, 4 and 5 above were in conformance with the rules of the Michigan Board of Land Surveyors or by a Decree of a Court of Law; established, re-established, monumented, re-monumented, recovered, found as expressed below:

NOTE: Not more than 4 corners, all in the same town and range, may be recorded on this certificate.



A. Description of original monument and accessories and/or subsequent restoration:

K-7	1831	G.L.O. Notes	Mullett	Set Post
	1935-43	Witness Map	K.C. Surveyor	Monument
	1983	L.C.R.C. #3725	All-Points Surveyors	Concrete Monument
	1984	L.C.R.C. #4228	J. Bueche	Fnd. Concrete Mon./ Set K.C. Monument
	1989	L.C.R.C. #5274	J. Bueche	K.C. Monument P.A. 345 1990 KENT COUNTY

PEER APPROVED 11/20/97
 CHAIRMAN [Signature]

This corner was originally approved by the Kent County Remonumentation Peer Group and monumented by J. Bueche on 4/21/84 and was recorded per L.C.R.C. #4228.

B. Description of corner evidence found and/or method applied in restoring or reestablishing corner:

K-7 Found a Standard Kent County Monument encased in concrete in the swamp per L.C.R.C.'s #4228 and #5274 as set by Rob Jonker in place of a concrete monument he found in a swamp which checked L.C.R.C. #213 and the K.C. Surveyor's records.

L.C.R.C. #4228

- K.C. Remon. tag & nail in N. side of 6" Pine S 60° W 56.23'
- K.C. Remon. tag & nail in E. side of 8" Pine N 25° W 49.96'
- sq. nail in E. side of 6" Pine S 20° E 26.29'
- sq. nail in W. side of 8" Pine S 45° E 32.25'
- sq. nail in N. side of 12" Pine N 90° E 43.95'

L.C.R.C. #5274

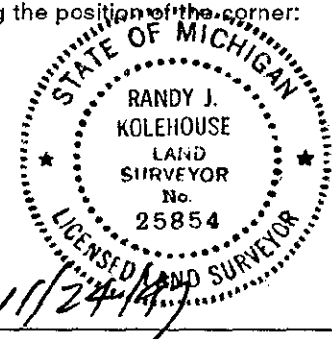
- Remon. tag & nail in N. side of 6" Pine S 60° W 56.23' (m. 56.38')
- Remon. tag & nail in E. side of 8" Pine N 25° W 49.96' (m. 49.94')
- Sq. nail in E. side of 6" Pine S 20° E 26.29' (m. 20.30')
- Sq. nail in W. side of 8" Pine S 45° E 32.25' (m. 32.38')
- Sq. nail in N. side of 12" Pine N 90° E 43.95' (m. 44.00')

The selected location is accepted by me and is generally accepted by professional surveyors as the best available evidence of the position of the original corner.

C. Description of monument for corner and accessories established to perpetuate locating the position of the corner:

K-7 Standard Kent County Monument

- Nail & K.C. remon. tag on N side 6" Pine S 60° W 56.38'
- Nail & K.C. remon. tag on E side 8" Pine N 25° W 49.94'
- Nail & K.C. remon. tag on E side 6" Pine S 20° E 26.30'
- Nail & K.C. remon. tag on W side 8" Pine S 45° E 32.38'
- Nail & K.C. remon. tag on N side 12" Pine N 90° E 44.00'



Signed by [Signature] Date 11/24/97

EARTH TECH

Surveyor's Michigan License No. 25854