

**SURVEY & REMONUMENTATION**

MAR 03 1998

**SECTION**

**LAND CORNER RECORDATION CERTIFICATE**  
**Filing Requirement of Act 74, Mich. P.A. 1970**  
**KENT COUNTY REMONUMENTATION**

For corners in

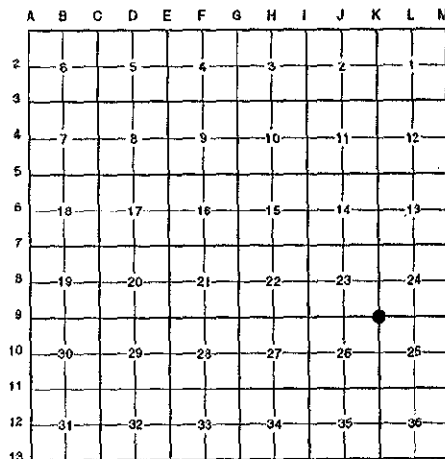
Kent (County)	Located in: Cannon Township	Corner Code #
1. Public Land Survey	T <u>8N</u> R <u>10W</u>	<u>K-9</u>
	T _____ R _____	_____
	T _____ R _____	_____
	T _____ R _____	_____
2. Property Controlling in Section	S _____ T _____ R _____	_____
	S _____ T _____ R _____	_____
3. Miscellaneous Property in Sec.	S _____ T _____ R _____	_____
	S _____ T _____ R _____	_____

REG. OF DEEDS  
 10147  
 Register of Deeds Stamp & File Number

STATE OF MICHIGAN  
 COUNTY OF KENT  
 RECEIVED FOR RECORD  
 97 OCT 15 AM 8:47

4. Lot No. \_\_\_\_\_, Recorded Plat \_\_\_\_\_
5. Private Claims \_\_\_\_\_

I, Randy Kolehouse, in a field survey on June 25 19 97, do hereby certify that under requirements of P.A. 74 Michigan P.A. of 1970, the corner points mentioned in lines 1 and 2 above were in conformance with regulations and rules therefore as required in the current manual of survey instructions of the United States Department of the interior, Bureau of Land Management or by a decree of a Court of Law and/or that the corner points mentioned in lines 3, 4 and 5 above were in conformance with the rules of the Michigan Board of Land Surveyors or by a Decree of a Court of Law; established, re-established, monumented, re-monumented, recovered, found as expressed below:



**NOTE: Not more than 4 corners, all in the same town and range, may be recorded on this certificate.**

**A. Description of original monument and accessories and/or subsequent restoration:**

K-9	1831	G.L.O. Notes	Mullett	Set Post
	1943	Witness Map	K.C. Surveyor	1" Iron
	1977	L.C.R.C. #1050	Williams & Works	Boat Spike
	1981	L.C.R.C. #2447	Jonker Land Surveys	Fnd. Boat Spike / Set K.C. Monument
	1989	L.C.R.C. #5276	J. Bueche	K.C. Monument

This corner was originally approved by the Kent County Remonumentation Peer Group and monumented by Rob Jonker on 12/8/81 and was recorded per L.C.R.C. #2447.

**B. Description of corner evidence found and/or method applied in restoring or reestablishing corner:**

K-9 Found a Standard Kent County Monument at the C/L intersection of Giles Road (bit.) running North and South and 6 Mile Road (bit.) running East and West per L.C.R.C.'s #2447 and #5276 as set by Rob Jonker in place of a boat spike he found over a 1" iron 6" below grade over a 1" iron 24" below grade which checked L.C.R.C. #1050 and the K.C. Surveyor's records.

**L.C.R.C. #2447**

Remon. tag on NE side 24" Oak S24°E 63.46'  
 Remon. tag on E side 18" Oak S18°W 62.81'  
 Remon. tag on E side p&t pole N31°E 81.89'  
 Remon. tag on SW side 18" Apple N45°W 53.82'

**L.C.R.C. #5276**

Remon. tag & nail on E side 22" Oak S 18° W 62.82'  
 Remon. tag & nail on E side p & t pole N 31° E 81.89'  
 Remon. tag & nail on SW side 18" Apple N 45° W 53.62'  
 Remon. tag & nail on S side 24" Oak S 70° E 90.22'

The selected location is accepted by me and is generally accepted by professional surveyors as the best available evidence of the position of the original corner.

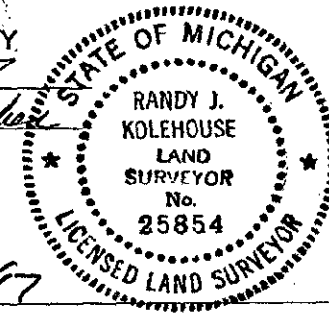
**C. Description of monument for corner and accessories established to perpetuate locating the position of the corner:**

K-9 Standard Kent County Monument

Nail & K.C. remon. tag on E side 22" Oak S 18° W 62.82'  
 Nail & K.C. remon. tag on E side P.-T. pole N 31° E 81.89'  
 Nail & K.C. remon. tag on SW side 18" Apple N 45° W 53.62'  
 Nail & K.C. remon. tag on S side 24" Oak S 70° E 90.22'

P.A. 345 1990 KENT COUNTY

PEER APPROVED 7/29/97  
 CHAIRMAN Harry Huber



Signed by Randy J. Kolehouse Date 8/10/97  
 EARTH TECH

Surveyor's Michigan License No. 25854