

# SURVEY & REMONUMENTATION

MAR 03 1998

## LAND CORNER RECORDATION CERTIFICATE Filing Requirement of Act 74, Mich. P.A. 1970 KENT COUNTY REMONUMENTATION

For corners in **SECTION**

Kent (County)	Located in: Cannon Township	Corner Code #
1. Public Land Survey	T <u>8N</u> R <u>10W</u>	<u>K-10</u>
	T _____ R _____	_____
	T _____ R _____	_____
	T _____ R _____	_____
2. Property Controlling in Section	S _____ T _____ R _____	_____
	S _____ T _____ R _____	_____
3. Miscellaneous Property in Sec.	S _____ T _____ R _____	_____
	S _____ T _____ R _____	_____

STATE OF MICHIGAN  
 COUNTY OF KENT  
 RECEIVED FOR RECORD  
 97 OCT 15 AM 8:48  
 REG. OF DEEDS  
*Luigi Bondi*

10148

Register of Deeds Stamp & File Number

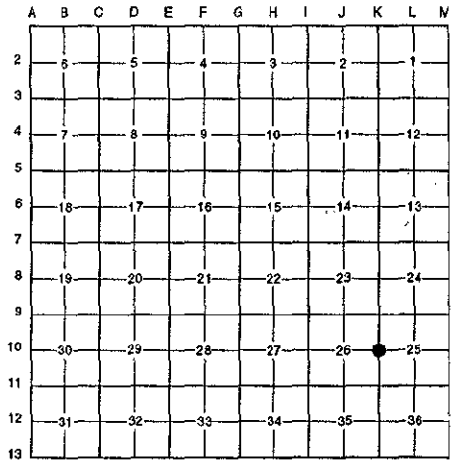
4. Lot No. \_\_\_\_\_, Recorded Plat \_\_\_\_\_  
 5. Private Claims \_\_\_\_\_

I, Randy Kolehouse, in a field survey on June 26 19 97, do hereby certify that under requirements of P.A. 74 Michigan P.A. of 1970, the corner points mentioned in lines 1 and 2 above were in conformance with regulations and rules therefore as required in the current manual of survey instructions of the United States Department of the interior, Bureau of Land Management or by a decree of a Court of Law and/or that the corner points mentioned in lines 3, 4 and 5 above were in conformance with the rules of the Michigan Board of Land Surveyors or by a Decree of a Court of Law; established, re-established, monumented, re-monumented, recovered, found as expressed below:

**NOTE: Not more than 4 corners, all in the same town and range, may be recorded on this certificate.**

**A. Description of original monument and accessories and/or subsequent restoration:**

K-10	1831	G.L.O. Notes	Mullett	Set Post
	1969	Witness Map	K.C. Surveyor	Monument
	1977	L.C.R.C. #1050	Williams & Works	1-1/4" Iron in Remains of Monument
	1981	L.C.R.C. #2448	Jonker Land Surveys	Fnd. 1" Iron in Conc. Mon. / Set K.C. Monument
	1989	L.C.R.C. #5277	J. Bueche	K.C. Monument



This corner was originally approved by the Kent County Remonumentation Peer Group and monumented by Rob Jonker on 12/9/81 and was recorded per L.C.R.C. #2448.

**B. Description of corner evidence found and/or method applied in restoring or reestablishing corner:**

K-10 Found a Standard Kent County Monument at the C/L intersection of Giles Road running North (gravel) and South (bit.) and the C/L of B.J. Road (gravel to bituminous) running West per L.C.R.C.'s #2448 and #5277 as set by Rob Jonker in place of a 1" iron he found in top of a 4" x 30" concrete monument which checked L.C.R.C. #1050 and the K.C. Surveyor's records.

L.C.R.C. #2448

Remon. tag on SW side p&t pole N47°W 60.57'

L.C.R.C. #5277

Remon. tag & nail on SW side p & t pole N 47° W 60.57'  
 Stump of 28" Box Elder N 35° E 50.0'

P.A. 345 1990 KENT COUNTY  
 PEER APPROVED 7/24/97  
 CHAIRMAN *Randy Kolehouse*

The selected location is accepted by me and is generally accepted by professional surveyors as the best available evidence of the position of the original corner.

**C. Description of monument for corner and accessories established to perpetuate locating the position of the corner:**

K-10 Standard Kent County Monument

- Nail & K.C. remon. tag on SW side P. pole N 47° W 60.57'
- Nail & K.C. remon. tag on S side 22" Box Elder East 54.32'
- Rebar S 45° W 43.56'
- Nail & K.C. remon. tag 6.5' above ground on SW side 10" Box Elder N 45° E 70.42'



Signed by *Randy J. Kolehouse* Date 8/12/97  
 EARTH TECH

Surveyor's Michigan License No. 25854