

SURVEY & REMONUMENTATION

MAR 03 1998

LAND CORNER RECORDATION CERTIFICATE Filing Requirement of Act 74, Mich. P.A. 1970 KENT COUNTY REMONUMENTATION

STATE OF MICHIGAN
COUNTY OF KENT
RECEIVED FOR RECORD
97 OCT 15 AM 8:48
REG. OF DEEDS
Lucinda

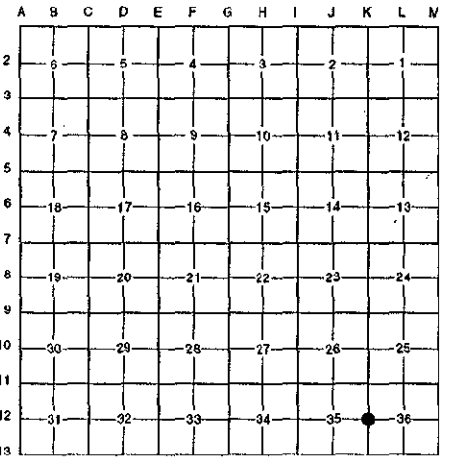
SECTION
For corners in

Kent (County)	Located in: Cannon Township	Corner Code #
1. Public Land Survey	T <u>8N</u> R <u>10W</u>	<u>K-12</u>
	T _____ R _____	_____
	T _____ R _____	_____
	T _____ R _____	_____
2. Property Controlling in Section	S _____ T _____ R _____	_____
	S _____ T _____ R _____	_____
3. Miscellaneous Property in Sec.	S _____ T _____ R _____	_____
	S _____ T _____ R _____	_____

10150
Register of Deeds Stamp & File Number

4. Lot No. _____, Recorded Plat _____
5. Private Claims _____

I, Randy Kolehouse, in a field survey on June 26 19 97, do hereby certify that under requirements of P.A. 74 Michigan P.A. of 1970, the corner points mentioned in lines 1 and 2 above were in conformance with regulations and rules therefore as required in the current manual of survey instructions of the United States Department of the Interior, Bureau of Land Management or by a decree of a Court of Law and/or that the corner points mentioned in lines 3, 4 and 5 above were in conformance with the rules of the Michigan Board of Land Surveyors or by a Decree of a Court of Law; established, re-established, monumented, re-monumented, recovered, found as expressed below:



NOTE: Not more than 4 corners, all in the same town and range, may be recorded on this certificate.

A. Description of original monument and accessories and/or subsequent restoration:

K-12	1831	G.L.O. Notes	Mullett	Set Post
	N/A	Witness Map	K.C. Surveyor	Stake & Stone
	1987	L.C.R.C. #4489	All-Points Surveyors	Fnd. Spike / Set K.C. Monument
	1989	L.C.R.C. #5279	J. Bueche	Broken K.C. Monument

P.A. 345 1990 KENT COUNTY
PEER APPROVED 7/29/97
CHAIRMAN Henry Huber

This corner was originally approved by the Kent County Remonumentation Peer Group and monumented by All-Points Surveyors in January of 1987 and was recorded per L.C.R.C. #4489.

B. Description of corner evidence found and/or method applied in restoring or reestablishing corner:

K-12 Found a Standard Kent County Monument (broken) 0.8' below grade on the C/L of Giles Road (gravel) running North and South on line of a tree row running East per L.C.R.C.'s #4489 and #5279 as set by All-Points Surveyors in place of a large spike they found which checked the K.C. Surveyor's records.

L.C.R.C. #4489

L.C.R.C. #5279

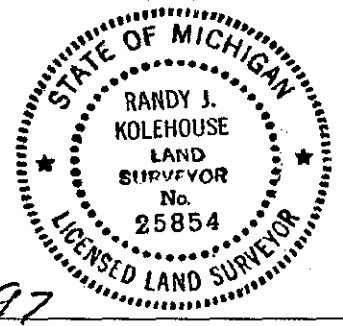
Nail & K.C. Remon tag SW side 12" Maple S35° E 36.91'
Nail & K.C. Remon tag S side P. Pole N 55° W 194.57'
Nail & K.C. Remon tag W side 16" W. Cherry N 15° E 82.13'

Nail & K.C. Remon. tag SW side 12" Maple S 35° E 36.91'
Nail & K.C. Remon. tag S side p. pole N 55° W 194.57'
Nail & K.C. Remon. tag W side 16" W. Cherry N 15° E 82.13'

The selected location is accepted by me and is generally accepted by professional surveyors as the best available evidence of the position of the original corner.

C. Description of monument for corner and accessories established to perpetuate locating the position of the corner:

K-12 Reset a Standard Kent County Monument
Nail & K.C. remon. tag on S side 8" Twin Elm N 90° E 36.88'
Nail & K.C. remon. tag on SW side 12" Elm S 35° E 36.91'
Nail & K.C. remon. tag on S side P. pole N 55° W 194.57'
Nail & K.C. remon. tag on W side 16" W. Cherry N 15° E 82.13'



Signed by Randy J. Kolehouse Date 8/12/97
EARTH TECH
Surveyor's Michigan License No. 25854