

KENT COUNTY REMONUMENTATION

STATE OF MICHIGAN  
COUNTY OF KENT  
RECEIVED FOR RECORD

93 MAR -9 PM 1:56

LAND CORNER RECORDATION CERTIFICATE  
Filing Requirement of Act 74, Mich. P.A. 1970

*Lee J. Starr*  
REG. OF DEEDS

for corners in \_\_\_\_\_  
KENT (County)

Located In: CANNON TWP  
Corner Code ## \_\_\_\_\_

1. Public Land Survey Cannon Township	T	8 - N	R	10 - W	M-12
	T		R		
	T		R		
	T		R		
2. Property Controlling in Section	S		T	R	
	S		T	R	
3. Miscellaneous Property in Sec.	S		T	R	
	S		T	R	

6734  
Register of Deeds Stamp & File Number

4. Lot No. \_\_\_\_\_, Recorded Plat \_\_\_\_\_  
5. Private Claims \_\_\_\_\_

	A	B	C	D	E	F	G	H	I	J	K	L	M
2	6	5	4	3	2	1							
3													
4	7	8	9	10	11	12							
5													
6	18	17	16	15	14	13							
7													
8	19	20	21	22	23	24							
9													
10	30	29	28	27	26	25							
11													
12	31	32	33	34	35	36							
13													

I, Thomas C. Starr, in a field survey on March 3, 19 93, do hereby certify that under requirements of P.A. 74, Michigan P.A. of 1970, the corner points mentioned in lines 1 and 2 above were in conformance with regulations and rules therefore as required in the current manual of survey instructions of the United States Department of the Interior, Bureau of Land Management or by a decree of a Court of Law and/or that the corner points mentioned in lines 3, 4 and 5 above were in conformance with the rules of the Michigan Board of Land Surveyors or by a Decree of a Court of Law; established, re-established, monumented, re-monumented, recovered, found as expressed below:

**NOTE: Not more than 4 corners, all in the same town and range, may be recorded on this certificate.**

A. Description of original monument and accessories and/or subsequent restoration:

M-12 East 1/4 corner of Section 36  
Corner is in Ratigan Lake

B. Description of corner evidence found and/or method applied in restoring or reestablishing corner:

See PA - 132 Survey Recorded in Liber R5R, Page 40  
For Section Survey.  
Set witness monument on East and West 1/4 line  
1950 feet East of center of Section 36.  
and 706.09 feet West of the East 1/4 corner.



C. Description of monument for corner and accessories established to perpetuate locating the position of the corner:

Set Standard Kent County Monument with wit. cap.

WITNESSES

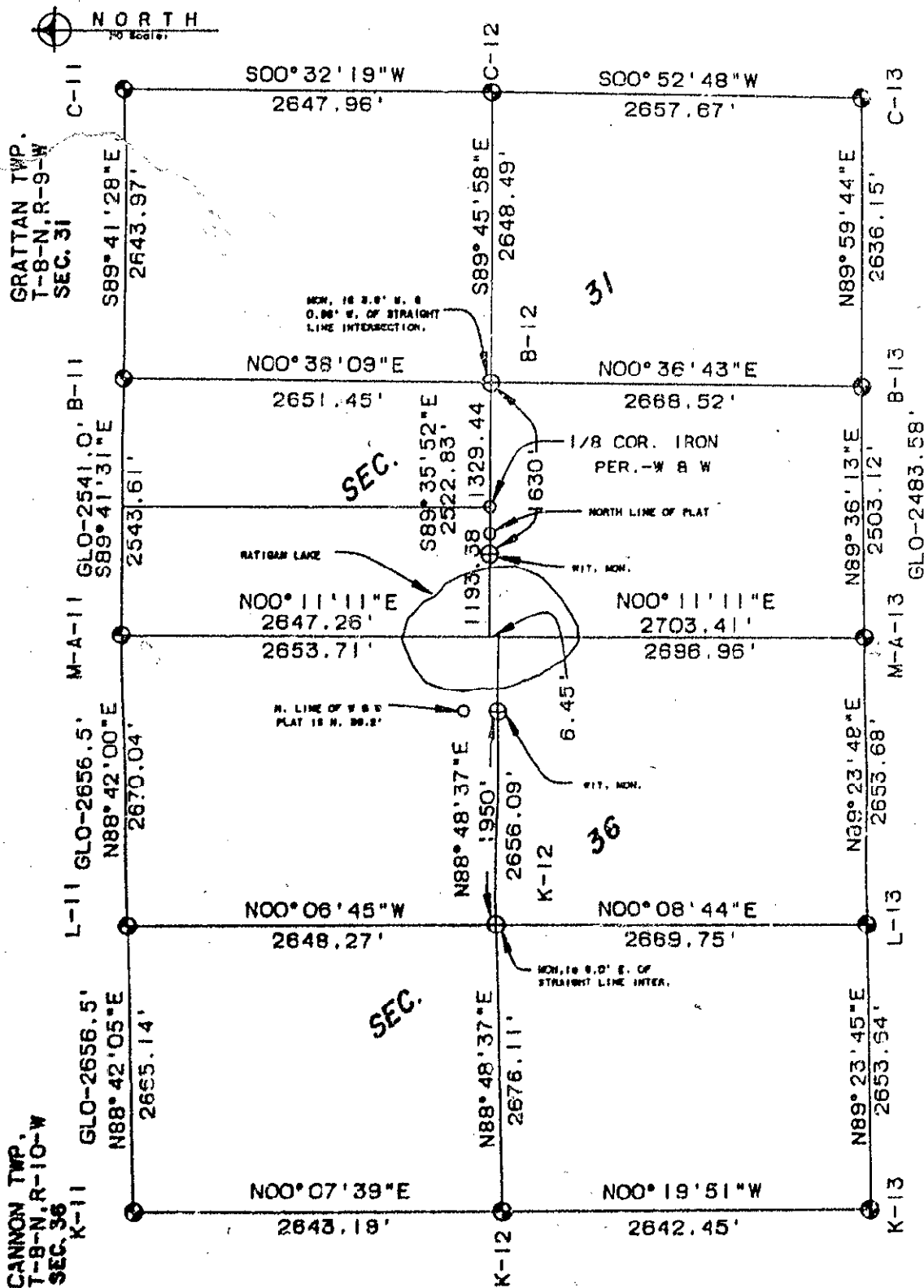
Nail and Remon Tag in	N.	side Twin 12" Maple	N - 65 - W	=	13.07'
Nail and Remon Tag in	N.	side Twin 14" Maple	N - 40 - W	=	23.25'
Nail and Remon Tag in	W.	side 12" Cherry	N - 05 - W	=	46.65'
Nail and Remon Tag in	W.	side 10" Maple	N - 40 - E	=	31.49'
Nail and Remon Tag in	S.	side 10" Willow	S - 80 - E	=	12.16'
Nail and Remon Tag in	E.	side 6" Willow	S - 35 - E	=	17.00'

Iron on North line of W & W Plat - North - 36.2'

Signed by Thomas C. Starr Date March 9, 1993  
Surveyor's Michigan License No. 25874

Project No. 92037  
 Date: 3-8-93  
 For: KENT CO. REMON

State of Michigan,  
 Kent County Register of Deeds  
 This survey was received for record  
 on the 9th day of March, 1993 at 2:00 P.M.  
 Recorded in Liber 252 of surveys Page 40.

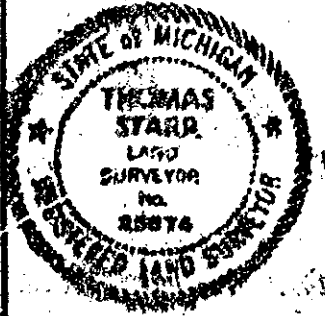


NOTE: ALL BEARINGS BASED ON SOLAR OBSERVATION

I HEREBY CERTIFY THAT THIS SURVEY MEETS ALL OF THE REQUIREMENTS OF P.A. 132-1978.

- LEGEND**
- IRON STAKE (FOUND)
  - ⊕ MONUMENT (SET)
  - MONUMENT
  - D WOOD STAKE
  - - - FENCE LINE
  - R RECORDED DIMENSION
  - D DEED DIMENSION
  - M MEASURED DIMENSION
  - CENTER LINE

**OTM**  
 O'Malley Engineering, Inc.  
 Civil Engineers/Surveyors  
 1550 East Beltline, S.E.  
 Grand Rapids, MI 49508  
 616-857-4950



*Thomas C. Starr*  
**THOMAS C. STARR**  
 Registered Land Surveyor  
 No. 25874