

39

T8N, R11, 12W

1/4 CORNER To 31 - 36
 IRON PIPE 1.5 in. pond No 3
 10" ASH N 60° W 19.5

Found Front Stake NW of Hatchery Residence
 Chimney Cor S 75° W 36.4'
 20" Maple S 30° E 2.7'
 Edge Part. 3.3

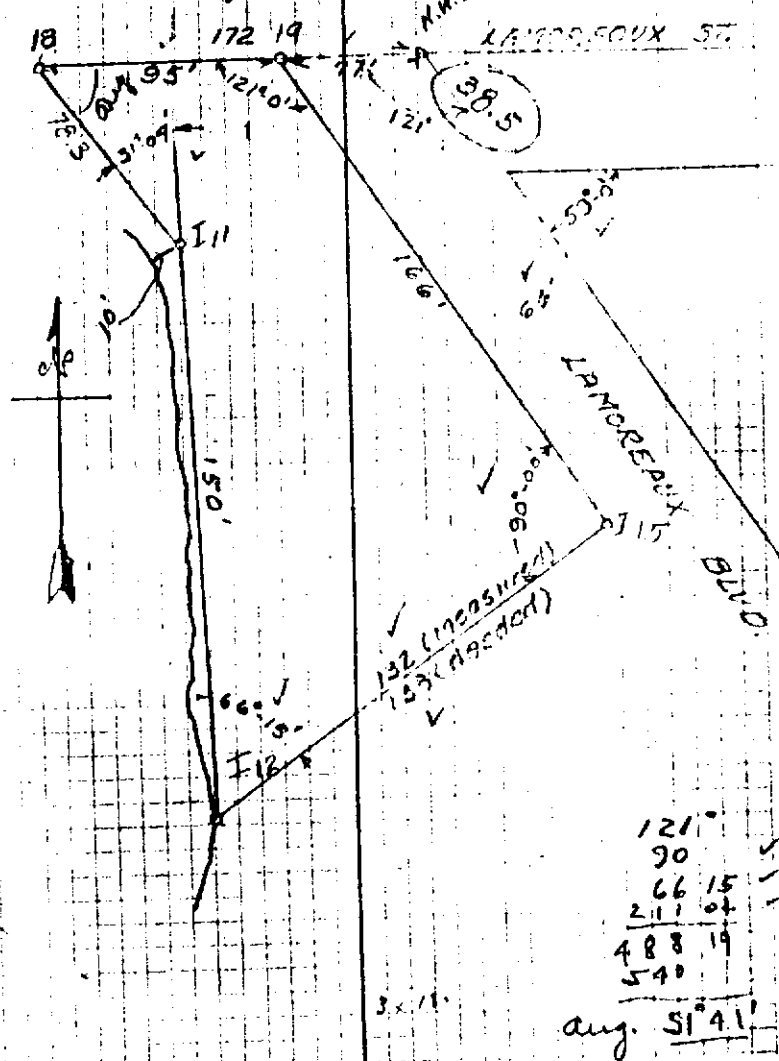
| | |
|--------|----------|
| 38.5 | 77 |
| 38.5 | 77 |
| 192.5 | 509 |
| 308.0 | 53 |
| 205.5 | 5929 |
| 382.25 | 1382.25 |
| | 3053.47 |
| | 10869.92 |
| 201 | 0364 |
| | 211 |
| 102 | 16392 |

| | |
|------------|--------------|
| 38.5 | 121.0 |
| 77 | |
| | Lam on east |
| | Fence + Blue |
| 38.5 | |
| 77.0 | |
| 77 | |
| 5929 | |
| 51504 | |
| 28716 | |
| 29645 | |
| 5929 | |
| 29645 | |
| 3053.67816 | |

1018

NOTES BY CADE

C.V. CARPENTER'S SURVEY
 (Bill Williams)



| |
|--------------|
| 121° |
| 90 |
| 66 15 |
| 211 04 |
| 488 19 |
| 540 |
| avg. 51° 41' |