

FEB 14 1997

COMMISSION

KENT COUNTY REMONUMENTATION

LAND CORNER RECORDATION CERTIFICATE
Filing Requirement of Act 74, Mich. P.A. 1970

For corners in

KENT COUNTY

(County)

Located In:

Corner Code #

1. Public Land Survey	T8N R11W	C-8
	T___ R___	_____
	T___ R___	_____
	T___ R___	_____
2. Property Controlling in Section	S___ T___ R___	_____
	S___ T___ R___	_____
3. Miscellaneous Property in Sec.	S___ T___ R___	_____
	S___ T___ R___	_____

STATE OF MICHIGAN
COUNTY OF KENT
RECEIVED FOR RECORD
95 MAR 20 AM 8:54
REG. OF DEEDS
Lucy Stand

9038

Register of Deeds Stamp & File Number

4. Lot No. _____, Recorded Plat _____
5. Private Claims _____

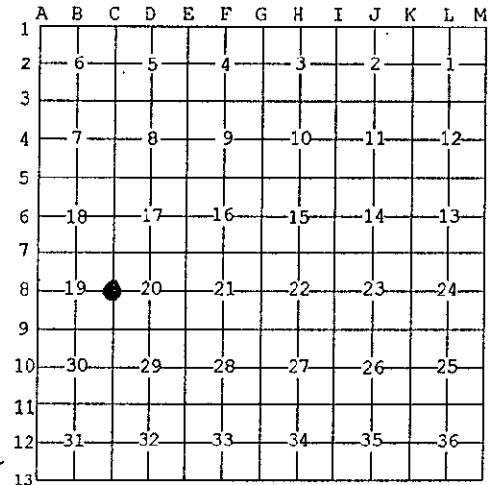
I, Kirk Breitels, in a field survey on Jan. 18, 1996 do hereby state that under requirements of P.A. 74, Michigan P.A. of 1970, the corner points mentioned in lines 1 and 2 above were in conformance with regulations and rules therefore as required in the current manual of survey instructions of the United States Department of the Interior, Bureau of Land Management or by a decree of a Court of Law and /or that the corner points mentioned in lines 3, 4 and 5 above were in conformance with the rules of the Michigan Board of Land Surveyors or by a Decree of a Court of Law; established, re-established, monumented, recovered, found as expressed below:

NOTE: Not more than 2 corner in the same town and range, may be recorded on this certificate.

P.A. 345 1990 KENT COUNTY

PEER APPROVED 3/7/96

CHAIRMAN *Harry Huber*



A. Description of original monument and accessories and/or subsequent restoration:

C-8	1837	GLO	Whitcomb	Set Post
		Kent Co. Wit.		Stake
	1974	LCRC #674	VanKooten	Iron
	1981	LCRC #2327	Bueche	Set Kent County Monument
	1994	LCRC #6905	Byl	Kent County Monument

The position of this corner was previously approved by the Kent County Remonumentation Peer Group, monumented by John C. Bueche on 11/5/81 and was recorded per LCRC #2327.

B. Description of corner evidence found and/or method applied in restoring or reestablishing corner:

C-8 Found standard Kent Co. Mon. (Harrison) per witnesses from above LCRC as set by John C. Bueche in place of the Concrete Monument he found. Said Concrete Monument checks with Kent Co. Wit. and LCRC #674.
LCRC #2327 & #6905

Nail & KC Remon. tag W. side 12" Beech	S00°E	11.53'	Spike W. side 12" Beech
Nail & KC Remon. tag N. side 12" Oak	S50°W	8.93'	S00°E 11.41'
Nail & KC Remon. tag W. side 14" Oak	N05°W	10.03'	Nail & KC Remon. tag
Nail & KC Remon. tag S. side 6" Oak	N55°E	9.05'	NE side 27" Maple
Nail & KC Remon. tag N. side fence post	N90°E	8.85'	S30°E 15.56'

The selected location is accepted by me and is generally accepted by professional surveyors as the best available evidence of the position of the original corner.

C. Description of monument for corner and accessories established to perpetuate locating the position of the corner:

C-8 Standard Kent County Monument

Spike W. side 12" Beech	S00°E	11.41'
Nail & KC Remon. tag N. side 15" Oak	S50°W	8.98'
Nail & KC Remon. tag NE side 27" Maple	S30°E	15.56'
Nail & KC Remon. tag SE side 6" Oak	N55°E	9.09'
Nail & KC Remon. tag N. side fence post	N90°E	8.85'



Signed by *Kirk Breitels*
Surveyor's Michigan License No. 30077

Date 2/6/96