

MAY 28 1997

**KENT COUNTY REMONUMENTATION**

**LAND CORNER RECORDATION CERTIFICATE**  
Filing Requirement of Act 74, Mich. P.A. 1970

**COMMISSIONER**

REG. OF DEEDS

*Luis S. Gandy*

95 MAR 20 AM 8:55

STATE OF MICHIGAN  
COUNTY OF KENT  
RECEIVED FOR RECORD

For corners in

**KENT COUNTY**

(County)

Located In:

Corner Code #

1. Public Land Survey

T 8N R 11W

E-3

T \_\_\_\_\_ R \_\_\_\_\_

T \_\_\_\_\_ R \_\_\_\_\_

T \_\_\_\_\_ R \_\_\_\_\_

2. Property Controlling in Section

S \_\_\_\_\_ T \_\_\_\_\_ R \_\_\_\_\_

S \_\_\_\_\_ T \_\_\_\_\_ R \_\_\_\_\_

3. Miscellaneous Property in Sec.

S \_\_\_\_\_ T \_\_\_\_\_ R \_\_\_\_\_

S \_\_\_\_\_ T \_\_\_\_\_ R \_\_\_\_\_

**9052**

Register of Deeds Stamp & File Number

4. Lot No. \_\_\_\_\_, Recorded Plat \_\_\_\_\_

5. Private Claims \_\_\_\_\_

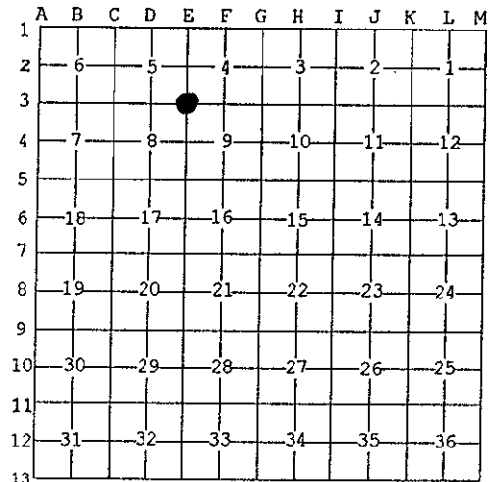
I, Kirk Breitels, in a field survey on Jan. 18, 1996 do hereby state that under requirements of P.A. 74, Michigan P.A. of 1970, the corner points mentioned in lines 1 and 2 above were in conformance with regulations and rules therefore as required in the current manual of survey instructions of the United States Department of the Interior, Bureau of Land Management or by a decree of a Court of Law and /or that the corner points mentioned in lines 3, 4 and 5 above were in conformance with the rules of the Michigan Board of Land Surveyors or by a Decree of a Court of Law; established, re-established, monumented, recovered, found as expressed below:

NOTE: Not more than 2 corners, all in the same town and range, may be recorded on this certificate.

P.A. 345 1990 KENT COUNTY

PEER APPROVED 3/7/96

CHAIRMAN *Harry Hubert*



A. Description of original monument and accessories and/or subsequent restoration:

E-3	1837	GLO	Whitcomb	Set Post
	1964	Kent Co. Wit.		Axle in rock pile
	1975	LCRC #819	Bonnema	Axle
	1981	LCRC #2269	Bueche	Set Kent County Monument
	1994	LCRC #6916	Byl	Kent County Monument

The position of this corner was previously approved by the Kent County Remonumentation Peer Group, monumented by John C. Bueche on 10/31/81 and was recorded per LCRC #2269.

B. Description of corner evidence found and/or method applied in restoring or reestablishing corner:

E-3 Found standard Kent Co. Mon. (Harrison) per witnesses from above LCRC as set by John C. Bueche in place of the Axle he found in a rock pile. Said Axle checks with Kent Co. Wit. and LCRC #819, LCRC #2269 & 6916

- Nail & KC Remon. tag S. side 24" Tw. Oak N50°E 36.65' On E. side dirt path
- Nail & KC Remon. tag S. side 12" Oak N25°W 36.70' On W. side X-mas tree farm
- Nail & KC Remon. tag NW side 18" Hickory S05°W 46.84' C/L 6" Tree - East 2'±
- Nail & KC Remon. tag N. side 14" Oak N70°W 34.34'
- Nail & KC Remon. tag S. side 20" Oak N50°W 29.96'

The selected location is accepted by me and is generally accepted by professional surveyors as the best available evidence of the position of the original corner.

C. Description of monument for corner and accessories established to perpetuate locating the position of the corner:

- E-3 Standard Kent County Monument
- Nail & KC Remon. tag S. side 14" Oak N25°W 36.70'
- Nail & KC Remon. tag N. side 18" Oak N70°W 34.34'
- Nail & KC Remon. tag S. side 20" Oak N50°W 29.96'
- Set Nail & KC Remon. tag S. side 10" Oak S90°E 1.78'
- On E. side dirt path
- On W. side X-mas tree farm



Signed by *Kirk Breitels*  
Surveyor's Michigan License No. 30077

Date 2/6/96