

FEB 14 1997

KENT COUNTY REMONUMENTATION

COMMISSION

LAND CORNER RECORDATION CERTIFICATE  
Filing Requirement of Act 74, Mich. P.A. 1970

For corners in  
KENT COUNTY  
(County)

Located In:	Corner Code #
1. Public Land Survey T8N R11W	F-2
T R	
T R	
T R	
2. Property Controlling in Section S T R	
S T R	
3. Miscellaneous S T R	
S T R	

STATE OF MICHIGAN  
COUNTY OF KENT  
RECEIVED FOR RECORD  
95 SEP 13 PM 12: 04  
REG. OF DEEDS  
*Lucy Stand*

9348

Register of Deeds Stamp & File Number

4. Lot No. \_\_\_\_\_, Recorded Plat \_\_\_\_\_  
5. Private Claims \_\_\_\_\_

I, Kirk Breitels, in a field survey on Aug. 26, 1996 do hereby state that under requirements of P.A. 74, Michigan P.A. of 1970, the corner points mentioned in lines 1 and 2 above were in conformance with regulations and rules therefore as required in the current manual of survey instructions of the United States Department of the Interior, Bureau of Land Management or by a decree of a Court of Law and /or that the corner points mentioned in lines 3, 4 and 5 above were in conformance with the rules of the Michigan Board of Land Surveyors or by a Decree of a Court of Law; established, re-established, monumented, recovered, found as expressed below:

A	B	C	D	E	F	G	H	I	J	K	L	M
1												
2	6	5	4	3	2	1						
3												
4	7	8	9	10	11	12						
5												
6	18	17	16	15	14	13						
7												
8	19	20	21	22	23	24						
9												
10	30	29	28	27	26	25						
11												
12	31	32	33	34	35	36						
13												

NOTE: Not more than 2 corners, all in the same town and range, may be recorded on this certificate.

A. Description of original monument and accessories and/or subsequent restoration:

- F-2 1837---GLO---Not Set 1911---Williams & Works---Stone
- 1954---Williams & Works---Set Iron 2629.0' W. of E 1/4 cor
- 1960---Williams & Works---Set Iron on true E-W 1/4 line  
10" Cherry N 27.55' 8" Cherry S 14.91' N-S fc. E 3'  
C/L 2 pole power lines is S 46'
- Kent Co. Wit.---Iron: 7" Cherry N 26.9' 6" Oak NNE 23.42'
- 1978---LCRC #1111---Reda---"T" Iron  
6" Cherry S05°E 11.0' 14" Oak N05°E 22.7' 3" Cherry East 24.55'
- 1993---Research---Chettleburgh---Used per LCRC #1111

P.A. 345 1990 KENT COUNTY  
PEER APPROVED 8/22/96  
CHAIRMAN *Hans Huber*

B. Description of corner evidence found and/or method applied in restoring or reestablishing corner:

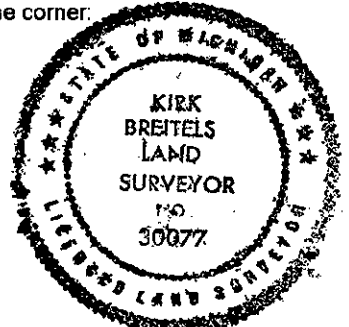
F-2 Found "T" Iron with rocks around per remaining witnesses that follow:  
Stump North 27.5'±

Said "T" Iron is 0.0' S. and 3.9' W. (3.9' W. - G. Hackbardt) from intersection of 1/4 lines and agrees with survey measurements of others.

The "T" Iron is accepted by me and is generally accepted by professional surveyors as the best available evidence of the position of the corner.

C. Description of monument for corner and accessories established to perpetuate locating the position of the corner:

- F-2 Set Standard Kent County Monument in place of the "T" Iron
- Set Nail & KC Remon. tag W. side 4" Cherry S00°W 34.59'
- Set Nail & KC Remon. tag W. side 12" Cherry N00°E 27.42'
- Set Nail & KC Remon. tag NW side 4" Oak Stump N55°E 3.90'
- Set Nail & KC Remon. tag SW side 10" Poplar N60°W 75.47'



Signed by *Kirk Breitels*  
Surveyor's Michigan License No. 30077

Date 9/4/96