

FEB 14 1997

KENT COUNTY REMONUMENTATION

COMMISSIONER LAND CORNER RECORDATION CERTIFICATE
Filing Requirement of Act 74, Mich. P.A. 1970

For corners in

KENT COUNTY

(County)

Located In:

Corner Code #

1. Public Land Survey

T8N R11W

F-3

T R

T R

T R

T R

2. Property Controlling in Section

S

T R

S

T R

3. Miscellaneous Property in Sec.

S

T R

S

T R

4. Lot No. _____, Recorded Plat _____

5. Private Claims _____

STATE OF MICHIGAN
COUNTY OF KENT
RECEIVED FOR RECORD

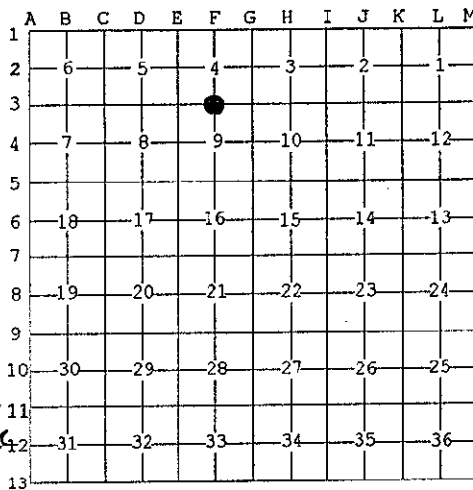
96 MAR 20 AM 8:55

REG. OF DEEDS

9059

Register of Deeds Stamp & File Number

I, Kirk Breitels, in a field survey on Jan. 19, 1996 do hereby state that under requirements of P.A. 74, Michigan P.A. of 1970, the corner points mentioned in lines 1 and 2 above were in conformance with regulations and rules therefore as required in the current manual of survey instructions of the United States Department of the Interior, Bureau of Land Management or by a decree of a Court of Law and/or that the corner points mentioned in lines 3, 4 and 5 above were in conformance with the rules of the Michigan Board of Land Surveyors or by a Decree of a Court of Law; established, re-established, monumented, recovered, found as expressed below:



NOTE: Not more than 2 corners, all in the same town and range, may be recorded on this certificate.

P.A. 345 1990 KENT COUNTY

PEER APPROVED 3/7/96
CHAIRMAN Harry Stuber

A. Description of original monument and accessories and/or subsequent restoration:

F-3	1837	GLO	Whitcomb	Set Post
	1964	Kent Co. Wit.		3/4" Iron
	1975	LCRC #819	Bonnema	1" Iron
	1981	LCRC #2272	Bueche	Set Kent County Monument
	1994	LCRC #6927	Byl	Kent County Monument

The position of this corner was previously approved by the Kent County Remonumentation Peer Group, monumented by John C. Bueche on 10/16/81 and was recorded per LCRC #2272.

B. Description of corner evidence found and/or method applied in restoring or reestablishing corner:

F-3 Found standard Kent Co. Mon. (Harrison) per witnesses from above LCRC as set by John C. Bueche over top of the 1" Iron he found in NE side of a 24" Oak. Said Iron checks with Kent Co. Wit. and LCRC #819.

LCRC #2272 & #6927

Nail & KC Remon. tag S. side 10" Oak	N55°E	17.45'	In line with fence East ±
Nail & KC Remon. tag W. side 18" Oak	N00°E	31.23'	Fence to West is 75'± South
Nail & KC Remon. tag W. side 10" Oak	S05°W	29.75'	
Nail & KC Remon. tag NE side dbl. 10" Oak	N45°W	41.32'	
Nail & KC Remon. tag S. side 27" Oak	S90°E	46.01'	

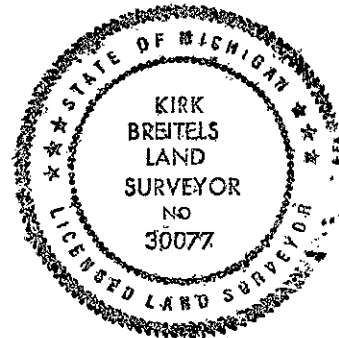
The selected location is accepted by me and is generally accepted by professional surveyors as the best available evidence of the position of the original corner.

C. Description of monument for corner and accessories established to perpetuate locating the position of the corner:

F-3 Standard Kent County Monument in E'ly side of 27" Oak

Nail & KC Remon. tag S. side 12" Oak-dead	N55°E	17.39'
Nail & KC Remon. tag W. side 24" Oak	N00°E	31.21'
Nail & KC Remon. tag W. side 15" Oak	S05°W	29.78'
Nail & KC Remon. tag NE side dbl. 10" Oak	N45°W	41.30'
Nail & KC Remon. tag S. side 27" Oak	S90°E	46.01'

In line with fence East ±
Fence to West is 75'± South



Signed by Kirk Breitels

Date 2/6/96

Surveyor's Michigan License No. 30077