

**SURVEY & REMONUMENTATION**

**KENT COUNTY REMONUMENTATION**

FEB 14 1997

**LAND CORNER RECORDATION CERTIFICATE**  
**Filing Requirement of Act 74, Mich. P.A. 1970**

For corners in **COMMISSION**  
**KENT COUNTY**  
 (County)

Located In:

Corner Code #

1. Public Land Survey	T	8N	R	11W	I-7
	T		R		
	T		R		
	T		R		
2. Property Controlling in Section	S		T		R
	S		T		R
3. Miscellaneous Property in Section	S		T		R
	S		T		R

STATE OF MICHIGAN  
 COUNTY OF KENT  
 RECEIVED FOR RECORD  
 96 MAR 20 AM 8:58  
 REG. OF DEEDS  
*W. S. Bueche*

**9089**

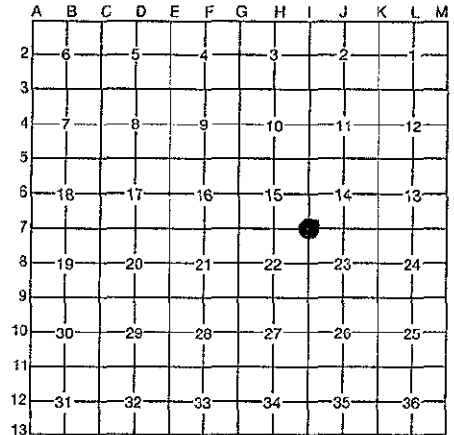
Register of Deeds Stamp & File Number

4. Lot No. \_\_\_\_\_, Recorded Plat \_\_\_\_\_  
 5. Private Claims \_\_\_\_\_

I, **Kirk Breitels**, in a field survey on **Jan. 16**, 19**96**,

do hereby certify that under requirements of P.A. 74, Michigan P.A. of 1970, the corner points mentioned in lines 1 and 2 above were in conformance with regulations and rules therefore as required in the current manual of survey instructions of the United States Department of the Interior, Bureau of Land Management or by a decree of a Court of Law and/or that the corner points mentioned in lines 3, 4 and 5 above were in conformance with the rules of the Michigan Board of Professional Surveyors or by a Decree of a Court of Law; established, re-established, monumented, re-monumented, recovered, found as expressed below:

**NOTE: Not more than 4 corners, all in the same town and range, may be recorded on this certificate.**



A. Description of original monument and accessories and/or subsequent restoration: P.A. 345 1990 KENT COUNTY  
 I-7 1837 GLO Whitcomb Set Post  
 Kent Co. Wit. Monument  
 1978 LCRC #1171 Merdzinski Set "T" Iron from previous witnesses  
 1981 LCRC #2341 Bueche Set Kent County Monument  
 1988 LCRC #4854 Bueche Kent County Monument  
 PEER APPROVED *3/7/96*  
 CHAIRMAN *W. S. Bueche*

The position of this corner was previously approved by the Kent County Remonumentation Peer Group, monumented by John C. Bueche on 11/4/81 and was recorded per LCRC #2341.

B. Description of corner evidence found and/or method applied in restoring or reestablishing corner:

I-7 Found standard Kent Co. Mon. (Harrison) per witnesses from above LCRC as set by John C. Bueche in place of the "T" Iron he found. Said "T" Iron checks with Kent Co. Wit. and LCRC #1171.

LCRC #2341		LCRC #4854	
Nail/tag 12" Tw. Hickory	S35°E 40.40'	Nail/tag 14" Tw. Hickory	S35°E 40.42'
Nail/tag 10" Hickory	S70°E 46.32'	Nail/tag 12" Stump	S70°E 46.32'
Nail/tag 16" Oak	N90°E 84.47'	Nail/tag 18" Oak	N90°E 84.47'
"T" Iron N. edge bit. dr.	S60°W 47.53'	Nail/tag 14" Hickory	S61°E 59.97'
C/L bit. dr. S. 48'±		"T" Iron N. edge bit. dr.	S60°W 47.53'
On top of bank		C/L bit. dr. S. 48'±	

The selected location is accepted by me and is generally accepted by professional surveyors as the best available evidence of the position of the original corner.

C. Description of monument for corner and accessories established to perpetuate locating the position of the corner:

I-7 Standard Kent County Monument	
New Nail & KC Remon. tag W. side 16" Tw. Hickory	S35°E 40.45'
New Nail & KC Remon. tag S. side 20" Oak	N90°E 84.53'
New Nail & KC Remon. tag N. side 16" Hickory	S61°E 60.02'
Set Nail & KC Remon. tag SE side Wood Post	S50°W 25.82'
C/L bit. dr. is South 45'±	



Signed by *Kirk Breitels*

Date *2/6/96*

Surveyor's Michigan License No. **30077**