

FEB 14 1997

LAND CORNER RECORDATION CERTIFICATE  
Filing Requirement of Act 74, Mich. P.A. 1970

For corners in KENT COUNTY  
(County)

COMMISSION

Located In:

Corner Code #

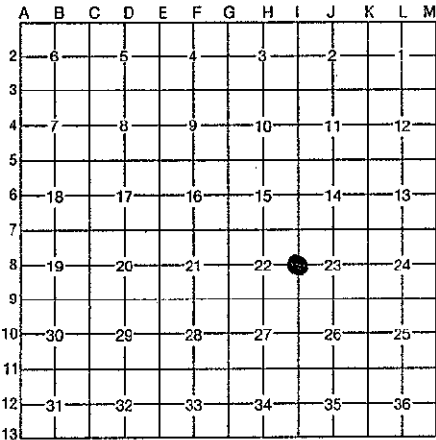
1. Public Land Survey	T	8N	R	11W	I-8
	T		R		
	T		R		
	T		R		
2. Property Controlling in Section	S	T	R		
	S	T	R		
3. Miscellaneous Property in Section	S	T	R		
	S	T	R		

STATE OF MICHIGAN  
COUNTY OF KENT  
RECEIVED FOR RECORD  
96 MAR 20 AM 8:59  
REG. OF DEEDS  
*W. J. Hand*

9090

Register of Deeds Stamp & File Number

- 4. Lot No. \_\_\_\_\_, Recorded Plat \_\_\_\_\_
- 5. Private Claims \_\_\_\_\_



I, Kirk Breitels, in a field survey on Jan. 16, 1996, do hereby certify that under requirements of P.A. 74, Michigan P.A. of 1970, the corner points mentioned in lines 1 and 2 above were in conformance with regulations and rules therefore as required in the current manual of survey instructions of the United States Department of the Interior, Bureau of Land Management or by a decree of a Court of Law and/or that the corner points mentioned in lines 3, 4 and 5 above were in conformance with the rules of the Michigan Board of Professional Surveyors or by a Decree of a Court of Law; established, re-established, monumented, re-monumented, recovered, found as expressed below:

NOTE: Not more than 4 corners, all in the same town and range, may be recorded on this certificate.

A. Description of original monument and accessories and/or subsequent restoration:

I-8	1837	GLO	Whitcomb	Set Post
	1958	Kent Co. Wit.		"+" cut in pavement
	1972	LCRC #351	Spicer	"+" cut in pavement
	1972	Kent Co. Wit.		Mon. Box
	1981	LCRC #2342	Bueche	Set Kent County Monument
	1988	LCRC #4855	Bueche	Kent County Monument

P.A. 345 1990 KENT COUNTY

PEER APPROVED 3/7/96  
CHAIRMAN *John C. Bueche*

The position of this corner was previously approved by the Kent County Remonumentation Peer Group, monumented by John C. Bueche on 11/3/81 and was recorded per LCRC #2342.

B. Description of corner evidence found and/or method applied in restoring or reestablishing corner:

I-8 Found standard Kent Co. Mon. (Harrison) per witnesses from above LCRC as set by John C. Bueche in place of the 1" x 18" Iron he found inside a Mon. Box. Said Iron checks with previous measurements. All witnesses gone.

LCRC #2342			LCRC #4855		
Nail/tag T. Pole	S50°E	69.26'	Nail/tag T. Pole	S50°E	69.26'
Nail/tag T. Pole	S75°W	113.60'	Nail/tag T. Pole	S75°W	114.30'
Nail/tag Fc. Post	N35°W	66.24'	Nail/tag Fc. Post	N35°E	66.48'
NE cor. CB cast.	N30°E	51.83'	NE cor. CB casting	N30°W	51.83'
Face of curb	S00°E	19.45'	Face of curb	S00°E	19.45'
PK Nail in C/L joint	N00°E	6.08'	On C/L bit. N. - C/L E-W Rd. is N. 6'±		

The selected location is accepted by me and is generally accepted by professional surveyors as the best available evidence of the position of the original corner.

C. Description of monument for corner and accessories established to perpetuate locating the position of the corner:

I-8 Standard Kent County Monument		
Nail & KC Remon. tag SW side T. Pole	S50°E	69.43'
Nail & KC Remon. tag N. side T. Pole	S75°W	114.19'
NE cor. CB casting (at back of curb)	N30°W	51.83'
Face of curb	S00°E	19.43'
Set Nail & KC Remon. tag S. side fence post	N45°E	79.43'
On C/L bit. N. - C/L E-W Rd. is N. 6'±		



Signed by *Kirk Breitels*  
Surveyor's Michigan License No. 30077

Date 2/6/96