

FEB 14 1997

KENT COUNTY REMONUMENTATION

COMMISSION

LAND CORNER RECORDATION CERTIFICATE

Filing Requirement of Act 74, Mich. P.A. 1970

For corners in KENT COUNTY (County)

Located In:

Corner Code #

- 1. Public Land Survey T 8N R 11W I-9
2. Property Controlling in Section S T R
3. Miscellaneous Property in Section S T R

- 4. Lot No. , Recorded Plat
5. Private Claims

REG. OF DEEDS

Handwritten signature

96 MAR 20 AM 8:58

STATE OF MICHIGAN COUNTY OF KENT RECEIVED FOR RECORD

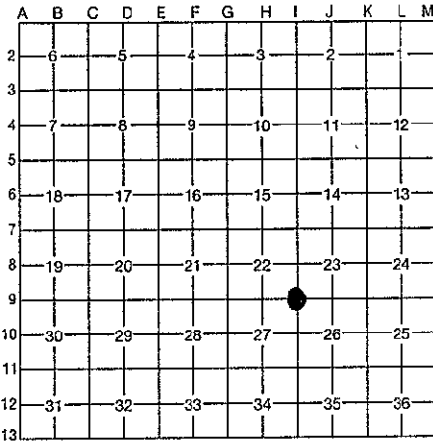
9091

Register of Deeds Stamp & File Number

I, Kirk Breitels, in a field survey on Jan. 15, 1996

do hereby certify that under requirements of P.A. 74, Michigan P.A. of 1970, the corner points mentioned in lines 1 and 2 above were in conformance with regulations and rules therefore as required in the current manual of survey instructions of the United States Department of the Interior, Bureau of Land Management or by a decree of a Court of Law and/or that the corner points mentioned in lines 3, 4 and 5 above were in conformance with the rules of the Michigan Board of Professional Surveyors or by a Decree of a Court of Law; established, re-established, monumented, re-monumented, recovered, found as expressed below:

NOTE: Not more than 4 corners, all in the same town and range, may be recorded on this certificate.



A. Description of original monument and accessories and/or subsequent restoration: P.A. 315 1900 KENT COUNTY

- I-9 1831 GLO Mullet Set Post PEER APPROVED 3/7/96
1981 LCRC #2042 Kent Co. Wit. Iron CHAIRMAN
1982 LCRC #3084 E. Glaza Set 1/2" Rerod from plat information
1988 LCRC #4856 Merdzinski Set Kent County Monument
1991 LCRC #6651 Bueche Kent County Monument
Marschall Kent County Monument

The position of this corner was previously approved by the Kent County Remonumentation Peer Group, monumented by John C. Bueche on 8/5/92 and was recorded per LCRC #3084.

B. Description of corner evidence found and/or method applied in restoring or reestablishing corner:

I-9 Found standard Kent Co. Mon. (Harrison) per witnesses from above LCRC as set by John C. Bueche in place of the 1/2" Rebar he found. Said Rebar checks with LCRC #2042.

- LCRC #4856: Nail/tag 26" Hackberry S05°E 51.38', Nail/tag tri. 8" Maple N15°W 18.18', Nail/tag 7" Basswood S75°W 12.45', Nail/tag dbl. 8" Ash N47°W 34.30', Face of cor. steel fc. post N. 0.92'
LCRC #6651: NW bolt MH cover S11°W 29.81', "X" top 72" culv. S80°W 115.35', Nail/tag 6" Maple N15°W 18.22', Nail/tag 26" Elm S05°E 51.27', C/L hole 4" Well S66°W 119.81', PK Nail 10" Elm N49°W 31.56', Nail/tag 8" Elm S89°W 12.46', Nail/tag 10" Ash N63°W 34.25'

The selected location is accepted by me and is generally accepted by professional surveyors as the best available evidence of the position of the original corner.

C. Description of monument for corner and accessories established to perpetuate locating the position of the corner:

- I-9 Standard Kent County Monument
Set Nail & KC Remon. tag E. side 28" Hackberry S05°E 51.54'
NW bolt MH cover S11°W 30.26'
New Nail & KC Remon. tag E. side Tri. 8" Maple N15°W 18.33'
"X" cut top 72" culv. S80°W 115.45'
Near W. side foundation of large tank N80°E 182.1'
NW corner building foundation S20°E 152.92'



Signed by [Signature]
Surveyor's Michigan License No. 30077

Date 2/6/96