

KENT COUNTY REMONUMENTATION

FEB 14 1997

LAND CORNER RECORDATION CERTIFICATE

COMMISSION Filing Requirement of Act 74, Mich. P.A. 1970

For corners in KENT COUNTY (County)	Located In:	Corner Code #
1. Public Land Survey	T 8N R 11W	J-7
	T R	
	T R	
	T R	
2. Property Controlling in Section	S T R	
	S T R	
3. Miscellaneous Property in Section	S T R	
	S T R	

REG. OF DEEDS

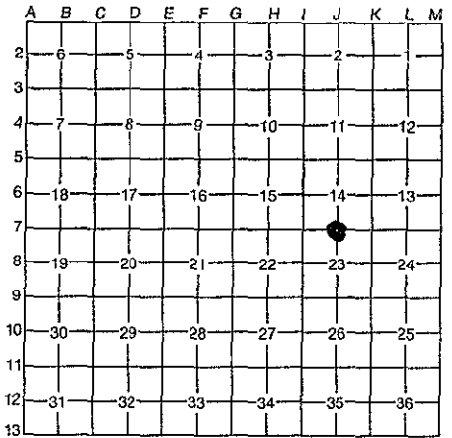
Lucy St. Land

STATE OF MICHIGAN
COUNTY OF KENT
RECEIVED FOR RECORD
96 MAR 20 AM 8:58

9097

Register of Deeds Stamp & File Number

4. Lot No. _____, Recorded Plat _____
5. Private Claims _____



I, Kirk Breitels, in a field survey on Jan. 16, 19 96, do hereby certify that under requirements of P.A. 74, Michigan P.A. of 1970, the corner points mentioned in lines 1 and 2 above were in conformance with regulations and rules therefore as required in the current manual of survey instructions of the United States Department of the Interior, Bureau of Land Management or by a decree of a Court of Law and/or that the corner points mentioned in lines 3, 4 and 5 above were in conformance with the rules of the Michigan Board of Professional Surveyors or by a Decree of a Court of Law; established, re-established, monumented, re-monumented, recovered, found as expressed below:

NOTE: Not more than 4 corners, all in the same town and range, may be recorded on this certificate.

A. Description of original monument and accessories and/or subsequent restoration:

J-7	1837	GLO	Whitcomb	Set Post	P.A. 345 1990 KENT COUNTY
	1955	Kent Co. Wit.		Stone & Iron	PEER APPROVED 3/7/96
	1972	LCRC #129	Chambers	Boat Spike	CHAIRMAN <i>Harry Huber</i>
	1972	LCRC #185	Spicer	Boat Spike	
	1981	LCRC #2571	Bueche	Set Kent County Monument	
	1988	LCRC #4862	Bueche	Kent County Monument	

The position of this corner was previously approved by the Kent County Remonumentation Peer Group, monumented by John C. Bueche on 12/7/81 and was recorded per LCRC #2571.

B. Description of corner evidence found and/or method applied in restoring or reestablishing corner:

J-7 Found standard Kent Co. Mon. (Harrison) per witnesses from above LCRC as set by John C. Bueche in place of the "T" Iron he found. Said "T" Iron checks with Kent Co. Wit. and LCRC's #129 & #185.

LCRC #2571 & #4862

Nail & KC Remon. tag E. side W. Cherry	N15°W	97.97'
Nail & KC Remon. tag S. side P. Pole	S75°E	83.30'
Nail NW side P. Pole	S75°W	79.30'
"X" cut in conc. curb	N70°E	56.75'
NW cor. conc. pad	S30°W	51.50'

On C/L bit. N, C/L E-W bit. is N. 2'±, C/L Manhole East 5.8'

The selected location is accepted by me and is generally accepted by professional surveyors as the best available evidence of the position of the original corner.

C. Description of monument for corner and accessories established to perpetuate locating the position of the corner:

J-7 Standard Kent County Monument		
New Nail & KC Remon. tag E. side 30" W. Cherry	N15°W	97.99'
Nail & KC Remon. tag S. side P. Pole	S75°E	83.27'
Nail NW side P. Pole	S75°W	79.18'
"X" cut in conc. curb	N70°E	56.75'
NW cor. conc. pad	S30°W	51.50'
On C/L bit. N, C/L E-W bit. is N. 2'±		
C/L Manhole - East 5.95'		



Signed by *Kirk Breitels*

Date 2/6/96

Surveyor's Michigan License No. 30077