

SURVEY & REMONUMENTATION

FEB 14 1997

KENT COUNTY REMONUMENTATION

COMMISSION

LAND CORNER RECORDATION CERTIFICATE
Filing Requirement of Act 74, Mich. P.A. 1970

For corners in

KENT COUNTY

(County)

Located In:

Corner Code #

- | | | |
|------------------------------------|--------------------------|------------|
| 1. Public Land Survey | T <u>8N</u> R <u>11W</u> | <u>J-8</u> |
| | T ___ R ___ | _____ |
| | T ___ R ___ | _____ |
| | T ___ R ___ | _____ |
| 2. Property Controlling In Section | S ___ T ___ R ___ | _____ |
| | S ___ T ___ R ___ | _____ |
| 3. Miscellaneous Property in Sec. | S ___ T ___ R ___ | _____ |
| | S ___ T ___ R ___ | _____ |

STATE OF MICHIGAN
 COUNTY OF KENT
 RECEIVED FOR RECORD
 96 OCT 18 AM 8:20
 REG. OF DEEDS
 9403A
 Register of Deeds Stamp & File Number

4. Lot No. _____, Recorded Plat _____
 5. Private Claims _____

I, Kirk Breitels, in a field survey on Oct. 4, 1996 do hereby state that under requirements of P.A. 74, Michigan P.A. of 1970, the corner points mentioned in lines 1 and 2 above were in conformance with regulations and rules therefore as required in the current manual of survey instructions of the United States Department of the Interior, Bureau of Land Management or by a decree of a Court of Law and /or that the corner points mentioned in lines 3, 4 and 5 above were in conformance with the rules of the Michigan Board of Land Surveyors or by a Decree of a Court of Law; established, re-established, monumented, recovered, found as expressed below:

	A	B	C	D	E	F	G	H	I	J	K	L	M
1													
2	6		5		4		3		2		1		
3													
4	7		8		9		10		11		12		
5													
6	18		17		16		15		14		13		
7													
8	19		20		21		22		23		24		
9													
10	30		29		28		27		26		25		
11													
12	31		32		33		34		35		36		
13													

NOTE: Not more than 2 corners, all in the same town and range, may be recorded on this certificate.

A. Description of original monument and accessories and/or subsequent restoration:

- J-8 1837---GLO---Not Set
 1943---Kent Co. Wits.---"X" cut, witnesses given
 1946-68---Williams & Works---Found "X" cut: 1.15' E. of true, 13.5' S. of C/L intersection, 2557.5' to N 1/4, 2713.3' to S 1/4.
 1970's-1980's---Surveys---By Exxel, Williams & Works, Prien & Newhof all run straight N-S 1/4 line.
 1970's-1980's---Surveys---By W & W and J. Spencer along E-W 1/4 line in NW 1/4
 1971---Kent Co. Rd. Comm.---Rd. plans: C 1/4 cor. 109.82' S. of C/L int. (N-S-W)

B. Description of corner evidence found and/or method applied in restoring or reestablishing corner:

J-8 Did not find any "X" cuts, all concrete pavement now overlaid with asphalt or rebuilt. No source can identify the origin of any "X" cuts or how they were placed. Established E-W 1/4 line in the NW 1/4 per Williams & Works and J. Spencer surveys and intersected this line with the true N-S 1/4 line as shown on surveys by Exxel, Williams & Works and Prien & Newhoff for the C 1/4 corner of Sec. 23. This point is 0.0' E. and 0.4' S. from intersection of 1/4 lines and 101.2' S. of intersection of current road C/L (N-S-W). This point is 1'± W. of N-S C/L Northland Dr. and 2'± N. of N. edge of bridge over the Grand River.

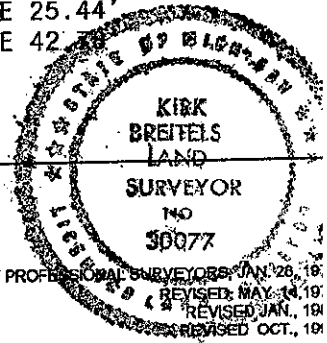
The location as described is accepted by me and is generally accepted by professional surveyors as the best available evidence of the position of the corner.

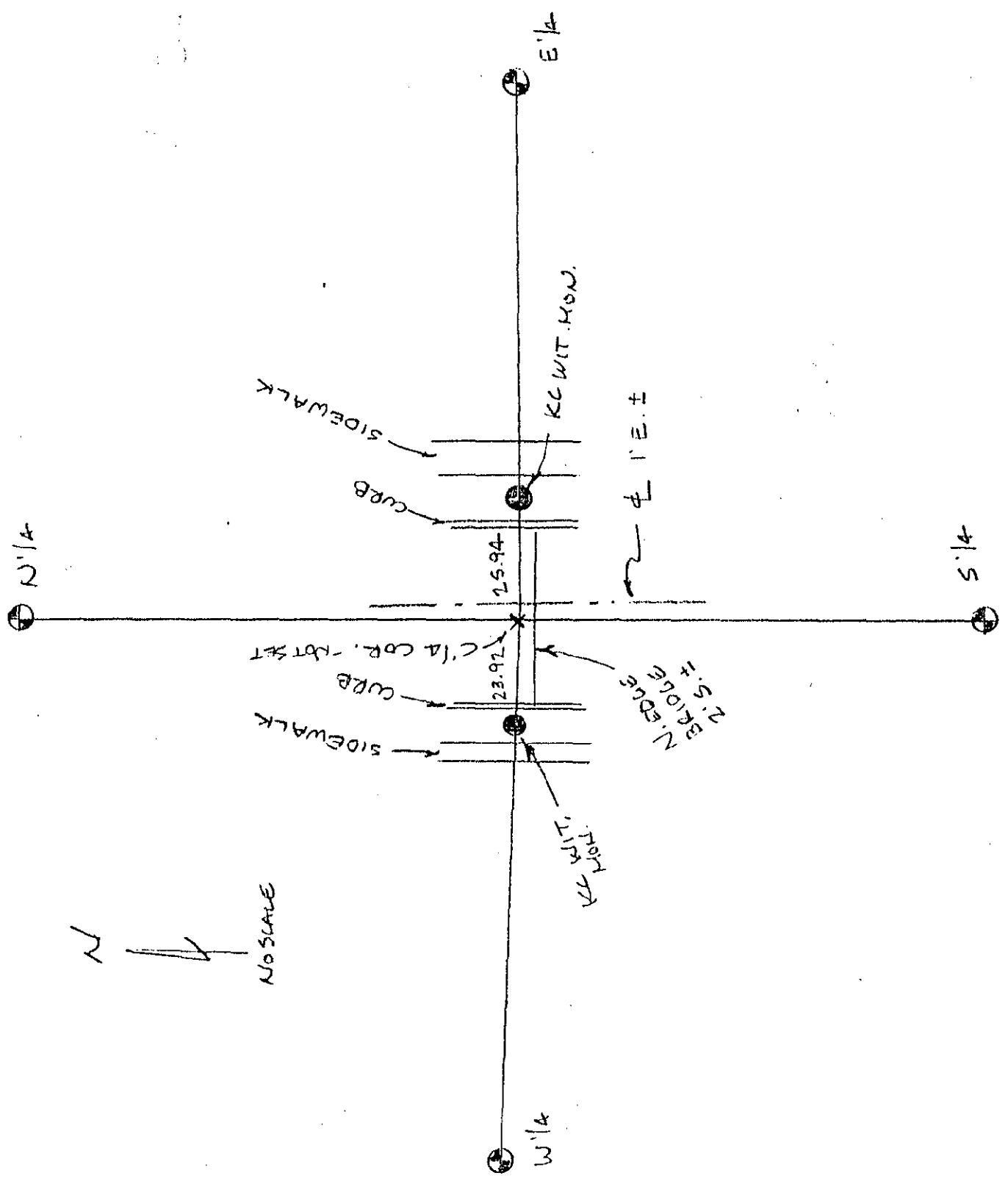
C. Description of monument for corner and accessories established to perpetuate locating the position of the corner:

- J-8 Set Standard Kent Co. Witness Monuments 23.92' West (on E-W 1/4 line) and 25.94' East (on E-W 1/4 line) of the C 1/4 corner of Sec. 23. See sketch over.
- | | | | |
|-----------------------|--------------|-----------------------|--------------|
| <u>West Monument</u> | | <u>East Monument</u> | |
| SW cor. CB header | N00°W 32.98' | SW cor. CB header | N55°W 60.53' |
| SW cor. drain grate | S05°E 30.87' | SW cor. drain grate | S55°W 56.86' |
| SE cor. drain grate | S55°E 56.91' | SE cor. drain grate | S05°W 31.00' |
| C/L W. bolt sign base | N65°E 61.04' | C/L W. bolt sign base | N15°E 25.44' |
| SE cor. CB header | N55°E 69.44' | SE cor. CB header | N05°E 42.77' |

Signed by Kirk Breitels
 Surveyor's Michigan License No. 30077

Date 10/11/96





**SURVEY &
REMONUMENTATION**

FEB 14 1997

COMMISSION