

FEB 14 1997

KENT COUNTY REMONUMENTATION

COMMISSION

LAND CORNER RECORDATION CERTIFICATE
Filing Requirement of Act 74, Mich. P.A. 1970

For corners in
KENT COUNTY
(County)

Located In:

Corner Code #

1. Public Land Survey	T	<u>8N</u>	R	<u>11W</u>	<u>J-11</u>
	T		R		
	T		R		
	T		R		
2. Property Controlling in Section	S		T	R	
	S		T	R	
3. Miscellaneous	S		T	R	
Property in Section	S		T	R	

REG. OF DEEDS

Handwritten signature

STATE OF MICHIGAN
COUNTY OF KENT
RECEIVED FOR RECORD
96 MAR 20 AM 8:58

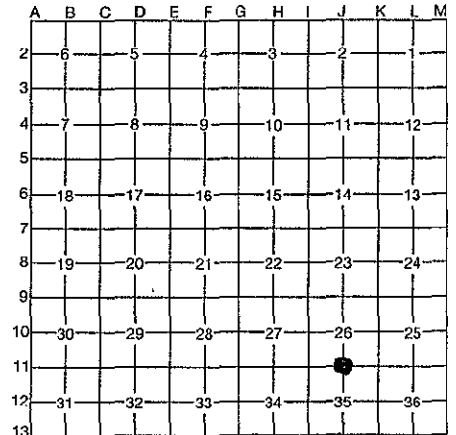
9099

Register of Deeds Stamp & File Number

- 4. Lot No. _____, Recorded Plat _____
- 5. Private Claims _____

I, Kirk Breitels, in a field survey on Jan. 15, 19 96, do hereby certify that under requirements of P.A. 74, Michigan P.A. of 1970, the corner points mentioned in lines 1 and 2 above were in conformance with regulations and rules therefore as required in the current manual of survey instructions of the United States Department of the Interior, Bureau of Land Management or by a decree of a Court of Law and/or that the corner points mentioned in lines 3, 4 and 5 above were in conformance with the rules of the Michigan Board of Professional Surveyors or by a Decree of a Court of Law; established, re-established, monumented, re-monumented, recovered, found as expressed below:

NOTE: Not more than 4 corners, all in the same town and range, may be recorded on this certificate.



P.A. 345 1990 KENT COUNTY

PEER APPROVED 3/7/96
CHAIRMAN Harry Huber

A. Description of original monument and accessories and/or subsequent restoration:

J-11	1831	GLO	Mullet	Set Post
	1974	Kent Co. Wit.		1" Steel Rod with ball on top
	1981	LCRC #609	Bonnema	1" Steel Rod
	1988	LCRC #2382	Bueche	Set Kent County Monument
	1992	LCRC #4864	Bueche	Kent County Monument
		LCRC #6653	W. Glaza	Set Kent County Monument after const.

The position of this corner was previously approved by the Kent County Remonumentation Peer Group, monumented by John C. Bueche on 11/16/81 and was recorded per LCRC #2382.

B. Description of corner evidence found and/or method applied in restoring or reestablishing corner:

J-11 Found standard Kent Co. Mon. (Harrison) per witnesses from above LCRC as set by Wallace E. Glaza at the same location as set by John C. Bueche in place of the Steel Rod and Leaded Stone he found. Both Steel Rod & Leaded Stone check with Kent Co. Wit. and LCRC #609.

LCRC #6653

C/L top of hydrant	N59°E	45.48'	All witnesses from
Spike in NE side triple tree	S48°E	79.30'	LCRC's #2382 & #4864
Nail in NE side P. Pole	N29°W	68.21'	were removed during
Nail in S. side P. Pole	N84°W	241.92'	road construction

In centerline of East-West Road

The selected location is accepted by me and is generally accepted by professional surveyors as the best available evidence of the position of the original corner.

C. Description of monument for corner and accessories established to perpetuate locating the position of the corner:

J-11 Standard Kent County Monument			
C/L top of hydrant	N59°E	45.48'	
Spike in NE side triple tree	S48°E	79.30'	
Nail in NE side P. Pole	N29°W	68.20'	
Nail in S. side P. Pole	N84°W	241.96'	
NW cor. garage foundation	S55°W	120.69'	
C/L Manhole	S05°W	22.91'	
In centerline of East-West Road			



Signed by *Kirk Breitels*
Surveyor's Michigan License No. 30077

Date 2/6/96