

FEB 14 1997

KENT COUNTY REMONUMENTATION

COMMISSION

LAND CORNER RECORDATION CERTIFICATE
Filing Requirement of Act 74, Mich. P.A. 1970

For corners in
KENT COUNTY
(County)

Located In:

Corner Code #

1. Public Land Survey	T	8N	R	11W	K-4
	T		R		
	T		R		
	T		R		
2. Property Controlling in Section	S		T		
	S		T		
3. Miscellaneous Property in Section	S		T		
	S		T		

REG. OF DEEDS

Lucy Stand

96 MAR 20 AM 8:59

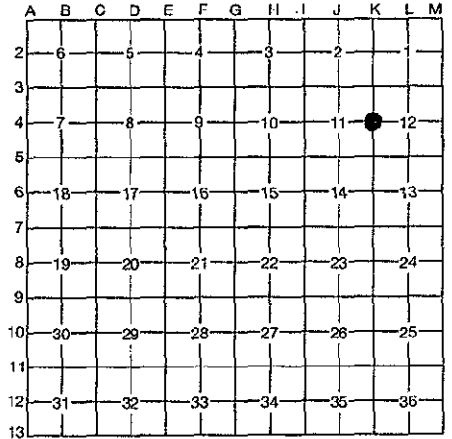
STATE OF MICHIGAN
COUNTY OF KENT
RECEIVED FOR RECORD

9104

Register of Deeds Stamp & File Number

- 4. Lot No. _____, Recorded Plat _____
- 5. Private Claims _____

I, Kirk Breitels, in a field survey on Jan. 29, 1996, do hereby certify that under requirements of P.A. 74, Michigan P.A. of 1970, the corner points mentioned in lines 1 and 2 above were in conformance with regulations and rules therefore as required in the current manual of survey instructions of the United States Department of the Interior, Bureau of Land Management or by a decree of a Court of Law and/or that the corner points mentioned in lines 3, 4 and 5 above were in conformance with the rules of the Michigan Board of Professional Surveyors or by a Decree of a Court of Law; established, re-established, monumented, re-monumented, recovered, found as expressed below:



NOTE: Not more than 4 corners, all in the same town and range, may be recorded on this certificate.

A. Description of original monument and accessories and/or subsequent restoration:

K-4	1837	GLO	Whitcomb	Set Post	1964	Kent Co. Wit. Mon. Box
	1972	LCRC #168		Bonnema		3/4" Iron in mon. box
	1972	LCRC #196		Spicer		1" Iron in mon. box
	1972	LCRC #287		VanKooten		3/4" Iron in mon. box
	1981	LCRC #2279		Bueche		Set Kent County Monument in mon. box
	1988	LCRC #4867		Bueche		Kent County Monument
	1995	LCRC #8677		Breitels		Reset Kent County Monument

The position of this corner was previously approved by the Kent County Remonumentation Peer Group, monumented by John C. Bueche on 10/3/81 and was recorded per LCRC #2279.

B. Description of corner evidence found and/or method applied in restoring or reestablishing corner:

K-4 Found standard Kent Co. Mon. (Harrison) per witnesses from above LCRC as set in 1995 by Kirk Breitels in the same location as set in 1981 by John C. Bueche in place of the 1" Iron he found inside a Mon. Box. Said Iron checks with Kent Co. Wit. and LCRC's #168, #196 & #287.

LCRC #2279 & 8677

SW corner house foundation	N30°E	80.95'
NE corner brick building	S40°W	127.35'
Nail & KC Remon. tag SW side P. Pole	N65°W	44.50'
Nail & KC Remon. tag N. side 30" Maple	S70°W	126.53'
Face of W. fence post of outfield fence	S50°E	155.08'

P.A. 345 1990 KENT COUNTY

PEER APPROVED 3/7/96

CHAIRMAN *Harry Stubbs*

The selected location is accepted by me and is generally accepted by professional surveyors as the best available evidence of the position of the corner.

C. Description of monument for corner and accessories established to perpetuate locating the position of the corner:

K-4 Standard Kent County Monument

SW corner house foundation	N30°E	80.99'
NE corner brick building	S40°W	127.29'
Nail & KC Remon. tag SW side P. Pole	N65°W	44.68'
Nail & KC Remon. tag N. side 36" Maple	S70°W	126.59'
Face of W. fence post of outfield fence	S50°E	155.08'



Signed by *Kirk Breitels*

Date 2/16/96

Surveyor's Michigan License No. 30077