

FEB 14 1997

COMMISSION

**KENT COUNTY REMONUMENTATION  
LAND CORNER RECORDATION CERTIFICATE**  
Filing Requirement of Act 74, Mich. P.A. 1970

For corners in  
**KENT COUNTY**  
(County)

Located In: Corner Code #

|                                    |            |     |
|------------------------------------|------------|-----|
| 1. Public Land Survey              | T 8N R 11W | K-5 |
|                                    | T R        |     |
|                                    | T R        |     |
|                                    | T R        |     |
| 2. Property Controlling in Section | S T R      |     |
|                                    | S T R      |     |
| 3. Miscellaneous Property in Sec.  | S T R      |     |
|                                    | S T R      |     |

STATE OF MICHIGAN  
COUNTY OF KENT  
RECEIVED FOR RECORD

96 JUN -7 AM 8:29

REG. OF DEEDS

*Handwritten Signature*

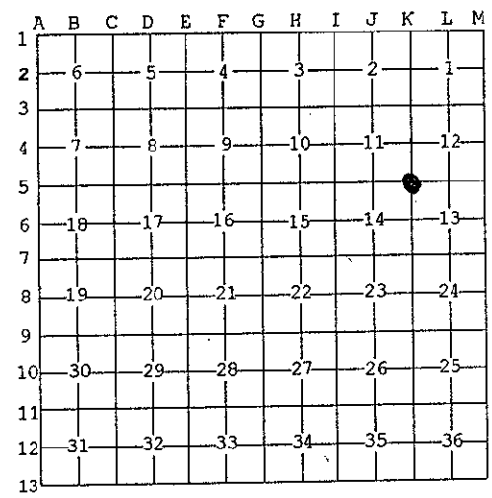
**9193**

Register of Deeds Stamp & File Number

4. Lot No. \_\_\_\_\_, Recorded Plat \_\_\_\_\_  
5. Private Claims \_\_\_\_\_

Kirk Breitels, in a field survey on Apr. 19, 1996 do hereby state that under requirements of P.A. 74, Michigan P.A. of 1970, the corner points mentioned in lines 1 and 2 above were in conformance with regulations and rules therefore as required in the current manual of survey instructions of the United States Department of the Interior, Bureau of Land Management or by a decree of a Court of Law and/or that the corner points mentioned in lines 3, 4 and 5 above were in conformance with the rules of the Michigan Board of Land Surveyors or by a Decree of a Court of Law; established, re-established, monumented, recovered, found as expressed below:

NOTE: Not more than 2 corners, all in the same town and range, may be recorded on this certificate.



A. Description of original monument and accessories and/or subsequent restoration:

|     |      |               |           |                          |
|-----|------|---------------|-----------|--------------------------|
| K-5 | 1837 | GLO           | Whitcomb  | Set Post                 |
|     | 1963 | Kent Co. Wit. |           | Iron                     |
|     | 1972 | LCRC #168     | Bonnema   | Bolt Spike               |
|     | 1972 | LCRC #287     | VanKooten | Bolt Spike               |
|     | 1981 | LCRC #2280    | Bueche    | Set Kent County Monument |
|     | 1988 | LCRC #4868    | Bueche    | Kent County Monument     |

P.A. 345 1990 KENT COUNTY  
PEER APPROVED 5/30/96  
CHAIRMAN *Handwritten Signature*

The position of this corner was previously approved by the Kent County Remonumentation Peer Group, monumented by John C. Bueche on 10/3/81 and was recorded per LCRC #2280

B. Description of corner evidence found and/or method applied in restoring or reestablishing corner:  
K-5 Found standard Kent Co. Mon. (Harrison) per witnesses from above LCRC as set by John C. Bueche in place of the Bolt Spike over a 1" Iron he found. Both Bolt Spike and Iron check with Kent Co. Wit. and LCRC's #168 & #287.

|                   |                     |       |         |                   |                     |       |         |
|-------------------|---------------------|-------|---------|-------------------|---------------------|-------|---------|
| <u>LCRC #2280</u> | Nail/tag P & T Pole | S63°W | 49.22'  | <u>LCRC #4868</u> | Nail/tag P & T Pole | S63°W | 49.22'  |
|                   | NW cor. hse. fnd.   | S35°E | 120.65' |                   | NW cor. hse. fnd.   | S35°E | 120.65' |
|                   | SE cor. hse. fnd.   | N60°E | 123.65' |                   | SE cor. hse. fnd.   | N60°E | 123.65' |
|                   | NW cor. garage      | N35°E | 162.15' |                   | NW cor. garage      | N35°E | 151.88' |
|                   |                     |       |         |                   | SE cor. gar. fnd.   | N46°W | 99.34'  |

The selected location is accepted by me and is generally accepted by professional surveyors as the best available evidence of the position of the original corner.

C. Description of monument for corner and accessories established to perpetuate locating the position of the corner:

|   |               |
|---|---------------|
| K-5 Standard Kent County Monument           |               |
| NW corner house foundation                  | S35°E 120.65' |
| SE corner house foundation                  | N60°E 123.65' |
| NW corner of garage                         | N35°E 151.88' |
| SE corner garage foundation                 | N46°W 99.34'  |
| Set Nail & KC Remon. tag NW side Util. Pole | S60°W 51.64'  |



Signed by *Handwritten Signature*  
Surveyor's Michigan License No. 30077

Date 4/26/96