

FEB 14 1997

KENT COUNTY REMONUMENTATION

COMMISSION

LAND CORNER RECORDATION CERTIFICATE

Filing Requirement of Act 74, Mich. P.A. 1970

For corners in KENT COUNTY (County)

Located In:

Corner Code #

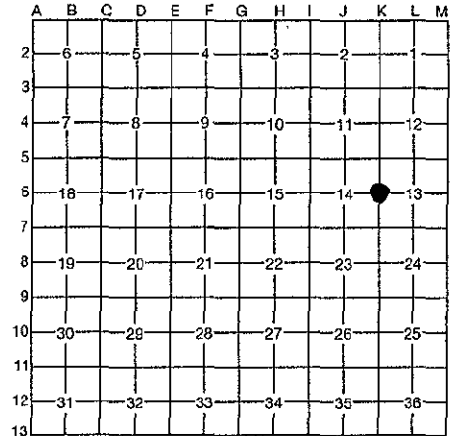
Table with 4 columns: Item description, Located In (T, R, S), Corner Code #, and a blank column for recording.

STATE OF MICHIGAN COUNTY OF KENT RECEIVED FOR RECORD 96 MAR 20 AM 8:59 REG. OF DEEDS

9105

Register of Deeds Stamp & File Number

- 4. Lot No. , Recorded Plat
5. Private Claims



I, Kirk Breitels, in a field survey on Jan. 16, 1996

do hereby certify that under requirements of P.A. 74, Michigan P.A. of 1970, the corner points mentioned in lines 1 and 2 above were in conformance with regulations and rules therefore as required in the current manual of survey instructions of the United States Department of the Interior, Bureau of Land Management or by a decree of a Court of Law and/or that the corner points mentioned in lines 3, 4 and 5 above were in conformance with the rules of the Michigan Board of Professional Surveyors or by a Decree of a Court of Law; established, re-established, monumented, re-monumented, recovered, found as expressed below:

NOTE: Not more than 4 corners, all in the same town and range, may be recorded on this certificate.

A. Description of original monument and accessories and/or subsequent restoration:

Table with 4 columns: Corner Code #, Year, Description, and Monument Type.

The position of this corner was previously approved by the Kent County Remonumentation Peer Group, monumented by John C. Bueche on 11/18/81 and was recorded per LCRC #2381.

B. Description of corner evidence found and/or method applied in restoring or reestablishing corner:

K-6 Found standard Kent Co. Mon. (Harrison) per witnesses from above LCRC as set by John C. Bueche in place of the 1/2" x 24" Solid Iron he found. Said Iron checks with Kent Co. Wit. and LCRC #580.

LCRC #2381 & #4869

Table with 4 columns: Description, Bearing, Distance, and Monument Type.

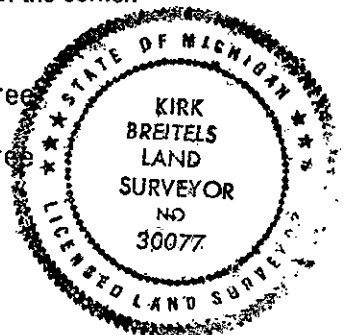
P.A. 345 1990 KENT COUNTY PEER APPROVED 3/7/96 CHAIRMAN

Mon. at S. end of stone wall running N. The selected location is accepted by me and is generally accepted by professional surveyors as the best available evidence of the position of the original corner.

C. Description of monument for corner and accessories established to perpetuate locating the position of the corner:

K-6 Standard Kent County Monument

Table with 4 columns: Description, Bearing, Distance, and Monument Type.



Signed by [Signature] 30077 Surveyor's Michigan License No.

Date 2/16/96