

SURVEY & REMONUMENTATION

KENT COUNTY REMONUMENTATION

FEB 14 1997

LAND CORNER RECORDATION CERTIFICATE
Filing Requirement of Act 74, Mich. P.A. 1970

COMMISSION

For corners in
KENT COUNTY
 (County)

Located In:

Corner Code #

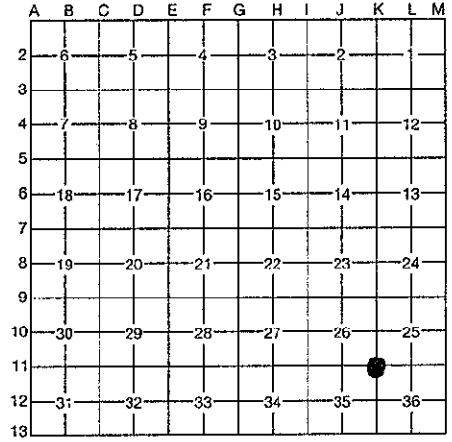
1. Public Land Survey	T	8N	R	11W	K-11
	T		R		
	T		R		
	T		R		
2. Property Controlling in Section	S	T	R		
	S	T	R		
3. Miscellaneous Property in Section	S	T	R		
	S	T	R		

REG. OF DEEDS
 96 MAR 20 AM 8:59
 STATE OF MICHIGAN
 COUNTY OF KENT
 RECEIVED FOR RECORD

9113

Register of Deeds Stamp & File Number

4. Lot No. _____, Recorded Plat _____
5. Private Claims _____



I, Kirk Breitels, in a field survey on Jan. 15, 1996, do hereby certify that under requirements of P.A. 74, Michigan P.A. of 1970, the corner points mentioned in lines 1 and 2 above were in conformance with regulations and rules therefore as required in the current manual of survey instructions of the United States Department of the Interior, Bureau of Land Management or by a decree of a Court of Law and/or that the corner points mentioned in lines 3, 4 and 5 above were in conformance with the rules of the Michigan Board of Professional Surveyors or by a Decree of a Court of Law; established, re-established, monumented, re-monumented, recovered, found as expressed below:

NOTE: Not more than 4 corners, all in the same town and range, may be recorded on this certificate.

A. Description of original monument and accessories and/or subsequent restoration:

K-11	1831	GLO	Mullet	Set Post	P.A. 345 1990 KENT COUNTY
	1951	Kent Co. Wit.		Concrete Monument	PEER APPROVED 2/7/96
	1976	LCRC #946	Bonnema	Concrete Monument	CHAIRMAN <i>Harry Huber</i>
	1981	LCRC #2378	Bueche	Set Kent County Monument	
	1988	LCRC #	Bueche	Kent County Monument	

The position of this corner was previously approved by the Kent County Remonumentation Peer Group, monumented by John C. Bueche on 11/16/81 and was recorded per LCRC #2378.

B. Description of corner evidence found and/or method applied in restoring or reestablishing corner:

K-11 Found standard Kent Co. Mon. (Harrison) per witnesses from above LCRC as set by John C. Bueche in place of the Concrete Monument he found. Said Concrete Monument checks with Kent Co. Wit. & LCRC #946.

- LCRC #2378 & #4873
- Nail & KC Remon. tag W. side 28" Oak S00°W 66.38'
 - Nail & KC Remon. tag S. side 34" Oak N75°E 72.67'
 - Nail & KC Remon. tag NW side 26" Oak N60°E 34.94'
 - Nail & KC Remon. tag S. side dbl. 42" Oak N70°W 53.60'
 - Iron is N. 33.00', Leaded Stone S00°W 33.0'
 - Fence corner N85°E 2.98' to face, fence to E. & S.

The selected location is accepted by me and is generally accepted by professional surveyors as the best available evidence of the position of the original corner.

C. Description of monument for corner and accessories established to perpetuate locating the position of the corner:

- K-11 Standard Kent County Monument
- New Nail & KC Remon. tag W. side Tw. 18" Oak S00°W 66.38'
 - New Nail & KC Remon. tag S. side 40" Oak N75°E 72.67'
 - Set Nail & KC Remon. tag NW side 30" Oak N60°E 35.02'
 - Set Nail & KC Remon. tag S. side dbl. 42" Oak N70°W 53.70'
 - Capped Iron (Exxel) N00°E 33.00'
 - Face of bent fence corner for fence to S. & E. is East 3.5'±



Signed by *Kirk Breitels*

Date 2/6/96

Surveyor's Michigan License No. 30077