

**SURVEY & REMONUMENTATION**

**KENT COUNTY REMONUMENTATION**

FEB 14 1997

**LAND CORNER RECORDATION CERTIFICATE**  
Filing Requirement of Act 74, Mich. P.A. 1970

For corners in

**KENT COUNTY**  
(County)

COMMISSIONER

Located In:

Corner Code #

1. Public Land Survey

T8N	R11W	M-5
T8N	R10W	A-5
T	R	
T	R	
S	T	R
S	T	R
S	T	R
S	T	R

2. Property Controlling in Section

S	T	R
S	T	R
S	T	R
S	T	R

3. Miscellaneous Property in Sec.

S	T	R
S	T	R
S	T	R
S	T	R

4. Lot No. \_\_\_\_\_, Recorded Plat \_\_\_\_\_

5. Private Claims \_\_\_\_\_

STATE OF MICHIGAN  
COUNTY OF KENT  
RECEIVED FOR RECORD  
96 MAR 20 AM 8:59  
REG. OF DEEDS  
*Handwritten Signature*  
**9122**  
Register of Deeds Stamp & File Number

I, Kirk Breitels, in a field survey on Jan. 22, 1996 do hereby state that under requirements of P.A. 74, Michigan P.A. of 1970, the corner points mentioned in lines 1 and 2 above were in conformance with regulations and rules therefore as required in the current manual of survey instructions of the United States Department of the Interior, Bureau of Land Management or by a decree of a Court of Law and/or that the corner points mentioned in lines 3, 4 and 5 above were in conformance with the rules of the Michigan Board of Land Surveyors or by a Decree of a Court of Law, established, re-established, monumented, recovered, found as expressed below:

NOTE: Not more than 2 corners, all in the same town and range, may be recorded on this certificate.

1	A	B	C	D	E	F	G	H	I	J	K	L	M
2		6		5		4		3		2		1	
3													
4		7		8		9		10		11		12	
5													
6		18		17		16		15		14		13	
7													
8		19		20		21		22		23		24	
9													
10		30		29		28		27		26		25	
11													
12		31		32		33		34		35		36	
13													

A. Description of original monument and accessories and/or subsequent restoration:

M-5	1837	GLO	Brookfield	Set Post
	1963	Kent Co. Wit.		Mon. Box
	1972	LCRC #355	Spicer	3/4" Iron un Mon. Box
	1981	LCRC #1977	Jonker	Set Kent County Monument in Mon. Box
	1988	LCRC #4885	Bueche	Kent County Monument

P.A. 345 1990 KENT COUNTY

PEER APPROVED 3/7/96  
CHAIRMAN Harry Huber  
Set Kent County Monument in Mon. Box

The position of this corner was previously approved by the Kent County Remonumentation Peer Group, monumented by Robert J. Jonker on 8/20/81 and was recorded per LCRC #1977.

B. Description of corner evidence found and/or method applied in restoring or reestablishing corner:

M-5 Found standard Kent Co. Mon. (Harrison) per witnesses from above LCRC as set by Robert J. Jonker in place of the 3/4" Round Iron he found inside a Mon. Box. Said Iron checks with Kent Co. Wit. and LCRC #355.

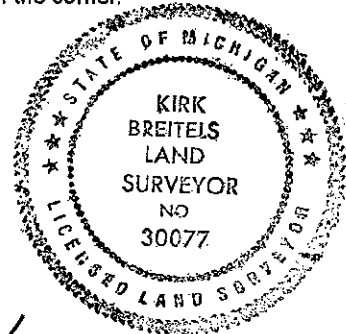
<u>LCRC #1977</u>	<u>LCRC #4885</u>
Nail/tag 40" Maple N30°W 77.87'	Nail/tag 44" Maple N30°W 77.87'
Nail/tag t. Pole S15°E 79.73'	Nail/tag T. Pole S15°E 79.73'
Nail/tag P. Pole S74°E 77.28'	Nail/tag P. Pole S75°E 83.02'
Nail/tag P. Pole S81°W 124.80'	Nail/tag P. Pole S80°W 127.20'
SE cor. hse. fnd. N20°W 125.13'	SE cor. hse. fnd. N20°W 125.13'

The selected location is accepted by me and is generally accepted by professional surveyors as the best available evidence of the position of the original corner.

C. Description of monument for corner and accessories established to perpetuate locating the position of the corner.

M-5 Standard Kent County Monument

New Nail & KC Remon. tag W. side 44" Maple	N30°W	77.87'
Nail & KC Remon. tag E. side T. Pole	S15°E	79.79'
New Nail & KC Remon. tag N. side P. Pole	S75°E	82.74'
Set Nail & KC Remon. tag S. side P. Pole	S80°W	128.18'
SE corner house foundation	N20°W	125.13'
C/L "X" bit. road E-W is N. 2'±		



Signed by Kirk Breitels  
Surveyor's Michigan License No. 30077

Date 2/6/96