

SEP 18 1995

KENT COUNTY REMONUMENTATION

LAND CORNER RECORDATION CERTIFICATE

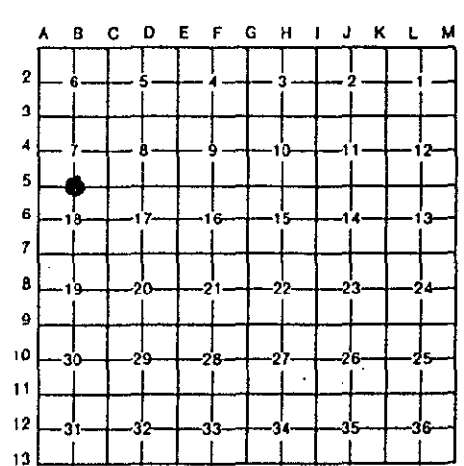
Filing Requirement of Act 74, Mich. P.A. 1970

For corners in KENT COUNTY

(County)	Located In:	Corner Code #
1. Public Land Survey	T 8N R 12W	B-5
	T R	
	T R	
	T R	
2. Property Controlling in Section	S T R	
	S T R	
3. Miscellaneous Property in Sec.	S T R	
	S T R	
4. Lot No. _____, Recorded Plat _____		
5. Private Claims _____		

STATE OF MICHIGAN
 BOARD OF LAND SURVEYORS
 RECEIVED FOR RECORD
 95 JUN 29 AM 11:51
 REG. OF DEEDS
 8429

Register of Deeds Stamp & File Number



I, Kirk Breitels, in a field survey on Feb. 7, 19 95, do hereby certify that under requirements of P.A. 74, Michigan P.A. of 1970, the corner points mentioned in lines 1 and 2 above were in conformance with regulations and rules therefore as required in the current manual of survey instructions of the United States Department of the Interior, Bureau of Land Management or by a decree of a Court of Law and/or that the corner points mentioned in lines 3, 4 and 5 above were in conformance with the rules of the Michigan Board of Land Surveyors or by a Decree of a Court of Law; established, re-established, monumented, re-monumented, recovered, found as expressed below:

NOTE: Not more than 4 corners, all in the same town and range, may be recorded on this certificate.

A. Description of original monument and accessories and/or subsequent restoration:

B-5	1838	GLO	Whitcomb	Set Post
	1961	Kent Co. Wit.		Conc. Mon.
	1985	LCRC #4208	Meyer	Boat Spike
	1985	LCRC #4322	Bueche	Set Kent County Monument

The position of this corner was previously approved by the Kent County Remonumentation Peer Group, monumented by John C. Bueche on 11/29/85 and was recorded per LCRC #4322.

B. Description of corner evidence found and/or method applied in restoring or reestablishing corner:

B-5 Found standard Kent Co. Mon. (Harrison) per witnesses from above LCRC as set by John C. Bueche in place of the Boat Spike he found over a conc. mon. Both Boat Spike and conc. mon. checks with Kent Co. Wit. and LCRC #4208.

LCRC #4322

KC Remon. tag & nail NW side P. Pole	S45°W	71.63'
"X" cut S. end conc. culv.	S15°W	90.41'
C/L NE side 4" Apple	N40°W	54.93'
C/L street sign post	N40°E	43.20'
C/L stop sign post	S35°E	49.78'
on centerline of blacktop N-S, E-W		

P.A. 345 1990 KENT COUNTY

PEER APPROVED 6/22/95
 CHAIRMAN John C. Bueche

The selected location is accepted by me and is generally accepted by professional surveyors as the best available evidence of the position of the original corner.

C. Description of monument for corner and accessories established to perpetuate locating the position of the corner:

B-5 Standard Kent County Monument		
Set KC Remon. tag & nail NW side P. Pole	S45°W	71.42' (different pole)
"X" cut S. end conc. culv.	S15°W	90.41'
C/L stop sign post	S35°E	49.90'
Set KC Remon. tag & nail E. side P. Pole	N20°W	158.74'
Set KC Remon. tag & nail N. side P. Pole	S75°E	194.40'
on centerline of blacktop N-S, E-W		



Signed by Kirk Breitels

Date 6/22/95

Surveyor's Michigan License No. 30077